

General Notes:	
1. REFER TO SHEET ON.1 FOR GENERAL NOTES.	
Key Notes:	
401A	TO SWITCH OR LIGHT ABOVE
401B	PRE-FABRICATED FIREPLACE INSERT - SEE DETAIL F-025-38 FOR SURROUND
401C	SEE DETAIL G/7.01 FOR KITCHEN ISLAND COUNTERTOP DIMENSIONS
401D	HOLD OUTLET HIGH ON ISLAND
401E	OUTLET FOR RANGE HOOD/MICROWAVE HELD HIGH - VENT TO EXTERIOR
401F	SWITCH FOR DISPOSAL LOCATED IN SINK CABINET
401G	(2) 30" CABS ABOVE WAHSER/DRYER
401H	LOCATE WASHER TO LEFT OF DRYER
401J	22-1/2" x 32" ATTIC ACCESS PANEL IN CEILING
401K	BENCH w/ CUBBIES RE: G/D2.2 - INSTALLED BY TRIM CARPENTER
401M	BOX FOR ELECTRICAL FIXTURE - REFERENCE DETAIL F/D2.3
401P	DEDICATED CIRCUIT FOR TANKLESS WATER HEATER

MECHANICAL LEGEND		
◀ DATA JACK	⊗ CLG. MOUNTED LIGHT FIXT.	■ STAIR LIGHT
⊕ WALL OUTLET	○ SURFACE MOUNT DISC LIGHT OR RECESSED CEILING LIGHT, PER SPECS.	+ HOSE BIB
⊕ WEATHERPROOF GFCI OUTLET	○ WALL MOUNTED LIGHT FIXT.	△ SHOWER HEAD
⊕ 220 VOLT OUTLET	⊕ DOUBLE SPOTLIGHT FIXT.	⊕ GAS GAS HOOK UP
⊕ GFCI OUTLET	⊕ DIRECTIONAL CAN LIGHT	⊕ FLOOR DRAIN
⊕ FLOOR OUTLET	⊕ PIN LIGHT	⊕ SMOKE DETECTOR
⊕ CABLE TELEVISION JACK	⊕ WALL SCONCE @ 5'-6" A.F.F.	⊕ SMOKE DETECTOR/CO DETECTOR COMBINATION
⊕ SINGLE POLE SWITCH	⊕ FLUORESCENT LIGHT	⊕ EXHAUST FAN AND LIGHT COMBINATION
⊕ 3-WAY SWITCH	⊕ UNDER CABINET LIGHTING	⊕ CLG. MTD. EXHAUST FAN
⊕ 4-WAY SWITCH		
⊕ BLOCK, MOUNT, & SWITCH FOR FUTURE FAN/LIGHT COMBINATION (CENTER, UNLESS OTHERWISE NOTED)		

Space for Architect Seal

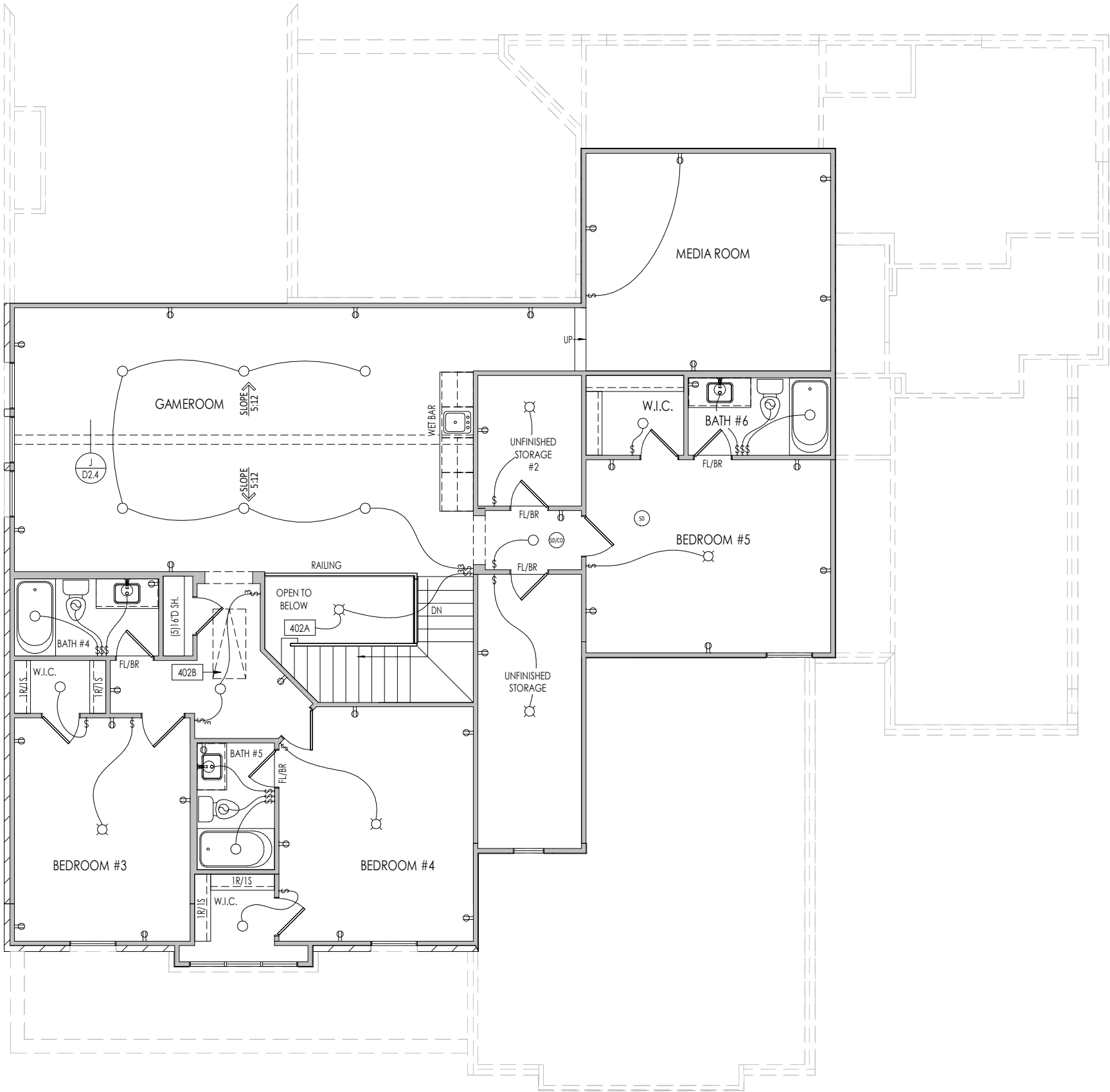
RESIDENCE FOR: <b>MARKET HOME</b> 4621 GENEVIEVE LEIGH DRIVE ANNECY - 85'			
Job Number: <b>ANN8-0156-00</b>	Drawing Date: <b>03/30/2023</b>	Coord Name: <b>GREG P.</b>	Coord Phone: <b>COORD_PHONE</b>
House Name: <b>the BELTERRA</b>			Contract Drawn By: <b>MSA</b>
			Series: <b>ESTATE</b>
Born on Date: <b>XX/XX/XX</b>			Plan No.: <b>WAB</b>



Copyright © 2022 ( 2021 ) The Drees Company. All Rights Reserved.  
8521 Six Forks Road, Suite 500, Raleigh, NC. 27615  
Phone: (919) 844-9288

Sheet Information

**4.01**  
First Floor Mechanical Plan  
Elevation "E"



General Notes:

1. REFER TO SHEET ON.1 FOR GENERAL NOTES.

Key Notes:

402A

TO SWITCH OR LIGHT BELOW

402B

25'-1/5" x 54" PULL DOWN ATTIC ACCESS, ADD (2) SHEETS 3/4" PLYWOOD FOR HVAC, KEYLESS LIGHT AND ELECTRIC OUTLET

MECHANICAL LEGEND

◀ DATA JACK

⊖ WALL OUTLET

⊖ WEATHERPROOF GFCI OUTLET

⊖ 220 VOLT OUTLET

⊖ GFCI OUTLET

⊖ FLOOR OUTLET

TV CABLE TELEVISION JACK

↔ SINGLE POLE SWITCH

↔ 3-WAY SWITCH

↔ 4-WAY SWITCH

Ⓜ BLOCK, MOUNT, & SWITCH FOR FUTURE FAN/LIGHT COMBINATION (CENTER, UNLESS OTHERWISE NOTED)

⊘ CLG. MOUNTED LIGHT FIXT.

○ SURFACE MOUNT DISC LIGHT OR RECESSED CEILING LIGHT, PER SPECS.

⊖ WALL MOUNTED LIGHT FIXT.

⊖ DOUBLE SPOTLIGHT FIXT.

⊖ DIRECTIONAL CAN LIGHT

⊖ PIN LIGHT

⊖ WALL SCONCE @ 5'-6" A.F.F.

⊖ FLUORESCENT LIGHT

⊖ UNDER CABINET LIGHTING

■ STAIR LIGHT

⊕ HOSE BIB

△ SHOWER HEAD

⊖ GAS GAS HOOK UP

⊖ FLOOR DRAIN

Ⓜ SMOKE DETECTOR

Ⓜ SMOKE DETECTOR/CO DETECTOR COMBINATION

Ⓜ EXHAUST FAN AND LIGHT COMBINATION

⌚ CLG. MTD. EXHAUST FAN

Space for Architect Seal

RESIDENCE FOR:  
**MARKET HOME**  
4621 GENEVIEVE LEIGH DRIVE  
ANNECY - 85'

Job Number:  
**ANN8-0156-00**

Drawing Date:  
**03/30/2023**

Coord Name:  
**GREG P.**

Coord Phone:  
**COORD\_PHONE**

House Name:  
**the BELTERRA**

Drawing Scale: 1/8" = 1'0"

Contract Drawn By:  
**MSA**

Series:  
**ESTATE**

Plan No.:  
**4.02**

Born on Date:  
XX/XX/XX

CDs Drawn By:  
WAB

**Drees**  
HOMES<sup>SM</sup>

Copyright © 2022 ( 2021 ) The Drees Company. All Rights Reserved.  
1651 West Gate Circle, Brentwood, TN 37028-8047  
Phone: (615) 371-9750

Sheet Information

**4.02**  
Second Floor Mechanical Plan  
Elevation "E"

6" FASCIA (ALL SIDES)
8" FRIEZE (FRONT ONLY, UNLESS OTHERWISE NOTED)

1. REFER TO SHEET ON.1 FOR GENERAL NOTES.  
2. ROOFING MATERIAL PER SELECTIONS.  
3. CONTACT M&K ENGINEERING FOR HEADER SIZE/BRICK SUPPORT IF GRADE DROPS AND THE AMOUNT OF BRICK OVER GARAGE DOOR SHOWN ON CURRENT ELEVATION IS NO LONGER ACCURATE

--

SPAN	STEEL ANGLE SIZE	HEIGHT OF VENEER ABOVE LINTEL
Up to 3'-6"	L3-1/2 x3-1/2 x1/4	20 FT. MAX
Up to 6'-0"	L5x 3- 1/2x 5/16 (LLV)	20 FT. MAX
Up to 8'-0"	L6x 3- 1/2x 3/8 (LLV)	20 FT. MAX
9'-0"	L7x 4x 3/8 (LLV)	12 FT. MAX
*16'-0"	L7x 4x 3/8 (LLV)	3 FT. MAX
*16'-0"	L8x 4x 1/2 (LLV)	4-1/2 FT. MAX

Space for Architect Seal

Job Number: <b>ANN8-0156-00</b>	Drawing Date: <b>03/30/2023</b>	Coord Name: <b>GREG P.</b>	Coord Phone: <b>COORD_PHONE</b>
House Name: <b>the BELTERRA</b>			Contract Drawn By: <b>MSA</b>
			Series: <b>ESTATE</b>
			Plan No.: <b></b>
Born on Date: <b>XX/XX/XX</b>	CDs Drawn By: <b>WAB</b>		

