

General Notes:

1. REFER TO SHEET ON.1 FOR GENERAL NOTES.
2. DISHWASHER TO BE ON GFCI CIRCUIT

Key Notes:

- 1 TO SWITCH OR LIGHT ABOVE
- 2 5'6" SHELF @ 57" A.F.F.
- 3 WASHER TO LEFT OF DRYER
- 4 OUTLET FOR RANGE HOOD/MICROWAVE HELD HIGH - VENT TO EXTERIOR
- 5 OUTLET FOR DISHWASHER LOCATED IN SINK CABINET
- 6 LOCATION OF ELECTRICAL PANEL
- 7 DOUBLE SHOWER HEADS, FIELD VERIFY LOCATION WITH DESIGN CENTER
- 8 PROVIDE WATER SOFTENER LOOP
- 9
- 10 -

MECHANICAL LEGEND

◀ DATA JACK	○ CLG. MOUNTED LIGHT FIXT.	■ STAIR LIGHT
⊕ WALL OUTLET	○ SURFACE MOUNT DISC LIGHT OR RECESSED CEILING LIGHT, PER SPECS.	+ HOSE BIB
⊕ WEATHERPROOF GFCI OUTLET	○ WALL MOUNTED LIGHT FIXT.	△ SHOWER HEAD
⊕ 220 VOLT OUTLET	○ DOUBLE SPOTLIGHT FIXT.	⊕ GAS HOOK UP
⊕ GFCI OUTLET	○ DIRECTIONAL CAN LIGHT	⊕ FLOOR DRAIN
⊕ FLOOR OUTLET	○ PIN LIGHT	⊕ SMOKE DETECTOR
⊕ CABLE TELEVISION JACK	○ WALL SCONCE @ 5'-6" A.F.F.	⊕ SMOKE DETECTOR/CO DETECTOR COMBINATION
⊕ SINGLE POLE SWITCH	○ FLUORESCENT LIGHT	⊕ EXHAUST FAN AND LIGHT COMBINATION
⊕ 3-WAY SWITCH	○ UNDER CABINET LIGHTING	⊕ CLG. MTD. EXHAUST FAN
⊕ 4-WAY SWITCH		
⊕ BLOCK, MOUNT, & SWITCH FOR FUTURE FAN/LIGHT COMBINATION (CENTER, UNLESS OTHERWISE NOTED)		

**RESIDENCE FOR:
MARKET**

BLAIR ESTATES

Job Number: BLRE-0005-00	Drawing Date: 5/3/23	Coord Name: GREG PIEPER	Coord Phone: 859-578-4355
House Name: the MARSHALL			Contract Drawn By: DWW
Born on Date: 01/02/2018			CDs Drawn By: SSP
Series: SERIES_NM			Plan No.: PLAN_NM

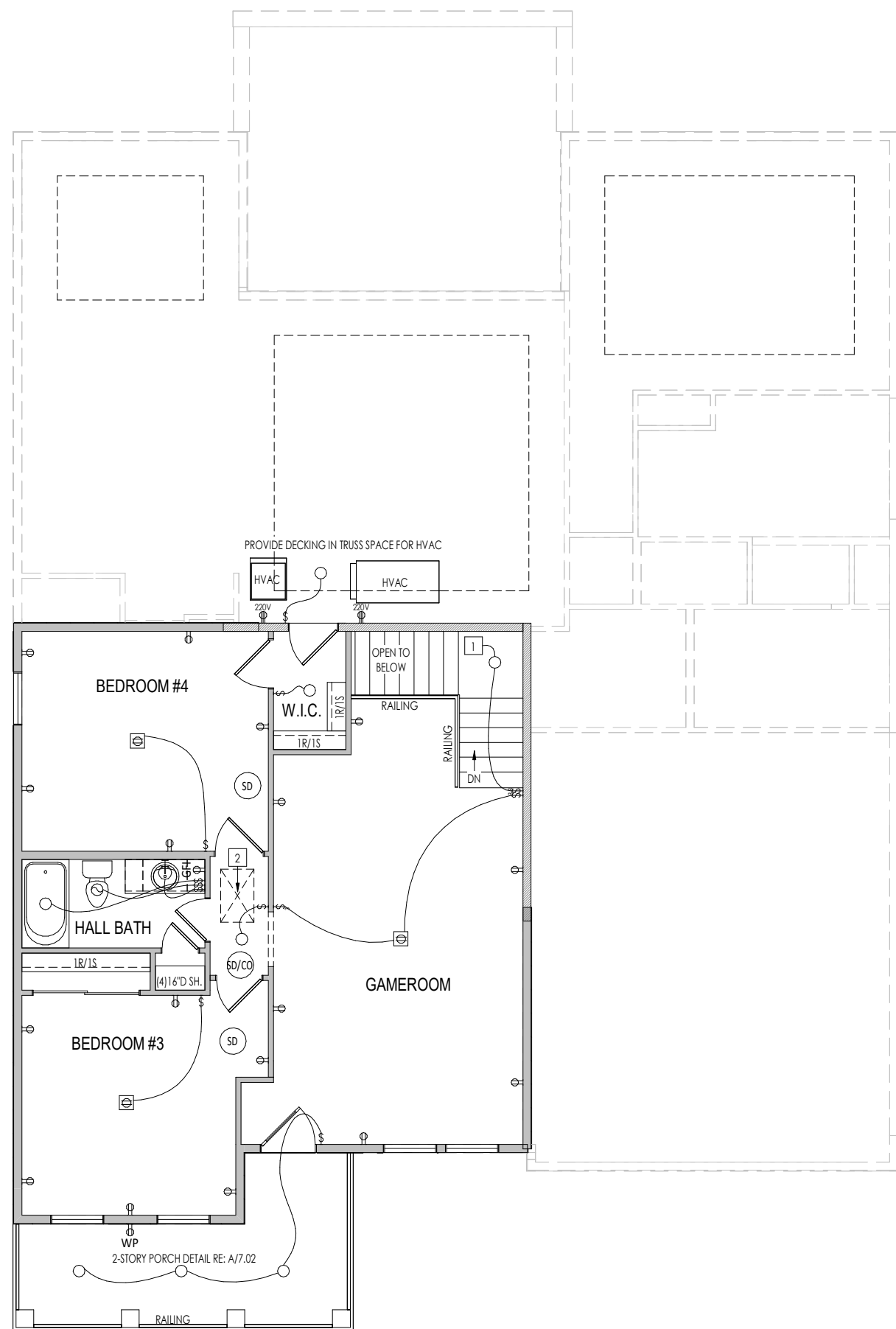
Drees HOMES
SM

Copyright © 2018 (2021) The Drees Company. All Rights Reserved.
9452 Phillips Hwy., Suite 4, Jacksonville FL 32256 CBC1253370
Phone: [904] 399-2501

4.01

First Floor Mechanical Plan
Elevation "B"

Sheet Information



General Notes:

1. REFER TO SHEET ON.1 FOR GENERAL NOTES.

Key Notes:

- 1 TO LIGHT OR SWITCH BELOW
- 2 22-1/2"x36" ATTIC ACCESS
- 3
- 4
- 5
- 6
- 7
- 8 -
- 9 -
- 10 -

MECHANICAL LEGEND

◀ DATA JACK	○ CLG. MOUNTED LIGHT FIXT.	■ STAIR LIGHT
⊖ WALL OUTLET	○ SURFACE MOUNT DISC LIGHT OR RECESSED CEILING LIGHT, PER SPECS.	+ HOSE BIB
⊖ WEATHERPROOF GFCI OUTLET	○ WALL MOUNTED LIGHT FIXT.	△ SHOWER HEAD
⊖ 220 VOLT OUTLET	⊕ DOUBLE SPOTLIGHT FIXT.	⊕ GAS HOOK UP
⊖ GFCI OUTLET	⊕ DIRECTIONAL CAN LIGHT	⊕ FLOOR DRAIN
⊖ FLOOR OUTLET	⊕ PIN LIGHT	⊕ SMOKE DETECTOR
⊖ CABLE TELEVISION JACK	⊕ WALL SCONCE @ 5'-6" A.F.F.	⊕ SMOKE DETECTOR/CO DETECTOR COMBINATION
⊖ SINGLE POLE SWITCH	⊕ FLUORESCENT LIGHT	⊕ EXHAUST FAN AND LIGHT COMBINATION
⊖ 3-WAY SWITCH	⊕ UNDER CABINET LIGHTING	⊕ CLG. MTD. EXHAUST FAN
⊖ 4-WAY SWITCH		
⊖ BLOCK, MOUNT, & SWITCH FOR FUTURE FAN/LIGHT COMBINATION (CENTER, UNLESS OTHERWISE NOTED)		

**RESIDENCE FOR:
MARKET**

BLAIR ESTATES

Job Number: BLRE-0005-00	Drawing Date: 5/3/23	Coord Name: GREG PIEPER	Coord Phone: 859-578-4355
House Name: the MARSHALL			Contract Drawn By: DWW
Born on Date: 01/02/2018			CDs Drawn By: SSP
Series: SERIES_NM			Plan No.: PLAN_NM

Copyright © 2018 (2021) The Drees Company. All Rights Reserved.
9452 Phillips Hwy., Suite 4, Jacksonville FL 32256 CBC1253370
Phone: (904) 399-2501

4.02

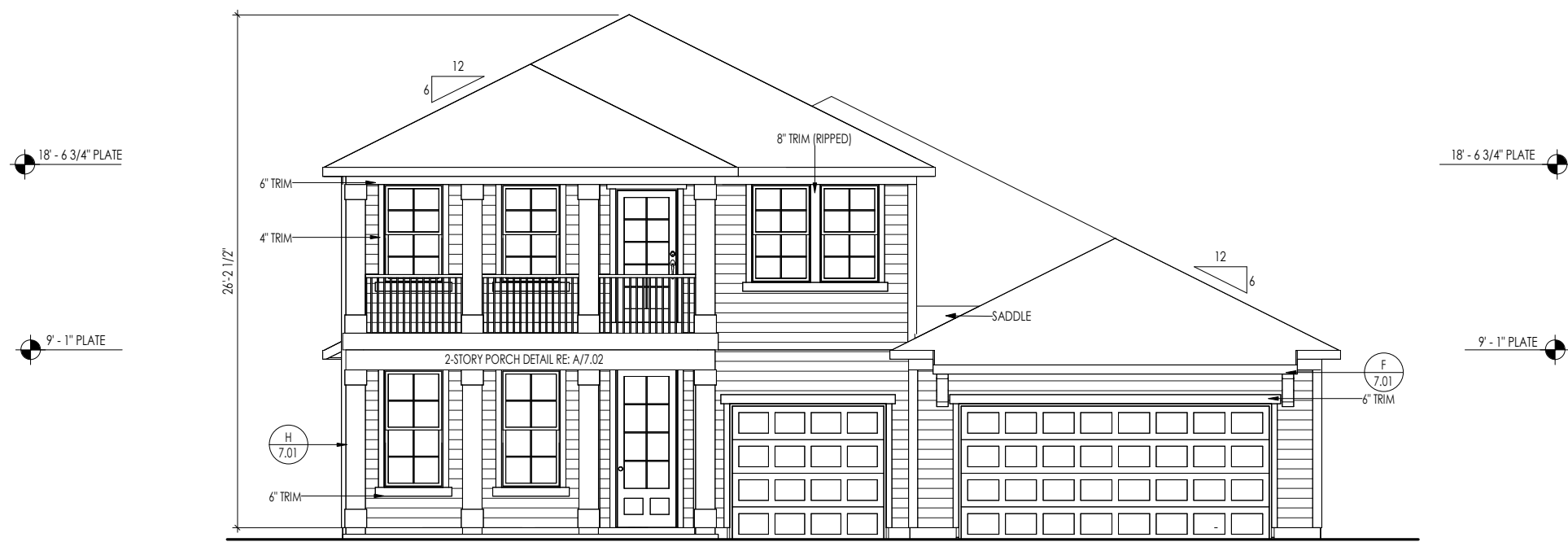
Second Floor Mechanical Plan
Elevation "B"

Sheet Information

TYPICAL TRIM:
6" FASCIA
 (ALL SIDES)
8" FRIEZE
 (FRONT ONLY, UNLESS OTHERWISE NOTED)

General Notes:
 1. REFER TO SHEET ON.1 FOR GENERAL NOTES.
 2. ROOFING MATERIAL PER SELECTIONS.

Key Notes:
 1 -
 2 -
 3 -
 4 -
 5 -



ELEVATION "B"

**RESIDENCE FOR:
 MARKET**

BLAIR ESTATES

Job Number: BLRE-0005-00	Drawing Date: 5/3/23	Coord Name: GREG PIEPER	Coord Phone: 859-578-4355
House Name: the MARSHALL			Contract Drawn By: DWW
Born on Date: 01/02/2018			CDs Drawn By: SSP
Series: SERIES_NM			Plan No.: PLAN_NM

Drees HOMES
Copyright © 2018 (2021) The Drees Company. All Rights Reserved.
 9452 Phillips Hwy., Suite 4, Jacksonville FL 32256 CBC1253370
 Phone: (904) 399-2501

Sheet Information

6.01
 Front Elevation
 Elevation "B"