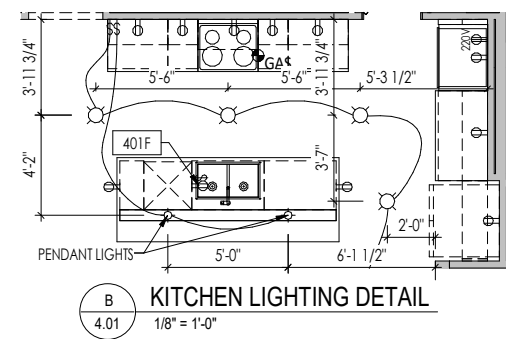
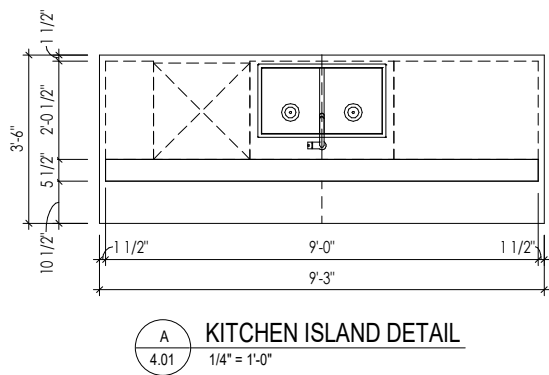
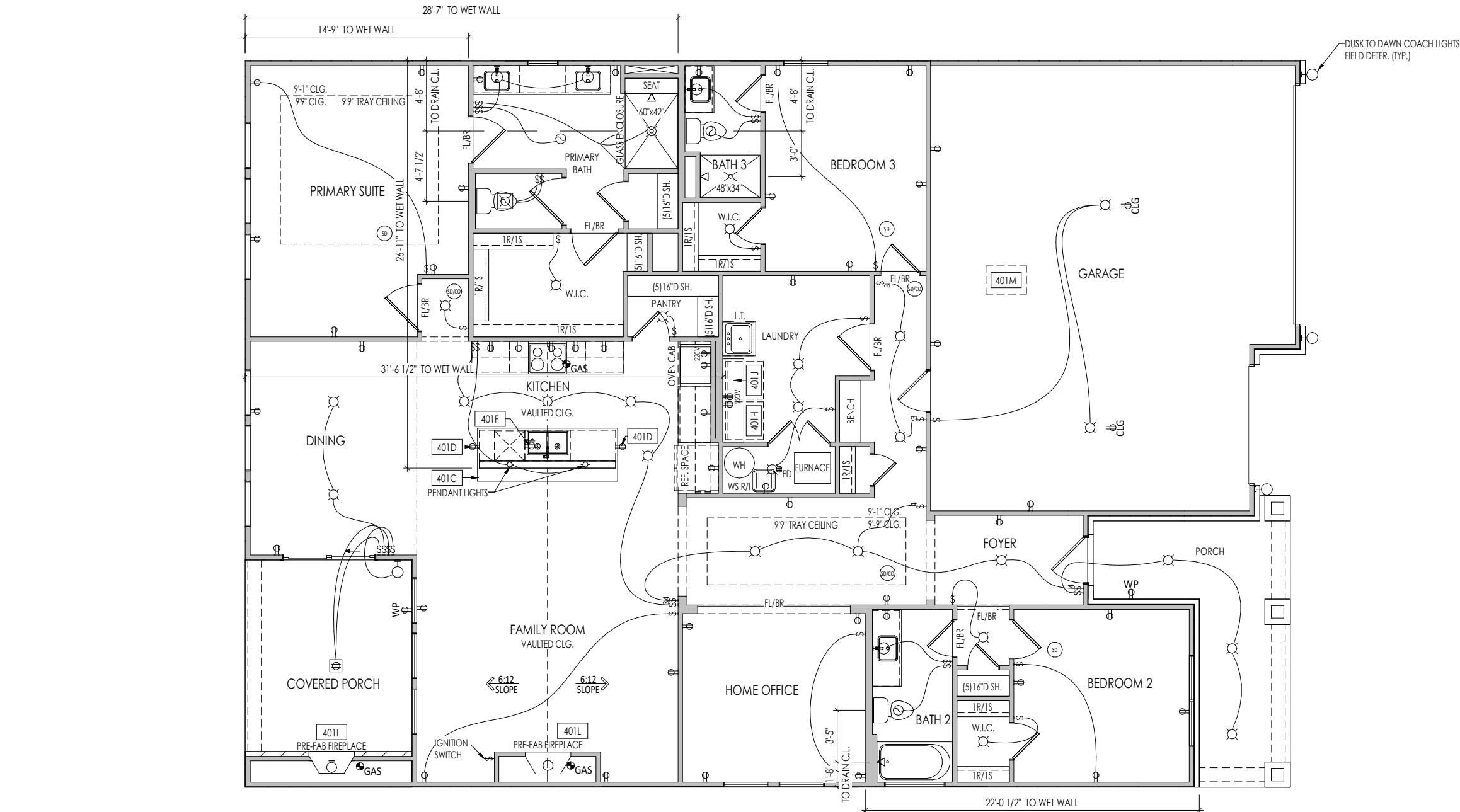


I:\CG\clients\MI\WEST INDIAN POLICE\AS\CAR-0064-01\CAR-0064-01.rvt



General Notes:

1. REFER TO SHEET ON.1 FOR GENERAL NOTES.

Key Notes:

401C	RE: DETAIL A/4.01 FOR KITCHEN ISLAND COUNTERTOP DIMENSIONS
401D	HOLD OUTLET HIGH ON ISLAND
401F	OUTLET FOR DISHWASHER LOCATED IN SINK CABINET
401H	LOCATE WASHER TO LEFT OF DRYER
401J	UPPER WALL CABINETS OR 1 6" DEEP x 5 6" LONG SHELF HELD AT 57" A.F.F. - REFER TO SELECTIONS
401L	DIRECT VENT FIREPLACE
401M	22-1/2"x32" ATTIC ACCESS PANEL IN CEILING

MECHANICAL LEGEND

⊖ WALL OUTLET	⊙ CLG. MOUNTED LIGHT FIXT.	⊕ HOSE BIB
⊖ WEATHERPROOF GFCI OUTLET	⊙ SURFACE MOUNT DISC LIGHT OR RECESSED CEILING LIGHT, PER SPECS.	⊕ GAS GAS HOOK UP
⊖ 220 VOLT OUTLET	⊙ WALL MOUNTED LIGHT FIXT.	⊕ FLOOR DRAIN
⊖ GFCI OUTLET	⊕ DOUBLE SPOTLIGHT FIXT.	⊖ SMOKE DETECTOR
⊖ FLOOR OUTLET	⊕ COUNTER POP-UP OUTLET	⊖ SMOKE DETECTOR/CO DETECTOR COMBINATION
⊖ COUNTER POP-UP OUTLET	⊕ DIRECTIONAL CAN LIGHT	⊖ EXHAUST FAN AND LIGHT COMBINATION
⊖ SINGLE POLE SWITCH	⊕ PIN LIGHT	⊖ CLG. MTD. EXHAUST FAN
⊖ 3-WAY SWITCH	⊕ WALL SCONCE @ 5'-6" A.F.F.	⊖ DATA JACK
⊖ 4-WAY SWITCH	⊖ FLUORESCENT LIGHT	⊖ CABLE TELEVISION JACK
⊖ STAIR LIGHT	⊖ UNDER CABINET LIGHTING	
⊖ BLOCK, MOUNT, & SWITCH FOR FUTURE FAN/LIGHT COMBINATION (CENTER, UNLESS OTHERWISE NOTED)		

Space for Architect Seal

RESIDENCE FOR:
MARKET
20046 RIPPLING ROCK COURT
CARRAMORE

Job Number: CAR-0064-00	Drawing Date: 04.02.2025	Coord Name: L.RAMLER	Coord Phone: 859.578.4212
House Name:		Drawing Scale: 1/8" = 1'-0"	
the PARKETTE		Contract Drawn By: IES	
		Series: SERIES_NM	
Born on Date: 08/30/19		CDs Drawn By: CLM	
		Plan No.: PLAN_NM	

Copyright © 2023 (2024) The Drees Company. All Rights Reserved.
900 East 96th Street, Suite 100, Indianapolis, IN 46240
Phone: [317] 347-7300

Sheet Information

4.01
First Floor Mechanical Plan
Elevation "D"

TYPICAL TRIM:
6" FASCIA/ 8" w/HARDIE SOFFIT (ALL SIDES)
8" FRIEZE (FRONT ONLY, UNLESS OTHERWISE NOTED)

- General Notes:
1. REFER TO SHEET ON.1 FOR GENERAL NOTES.
 2. ROOFING MATERIAL PER SELECTIONS.
 3. CONTACT M&K ENGINEERING FOR HEADER SIZE/BRICK SUPPORT IF GRADE DROPS AND THE AMOUNT OF BRICK OVER GARAGE DOOR SHOWN ON CURRENT ELEVATION IS NO LONGER ACCURATE
 4. REFER TO SHEET S-0 FOR STRUCTURAL DETAILS AND INFORMATION
 5. FRONT AND GARAGE DOORS PER SELECTIONS

Key Notes:

Space for Architect Seal

RESIDENCE FOR:
MARKET
20046 RIPPLING ROCK COURT
CARRAMORE

Job Number: CAR-0064-00	Drawing Date: 04.02.2025	Coord Name: L.RAMLER	Coord Phone: 859.578.4212
House Name:			Contract Drawn By: IES
the PARKETTE			Series: SERIES_NM
			Plan No.: PLAN_NM

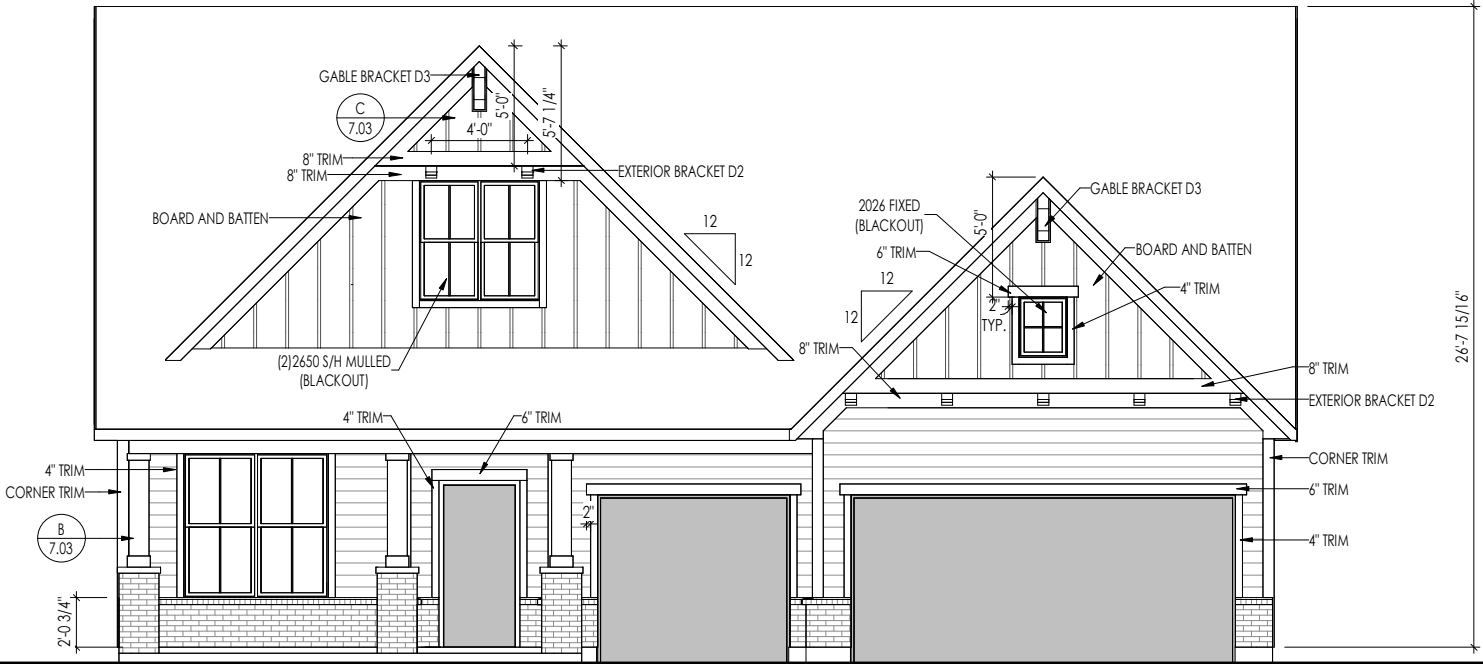


Copyright © 2023 (2024) The Drees Company. All Rights Reserved.
900 East 96th Street, Suite 100, Indianapolis, IN 46240
Phone: [317] 347-7300

Sheet Information

6.01

Front Elevation
Elevation "D"



ELEVATION "D"