

**General Notes:**

1. REFER TO SHEET ON.1 FOR GENERAL NOTES.

**Key Notes:**

401A TO SWITCH OR LIGHT ABOVE  
 401C KITCHEN ISLAND RE: C/7.01 FOR FRAMING  
 401D HOLD OUTLET HIGH ON ISLAND  
 401E OUTLET FOR RANGE HOOD/MICROWAVE HELD HIGH - VENT TO EXTERIOR  
 401F OUTLET FOR DISHWASHER LOCATED IN SINK CABINET  
 401G BENCH RE: F/D2.2 - INSTALLED BY TRIM CARPENTER  
 401W HVAC RETURN LOCATION

**MECHANICAL LEGEND**

⊕ WALL OUTLET	⊙ CLG. MOUNTED LIGHT FIXT.	⊕ HOSE BIB
⊕ WEATHERPROOF GFCI OUTLET	⊙ SURFACE MOUNT DISC LIGHT OR RECESSED CEILING LIGHT, PER SPECS.	⊕ SHOWER HEAD
⊕ 220 VOLT OUTLET	⊙ WALL MOUNTED LIGHT FIXT.	⊕ GAS HOOK UP
⊕ GFCI OUTLET	⊙ DOUBLE SPOTLIGHT FIXT.	⊕ FLOOR DRAIN
⊕ FLOOR OUTLET	⊙ DIRECTIONAL CAN LIGHT	⊕ SMOKE DETECTOR
⊕ COUNTER POP-UP OUTLET	⊙ PIN LIGHT	⊕ SMOKE DETECTOR/CO DETECTOR COMBINATION
⊕ SINGLE POLE SWITCH	⊙ WALL SCONCE @ 5'-6" A.F.F.	⊕ EXHAUST FAN AND LIGHT COMBINATION
⊕ 3-WAY SWITCH	⊙ FLUORESCENT LIGHT	⊕ CLG. MTD. EXHAUST FAN
⊕ 4-WAY SWITCH	⊙ UNDER CABINET LIGHTING	⊕ DATA JACK
⊕ STAIR LIGHT	⊕ BLOCK, MOUNT, & SWITCH FOR FUTURE FAN/LIGHT COMBINATION (CENTER, UNLESS OTHERWISE NOTED)	⊕ CABLE TELEVISION JACK

Space for Architect Seal

**RESIDENCE FOR:  
MODEL HOME**

**CORBETT LANDING**

Job Number: <b>CRBT-0099-00</b>	Drawing Date: <b>09/11/2023</b>	Coord Name: <b>GREG P.</b>	Coord Phone: <b>859.578.4355</b>
House Name: <b>the BALLENTINE</b>		Drawing Scale: 1/8" = 1'0"	
Born on Date: 07/18/2022		CDs Drawn By: Brian W.	

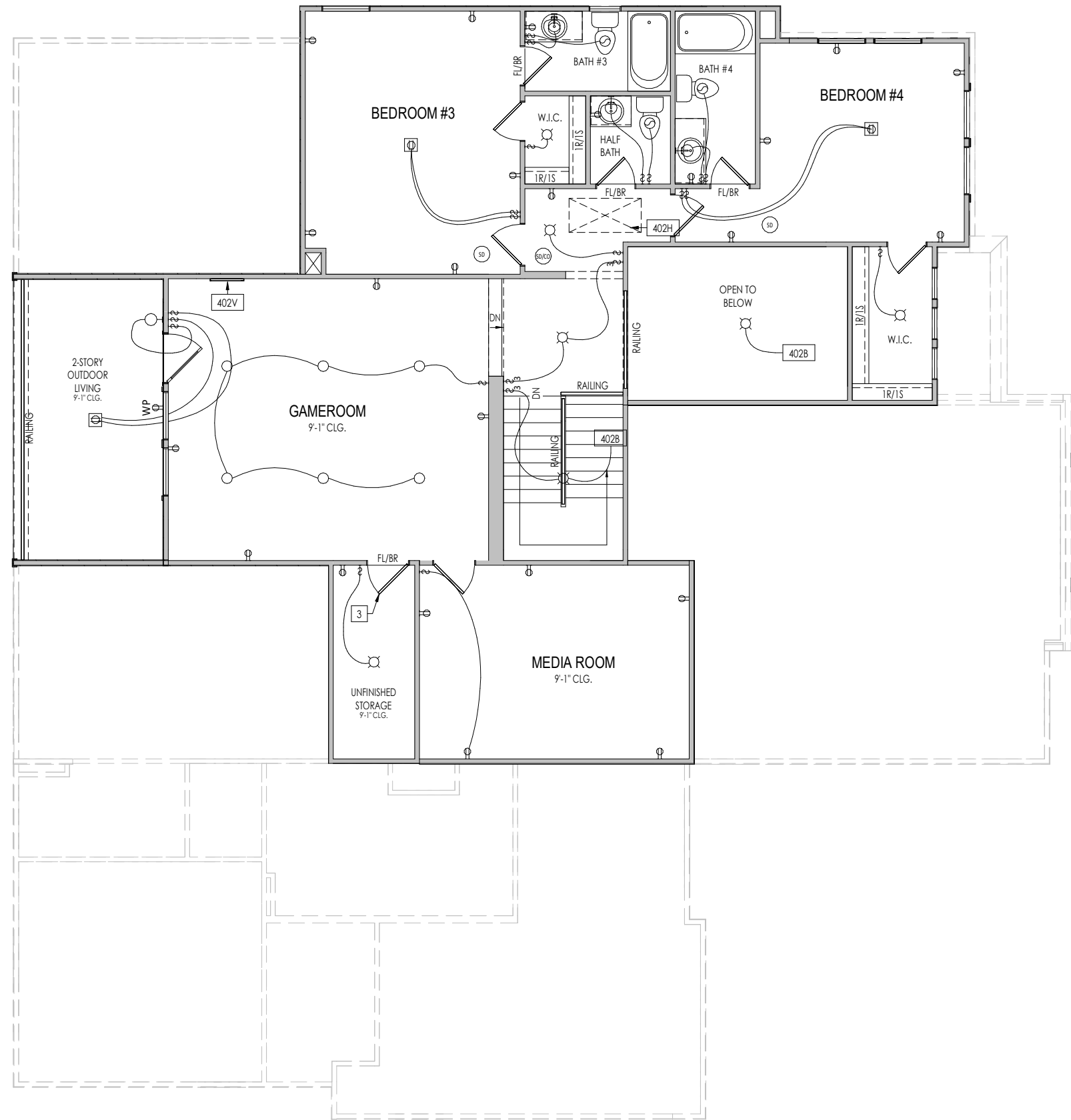
Contract Drawn By: **MSA**  
 Series: **PREMIER**  
 Plan No.: **N/A**

**Drees  
HOMES**  
SM

Copyright © 2022 (2022) The Drees Company. All Rights Reserved.  
7701 Six Forks Road, Suite 132, Raleigh, NC 27615  
Phone: [919] 844-9288

4.01

**First Floor Mechanical Plan  
Elevation "B"**



**General Notes:**

1. REFER TO SHEET ON.1 FOR GENERAL NOTES.

**Key Notes:**

402B TO SWITCH OR LIGHT BELOW

402H PULL DOWN ATTIC ACCESS STAIRS W/ LIGHT AND OUTLET

402V WALL ATTIC ACCESS DETAIL RE: M/D2.1

**MECHANICAL LEGEND**

⊖ WALL OUTLET	⊙ CLG. MOUNTED LIGHT FIXT.	⊕ HOSE BIB
⊖ WEATHERPROOF GFCI OUTLET	⊙ SURFACE MOUNT DISC LIGHT OR RECESSED CEILING LIGHT, PER SPECS.	⊕ SHOWER HEAD
⊖ 220 VOLT OUTLET	⊙ WALL MOUNTED LIGHT FIXT.	⊕ GAS HOOK UP
⊖ GFCI OUTLET	⊙ DOUBLE SPOTLIGHT FIXT.	⊕ FLOOR DRAIN
⊖ FLOOR OUTLET	⊙ DIRECTIONAL CAN LIGHT	⊖ SMOKE DETECTOR
⊖ COUNTER POP-UP OUTLET	⊙ PIN LIGHT	⊖ SMOKE DETECTOR/CO DETECTOR COMBINATION
⊖ SINGLE POLE SWITCH	⊖ WALL SCONCE @ 5'-6" A.F.F.	⊖ EXHAUST FAN AND LIGHT COMBINATION
⊖ 3-WAY SWITCH	⊖ FLUORESCENT LIGHT	⊖ CLG. MTD. EXHAUST FAN
⊖ 4-WAY SWITCH	⊖ UNDER CABINET LIGHTING	⊖ DATA JACK
⊖ STAIR LIGHT	⊖ BLOCK, MOUNT, & SWITCH FOR FUTURE FAN/LIGHT COMBINATION (CENTER, UNLESS OTHERWISE NOTED)	⊖ CABLE TELEVISION JACK

Space for Architect Seal

**RESIDENCE FOR:  
MODEL HOME**

**CORBETT LANDING**

Job Number: <b>CRBT-0099-00</b>	Drawing Date: <b>09/11/2023</b>	Coord Name: <b>GREG P.</b>	Coord Phone: <b>859.578.4355</b>
------------------------------------	------------------------------------	-------------------------------	-------------------------------------

House Name: <b>the BALLENTINE</b>	Drawing Scale: 1/8" = 1'0"	Contract Drawn By: <b>MSA</b>
--------------------------------------	----------------------------	----------------------------------

Series: <b>PREMIER</b>
---------------------------

Born on Date: 07/18/2022	CDs Drawn By: Brian W.	Plan No.: <b>N/A</b>
--------------------------	------------------------	----------------------

**Drees HOMES**  
SM  
Copyright © 2022 (2022) The Drees Company. All Rights Reserved.  
7701 Six Forks Road, Suite 132, Raleigh, NC 27615  
Phone: (919) 844-9288

Sheet Information

**4.02**

Second Floor Mechanical Plan  
Elevation "B"

<b>TYPICAL TRIM:</b>
<b>6" FASCIA</b> (ALL SIDES)
<b>8" FRIEZE</b> (FRONT ONLY, UNLESS OTHERWISE NOTED)

**General Notes:**

- REFER TO SHEET QN.1 FOR GENERAL NOTES.
- ROOFING MATERIAL PER SELECTIONS.
- CONTACT M&K ENGINEERING FOR HEADER SIZE/BRICK SUPPORT IF GRADE DROPS AND THE AMOUNT OF BRICK OVER GARAGE DOOR SHOWN ON CURRENT ELEVATION IS NO LONGER ACCURATE.

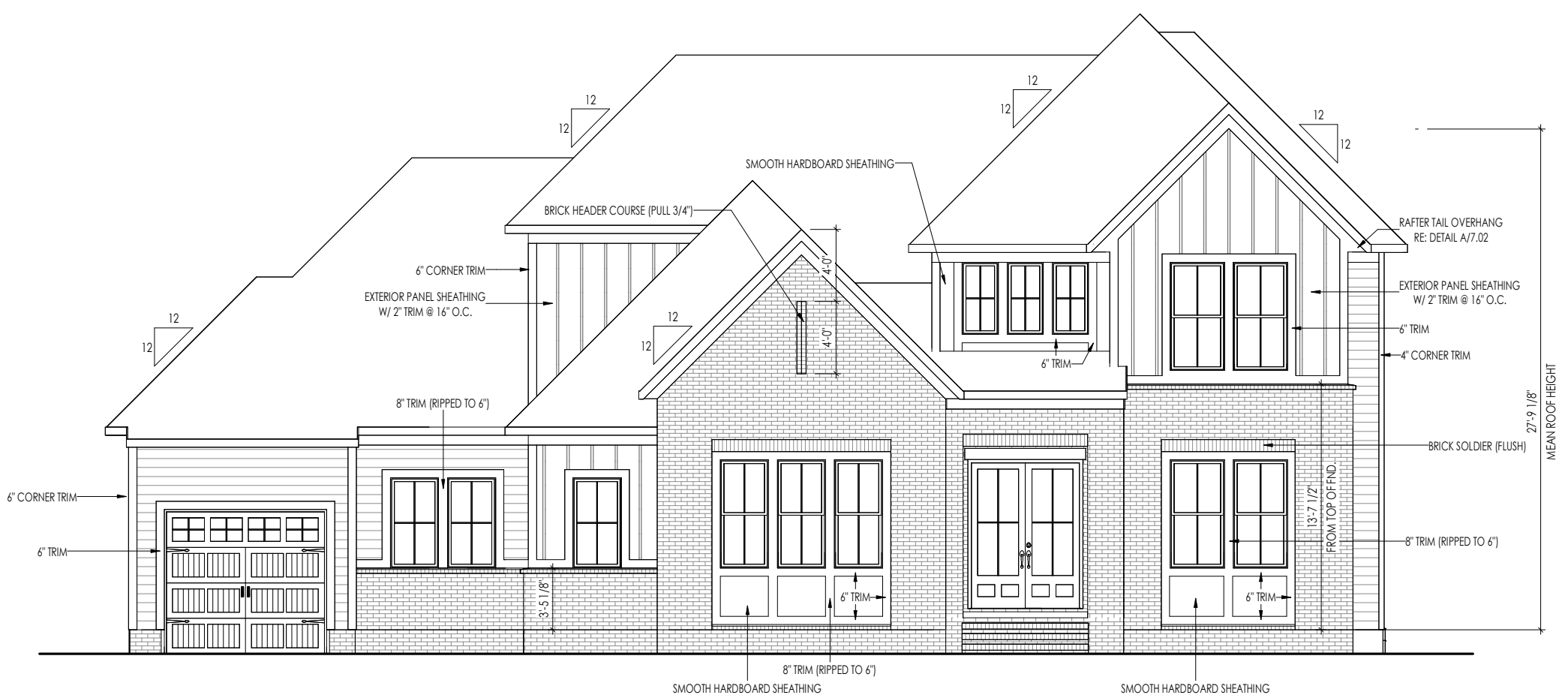
**Key Notes:**

**BRICK VENEER LINTEL SCHEDULE**

SPAN	STEEL ANGLE SIZE	HEIGHT OF VENEER ABOVE LINTEL
Up to 3'-6"	L3-1/2 x3-1/2 x1/4	20 FT. MAX
Up to 6'-0"	L5x 3- 1/2x 5/16 (LLV)	20 FT. MAX
Up to 8'-0"	L6x 3- 1/2x 3/8 (LLV)	20 FT. MAX
9'-0"	L7x 4x 3/8 (LLV)	12 FT. MAX
*16'-0"	L7x 4x 3/8 (LLV)	3 FT. MAX
*16'-0"	L8x 4x 1/2 (LLV)	4-1/2 FT. MAX

ALL LINTELS <=6' SHALL HAVE 4" MINIMUM BEARING AT EACH END.  
 ALL LINTELS >=6' SHALL HAVE 8" MINIMUM BEARING AT EACH END.  
 \* FASTENED TO HDR @ 1/3 SPAN POINTS THRU 1-1/2" LONG VERTICALLY SLOTTED HOLES IN LINTEL w/ 1/2" DIA. x 3-1/2" LONG LAG SCREWS. LOCATE LAG SCREWS @ MIDDLE OF SLOTTED HOLE & TIGHTEN SCREWS ENOUGH TO ALLOW MOVEMENT OF LINTEL.  
 \*\*\*ANY LINTEL CONDITION NOT SPECIFIED ABOVE SHALL BE DESIGNED

Space for Architect Seal



**RESIDENCE FOR:  
MODEL HOME**

**CORBETT LANDING**

Job Number: <b>CRBT-0099-00</b>	Drawing Date: <b>09/11/2023</b>	Coord Name: <b>GREG P.</b>	Coord Phone: <b>859.578.4355</b>
House Name: <b>the BALLENTINE</b>			Contract Drawn By: <b>MSA</b>
Born on Date: 07/18/2022			CDs Drawn By: Brian W.
Series: <b>PREMIER</b>			Plan No.: <b>N/A</b>



Copyright © 2022 (2022) The Drees Company. All Rights Reserved.  
7701 Six Forks Road, Suite 132, Raleigh, NC 27615  
Phone: [919] 844-9288

Sheet Information

# 6.01

Front Elevation  
Elevation "B"