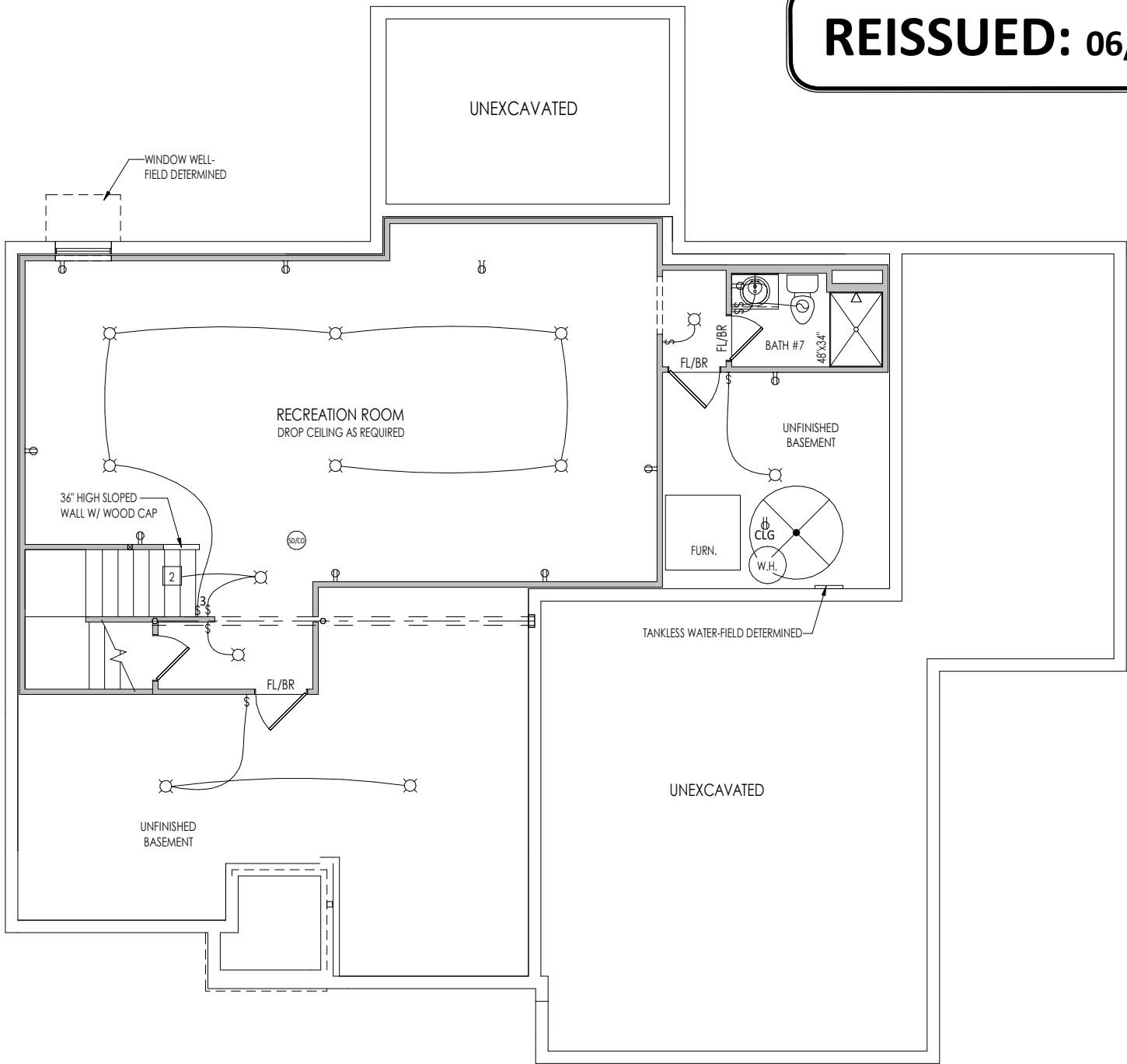


REISSUED: 06/09/2022



General Notes:

1. REFER TO SHEET ON.1 FOR GENERAL NOTES.

Key Notes:

- 1
- 2 TO SWITCH ABOVE
- 3
- 4 --
- 5 --
- 6 --
- 7 --
- 8 --
- 9 --
- 10 --

MECHANICAL LEGEND

◀ PHONE JACK	○ FLUORESCENT LIGHT
⊖ WALL OUTLET	≡ UNDER CABINET LIGHTING
⊖ WEATHERPROOF OUTLET	⊗ CLG. MOUNTED LIGHT FIXT.
⊖ 220 VOLT OUTLET	⊖ WALL MOUNTED LIGHT FIXT.
⊖ GROUND FAULT OUTLET	⊖ RECESSED CEILING LIGHT
⊖ FLOOR OUTLET	⊖ DOUBLE SPOTLIGHT FIXT.
⊖ CABLE TELEVISION JACK	⊖ DIRECTIONAL CAN LIGHT
⊖ SINGLE POLE SWITCH	⊖ PIN LIGHT
⊖ 3-WAY SWITCH	⊖ WALL SCONCE @ 5'-6" A.F.F.
⊖ 4-WAY SWITCH	⊖ STAIR LIGHT
⊖ BLOCK, MOUNT, & SWITCH FOR FUTURE FAN/LIGHT COMBINATION (CENTER, UNLESS OTHERWISE NOTED)	⊖ HOSE BIB
⊖ EXHAUST FAN AND LIGHT COMBINATION	⊖ GAS
⊖ CLG. MTD. EXHAUST FAN	⊖ GAS HOOK UP
⊖ WALL MTD. EXHAUST FAN	⊖ FLOOR DRAIN
	⊖ SMOKE DETECTOR
	⊖ CO DETECTOR
	⊖ SMOKE DETECTOR/ CO DETECTOR COMBINATION

RESIDENCE FOR:

MODEL  
36874 ALAMFI ROAD  
NORTH RIDGE POINTE

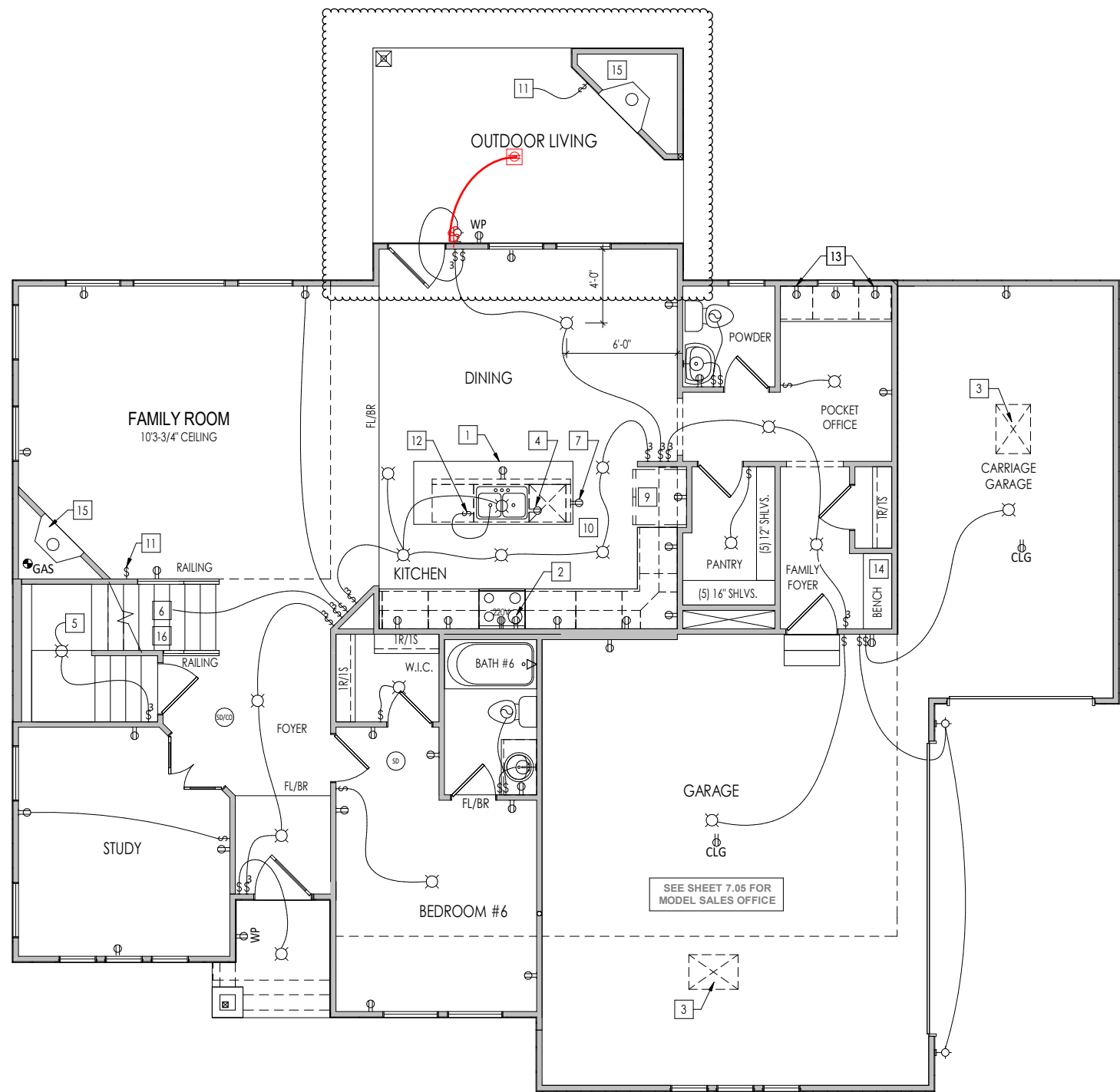
Job Number: NRP-0196-00	Drawing Date: 06/03/2022	Coord Name: MPH	Coord Phone: 859-578-4290
House Name: the BELLEVILLE			Contract Drawn By: EWT
			Series:
			Plan No.:
Born on Date: 08.19.2013	CDs Drawn By: BKW		

**Drees**  
HOMES<sup>SM</sup>

Copyright © 2022 [ 2018 ] The Drees Company. All Rights Reserved.  
6860 West Snowville Road, Suite 105, Brecksville, OH 44141-3242  
Phone: [440] 717-9670

Sheet Information

1.03  
Basement Mechanical Plan  
Elevation "F"



**REISSUED: 06/09/2022**

#### General Notes:

1. REFER TO SHEET ON.1 FOR GENERAL NOTES.

#### Key Notes:

- 1 KITCHEN ISLAND RE: DETAIL A/7.02 FOR FRAMING DETAILS
- 2 OUTLET FOR RANGE HOOD HELD HIGH. VENTED TO EXTERIOR.
- 3 22-1/2"x32" ATTIC ACCESS
- 4 OUTLET FOR DISHWASHER LOCATED IN SINK CABINET
- 5 TO SWITCH OR LIGHT BELOW
- 6 TO SWITCH OR LIGHT ABOVE
- 7 HOLD OUTLET HIGH ON ISLAND
- 8
- 9 ALLOW 3'3" FOR FINISHED CABINET
- 10 REFER TO CABINET SHOP DRAWINGS FOR FINAL KITCHEN LAYOUT
- 11 SWITCH FOR FIREPLACE
- 12 SWITCH FOR DISPOSAL INSIDE SINK CABINET
- 13 OUTLETS @ 42" A.F.F.
- 14 BENCH W/ STOARGE AND COAT HOOKS
- 15 DIRECT VENT FIREPLACE-REFER TO SELECTION SHEET FOR MODEL AND FIREPLACE DETAIL SHEET F-1 FOR FRAMING INFORMATION
- 16 OPEN TREAD OAK STAIRS W/ CARPET RUNNER

#### MECHANICAL LEGEND

◀ PHONE JACK	⊗ CLG. MOUNTED LIGHT FIXT.	■ STAIR LIGHT
⊕ WALL OUTLET	○ SURFACE MOUNT DISC LIGHT OR RECESSED CEILING LIGHT, PER SPECS.	+ HOSE BIB
⊕ WEATHERPROOF GFCI OUTLET	⊕ WALL MOUNTED LIGHT FIXT.	△ SHOWER HEAD
⊕ 220 VOLT OUTLET	⊕ DOUBLE SPOTLIGHT FIXT.	⊕ GAS GAS HOOK UP
⊕ GFCI OUTLET	⊕ DIRECTIONAL CAN LIGHT	⊕ FLOOR DRAIN
⊕ FLOOR OUTLET	⊕ PIN LIGHT	⊕ SMOKE DETECTOR
⊕ CABLE TELEVISION JACK	⊕ WALL SCONCE @ 5'-6" A.F.F.	⊕ CO DETECTOR
↔ SINGLE POLE SWITCH	⊕ FLUORESCENT LIGHT	⊕ SMOKE DETECTOR/ CO DETECTOR COMBINATION
↔ 3-WAY SWITCH	⊕ UNDER CABINET LIGHTING	⊕ EXHAUST FAN AND LIGHT COMBINATION
↔ 4-WAY SWITCH	⊕ BLOCK, MOUNT, & SWITCH FOR FUTURE FAN/LIGHT COMBINATION (CENTER, UNLESS OTHERWISE NOTED)	⊕ CLG. MTD. EXHAUST FAN

RESIDENCE FOR:  
**MODEL**  
36874 ALAMFI ROAD  
NORTH RIDGE POINTE

Job Number: <b>NRP-0196-00</b>	Drawing Date: <b>06/03/2022</b>	Coord Name: <b>MPH</b>	Coord Phone: <b>859-578-4290</b>
-----------------------------------	------------------------------------	---------------------------	-------------------------------------

House Name: <b>the BELLEVILLE</b>	Drawing Scale: 1/8" = 1'0"	Contract Drawn By: <b>EWT</b>
--------------------------------------	----------------------------	----------------------------------

Series:	Plan No.:
---------	-----------

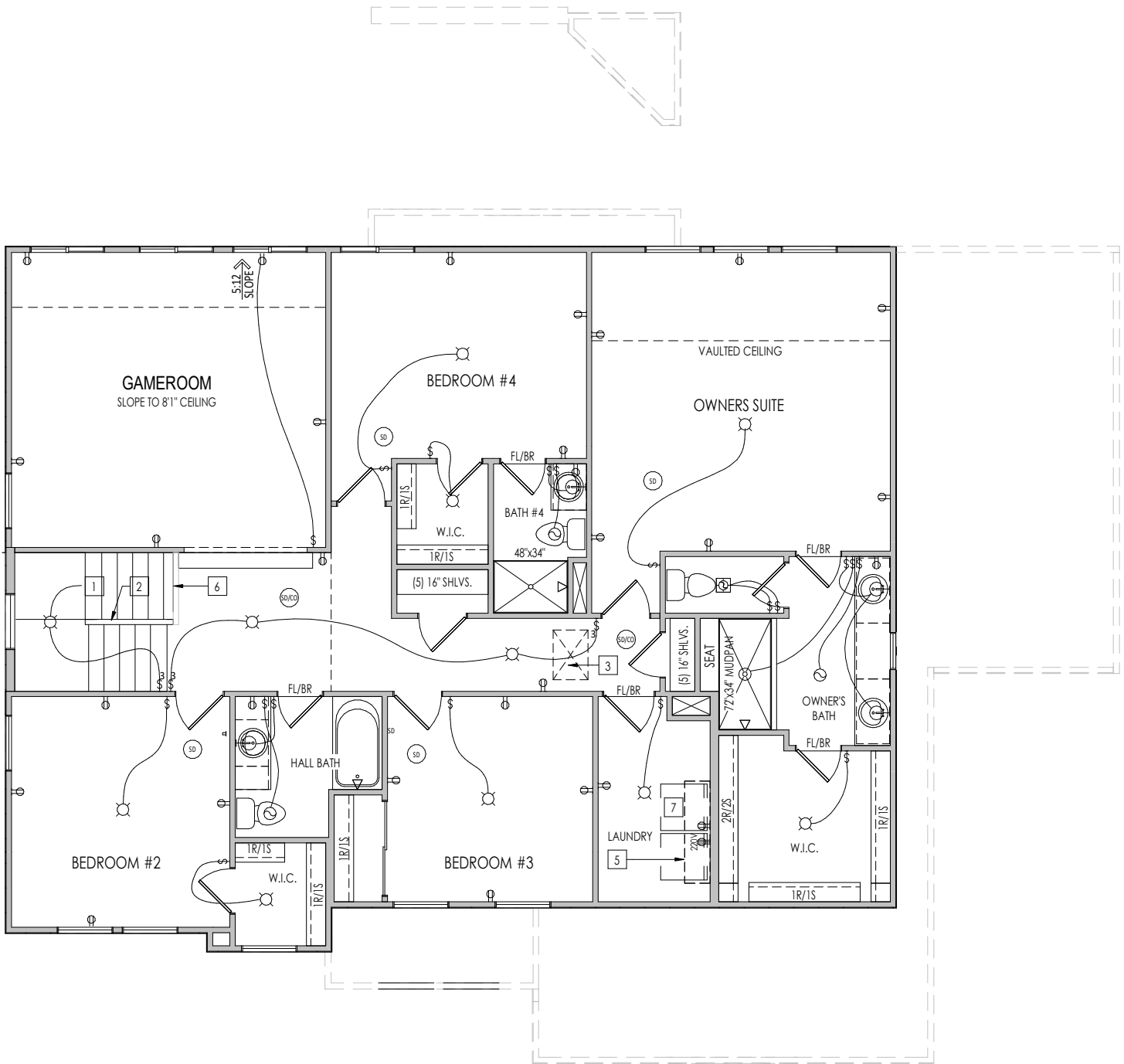
Born on Date: 08.19.2013	CDs Drawn By: BKW
-----------------------------	----------------------



Copyright © 2022 [ 2018 ] The Drees Company. All Rights Reserved.  
6860 West Snowville Road, Suite 105, Brecksville, OH 44141-3242  
Phone: [440] 717-9670

Sheet Information

**4.01**  
First Floor Mechanical Plan  
Elevation "F"



General Notes:

1. REFER TO SHEET ON.1 FOR GENERAL NOTES.

Key Notes:

- 1 TO LIGHT OR SWITCH BELOW
- 2 36" HIGH WALL WITH WOOD CAP
- 3 22-1/2"x32" ATTIC ACCESS
- 4 SHOWER SEAT SLOPED 3/4" FOR WATER RUN-OFF OVER FLEXIBLE CHLORINATED POLYETHYLENE WATERPROOF MEMBRANE (CONTINUE OVER FRONT AND BACK OF SEAT)
- 5 5/8" SHELF @ 5'7" A.F.F.
- 6 42" HIGH WALL WITH WOOD CAP
- 7 WASHER TO LEFT OF DRYER
- 8 --
- 9 --
- 10 --
- 11 --
- 12 --
- 13 --
- 14 --
- 15 --

MECHANICAL LEGEND

- |                            |  |  |
|----------------------------|--|--|
| ◀ PHONE JACK               | ⊗ CLG. MOUNTED LIGHT FIXT.   | ■ STAIR LIGHT                            |
| ⊕ WALL OUTLET              | ○ SURFACE MOUNT DISC LIGHT OR RECESSED CEILING LIGHT, PER SPECS.                           | + HOSE BIB                               |
| ⊕ WEATHERPROOF GFCI OUTLET | ⊕ WALL MOUNTED LIGHT FIXT.   | ▽ SHOWER HEAD                            |
| ⊕ 220 VOLT OUTLET          | ⊕ DOUBLE SPOTLIGHT FIXT.   | ⊕ GAS GAS HOOK UP                        |
| ⊕ GFCI OUTLET              | ⊕ DIRECTIONAL CAN LIGHT  | ⊕ FLOOR DRAIN                            |
| ⊕ FLOOR OUTLET             | ⊕ PIN LIGHT  | ⊕ SMOKE DETECTOR                         |
| ⊕ CABLE TELEVISION JACK    | ⊕ WALL SCONCE @ 5'-6" A.F.F.   | ⊕ CO DETECTOR                            |
| ↔ SINGLE POLE SWITCH       | ⊕ FLUORESCENT LIGHT  | ⊕ SMOKE DETECTOR/CO DETECTOR COMBINATION |
| ↔ 3-WAY SWITCH             | ⊕ UNDER CABINET LIGHTING   | ⊕ EXHAUST FAN AND LIGHT COMBINATION      |
| ↔ 4-WAY SWITCH             | ⊕ BLOCK, MOUNT, & SWITCH FOR FUTURE FAN/LIGHT COMBINATION (CENTER, UNLESS OTHERWISE NOTED) | ⊕ CLG. MTD. EXHAUST FAN                  |

RESIDENCE FOR:

**MODEL**  
**36874 ALAMFI ROAD**  
**NORTH RIDGE POINTE**


Job Number:	Drawing Date:	Coord Name:	Coord Phone:
<b>NRP-0196-00</b>	<b>06/03/2022</b>	<b>MPH</b>	<b>859-578-4290</b>

House Name:	Drawing Scale: 1/8" = 1' 0"	Contract Drawn By:
<b>the BELLEVILLE</b>		<b>EWI</b>

Series:
<b>the BELLEVILLE</b>

Plan No.:
<b>the BELLEVILLE</b>

Born on Date:	08.19.2013	CDs Drawn By:	BKW
---------------	------------	---------------	-----



Copyright © 2022 [ 2018 ] The Drees Company. All Rights Reserved.  
6860 West Snowville Road, Suite 105, Brecksville, OH 44141-3242  
Phone: [440] 717-9670

Sheet Information

**4.02**

Second Floor Mechanical Plan  
Elevation "F"

BRICK VENEER LINTEL SCHEDULE

SPAN	STEEL ANGLE SIZE	HEIGHT OF VENEER ABOVE LINTEL
Up to 3'-6"	L3-1/2 x3-1/2 x1/4	20 FT. MAX
Up to 6'-0"	L5x 3- 1/2x 5/16 (LLV)	20 FT. MAX
Up to 8'-0"	L6x 3- 1/2x 3/8 (LLV)	20 FT. MAX
9'-0"	L7x 4x 3/8 (LLV)	12 FT. MAX
*16'-0"	L7x 4x 3/8 (LLV)	3 FT. MAX
*16'-0"	L8x 4x 1/2 (LLV)	4-1/2 FT. MAX

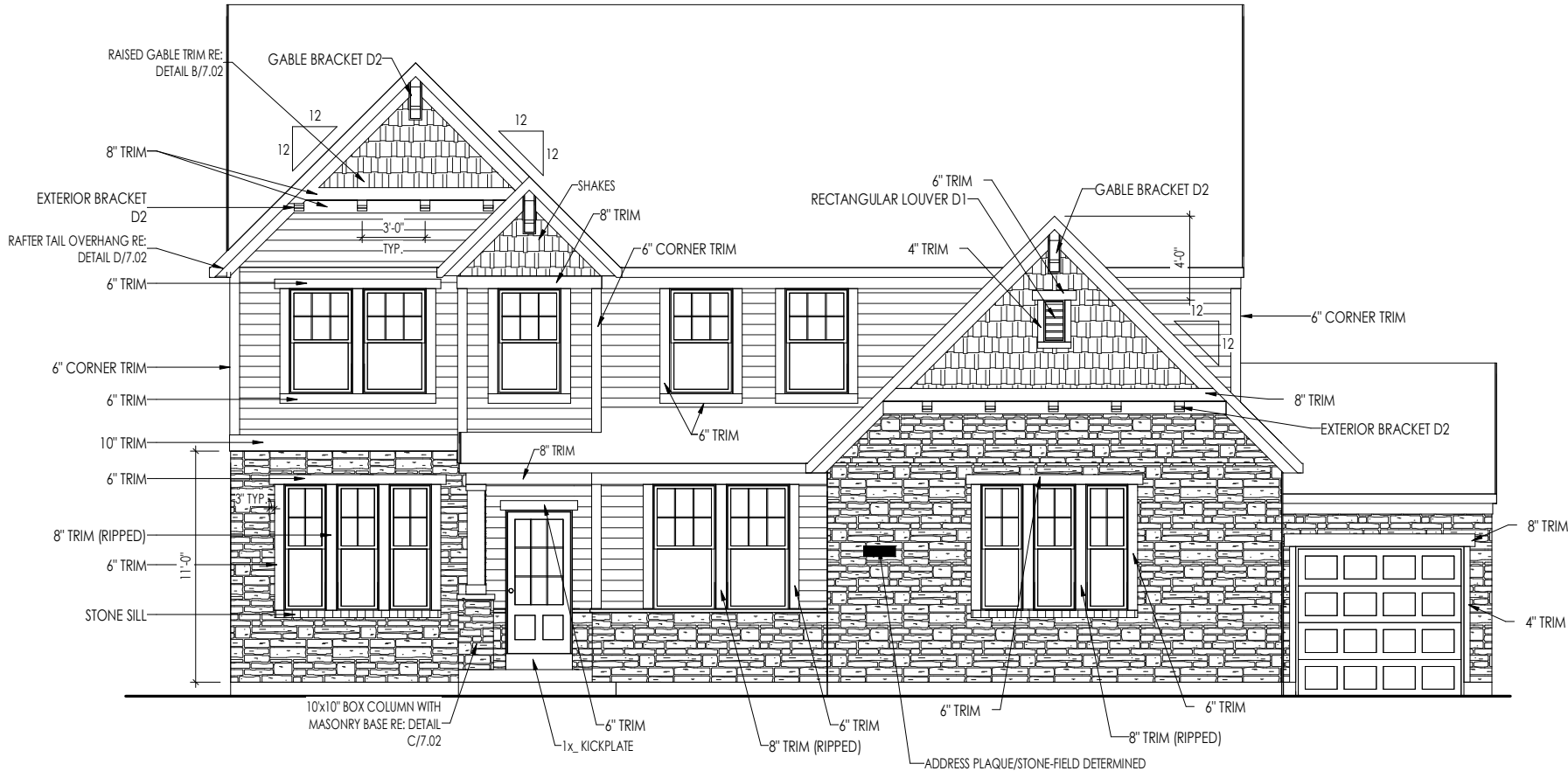
ALL LINTELS <=6' SHALL HAVE 4" MINIMUM BEARING AT EACH END.  
ALL LINTELS >=6' SHALL HAVE 8" MINIMUM BEARING AT EACH END.  
\* FASTENED TO HDR @ 1/3 SPAN POINTS THRU 1-1/2 " LONG VERTICALLY SLOTTED HOLES IN LINTEL w/ 1/2" DIA. x 3-1/2 " LONG LAG SCREWS. LOCATE LAG SCREWS @ MIDDLE OF SLOTTED HOLE & TIGHTEN SCREWS ENOUGH TO ALLOW MOVEMENT OF LINTEL.  
\*\*\*ANY LINTEL CONDITION NOT SPECIFIED ABOVE SHALL BE DESIGNED

General Notes:

1. REFER TO SHEET ON.1 FOR GENERAL NOTES.  
2. ROOFING MATERIAL PER SELECTIONS.

Key Notes:

- 1
- 2
- 3
- 4
- 5
- 6
- 7
- 8
- 9
- 10



ELEVATION F

RESIDENCE FOR:  
**MODEL**  
36874 ALAMFI ROAD  
NORTH RIDGE POINTE

Job Number: <b>NRP-0196-00</b>	Drawing Date: <b>06/03/2022</b>	Coord Name: <b>MPH</b>	Coord Phone: <b>859-578-4290</b>
House Name: <b>the BELLEVILLE</b>			Contract Drawn By: <b>EWI</b>
Born on Date: 08.19.2013			CDs Drawn By: BKW
Series:			Plan No.:



Copyright © 2022 ( 2018 ) The Drees Company. All Rights Reserved.  
6860 West Snowville Road, Suite 105, Brecksville, OH 44141-3242  
Phone: (440) 717-9670

Sheet Information

6.01  
Front Elevation  
Elevation "F"