

**General Notes:**

1. REFER TO SHEET ON.1 FOR GENERAL NOTES.

**Key Notes:**

- 401C RE: DETAIL A/4.01 FOR KITCHEN ISLAND COUNTERTOP DIMENSIONS
- 401D HOLD OUTLET HIGH ON ISLAND
- 401E OUTLET FOR RANGE HOOD/MICROWAVE HELD HIGH - OR- HARDWIRE HOOD PER SELECTIONS. VENT HOOD TO EXTERIOR
- 401F OUTLET FOR DISHWASHER LOCATED IN SINK CABINET
- 401H LOCATE WASHER TO LEFT OF DRYER
- 401J UPPER WALL CABINETS OR 16" DEEP x 56" LONG SHELF HELD AT 57" A.F.F. - REFER TO SELECTIONS
- 401K IGNITION SWITCH FOR DIRECT VENT FIREPLACE
- 401L DIRECT VENT FIREPLACE
- 401M 22-1/2"x32" ATTIC ACCESS PANEL IN CEILING
- 401T TILED SHOWER SEAT SLOPED 3/4" FOR WATER RUN-OFF OVER FLEXIBLE CHLORINATED POLYETHYLENE WATERPROOF MEMBRANE (CONTINUE OVER FRONT AND BACK OF SEAT)

**MECHANICAL LEGEND**

- |                            |  |  |
|----------------------------|--|--|
| ⊖ WALL OUTLET              | ⊙ CLG. MOUNTED LIGHT FIXT.   | ⊕ HOSE BIB                               |
| ⊖ WEATHERPROOF GFCI OUTLET | ⊙ SURFACE MOUNT DISC LIGHT OR RECESSED CEILING LIGHT, PER SPECS.                           | ⊖ SHOWER HEAD                            |
| ⊖ 220 VOLT OUTLET          | ⊙ WALL MOUNTED LIGHT FIXT.   | ⊕ GAS HOOK UP                            |
| ⊖ GFCI OUTLET              | ⊙ DOUBLE SPOTLIGHT FIXT.   | ⊕ FLOOR DRAIN                            |
| ⊖ FLOOR OUTLET             | ⊙ DIRECTIONAL CAN LIGHT  | ⊖ SMOKE DETECTOR                         |
| ⊖ COUNTER POP-UP OUTLET    | ⊙ PIN LIGHT  | ⊖ SMOKE DETECTOR/CO DETECTOR COMBINATION |
| ⊖ SINGLE POLE SWITCH       | ⊙ WALL SCONCE @ 5'-6" A.F.F.   | ⊖ EXHAUST FAN AND LIGHT COMBINATION      |
| ⊖ 3-WAY SWITCH             | ⊖ FLUORESCENT LIGHT  | ⊖ CLG. MTD. EXHAUST FAN                  |
| ⊖ 4-WAY SWITCH             | ⊖ UNDER CABINET LIGHTING   | ⊖ DATA JACK                              |
| ⊖ STAIR LIGHT              | ⊖ BLOCK, MOUNT, & SWITCH FOR FUTURE FAN/LIGHT COMBINATION (CENTER, UNLESS OTHERWISE NOTED) | ⊖ CABLE TELEVISION JACK                  |

Space for Architect Seal

RESIDENCE FOR:  
**MARKET HOME**  
4964 ELAINE COURT  
PEBBLE BROOK CROSSING

Job Number: <b>PBX7-0043-00</b>	Drawing Date: <b>6.25.2025</b>	Coord Name: <b>L. RAMLER</b>	Coord Phone: <b>8595784212</b>
------------------------------------	-----------------------------------	---------------------------------	-----------------------------------

House Name:	Drawing Scale: 1/8" = 1'-0"	Contract Drawn By: <b>NAK</b>
-------------	-----------------------------	----------------------------------

**the PARKETTE**

Born on Date: 08/30/19	CDs Drawn By: CLM	Series: <b>SERIES_NM</b>	Plan No.: <b>PLAN_NM</b>
------------------------	-------------------	-----------------------------	-----------------------------

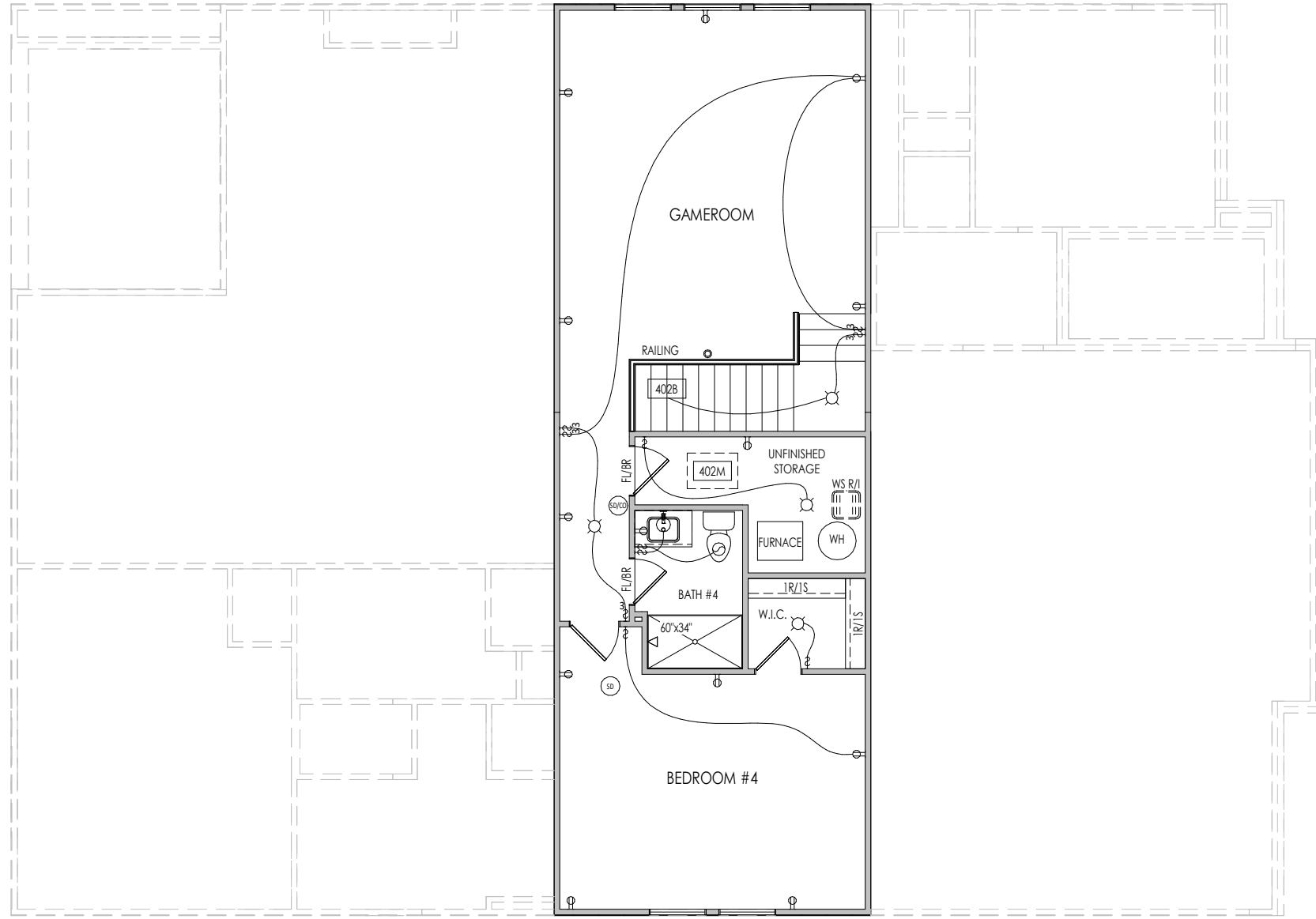


Sheet Information

**4.01**

First Floor Mechanical Plan  
Elevation "C"

6/25/2025 2:27:55 PM



**General Notes:**

1. REFER TO SHEET ON.1 FOR GENERAL NOTES.

---

**Key Notes:**

402B TO SWITCH OR LIGHT BELOW

402M 22-1/2' x 32' ATTIC ACCESS PANEL IN CEILING

---

**MECHANICAL LEGEND**

⊖ WALL OUTLET	⊙ CLG. MOUNTED LIGHT FIXT.	+ HOSE BIB
⊖ WEATHERPROOF GFCI OUTLET	⊙ SURFACE MOUNT DISC LIGHT OR RECESSED CEILING LIGHT, PER SPECS.	⚡ SHOWER HEAD
⊖ 220 VOLT OUTLET	⊙ WALL MOUNTED LIGHT FIXT.	⚡ GAS GAS HOOK UP
⊖ GFCI OUTLET	⊙ DOUBLE SPOTLIGHT FIXT.	⊕ FLOOR DRAIN
⊖ FLOOR OUTLET	⊙ DIRECTIONAL CAN LIGHT	⊖ SMOKE DETECTOR
⊖ COUNTER POP-UP OUTLET	⊙ PIN LIGHT	⊖ SMOKE DETECTOR/CO DETECTOR COMBINATION
⊖ SINGLE POLE SWITCH	⊖ WALL SCONCE @ 5'-6" A.F.F.	⊖ EXHAUST FAN AND LIGHT COMBINATION
⊖ 3-WAY SWITCH	⊖ FLUORESCENT LIGHT	⊖ CLG. MTD. EXHAUST FAN
⊖ 4-WAY SWITCH	⊖ UNDER CABINET LIGHTING	⊖ DATA JACK
⊖ STAIR LIGHT		⊖ CABLE TELEVISION JACK
⊖ BLOCK, MOUNT, & SWITCH FOR FUTURE FAN/LIGHT COMBINATION (CENTER, UNLESS OTHERWISE NOTED)		

Space for Architect Seal

RESIDENCE FOR:  
**MARKET HOME**  
 4964 ELAINE COURT  
 PEBBLE BROOK CROSSING

Job Number: <b>PBX7-0043-00</b>	Drawing Date: <b>6.25.2025</b>	Coord Name: <b>L. RAMLER</b>	Coord Phone: <b>8595784212</b>
House Name: <b>the PARKETTE</b>			Contract Drawn By: <b>NAK</b>
Born on Date: 08/30/19			CDs Drawn By: CLM
Series: <b>SERIES_NM</b>			Plan No.: <b>PLAN_NM</b>

Copyright © 2023 (2024) The Drees Company. All Rights Reserved.  
 900 East 96th Street, Suite 100, Indianapolis, IN 46240  
 Phone: [317] 347-7300

**4.02**  
 Second Floor Mechanical Plan  
 Elevation "C"

Sheet Information

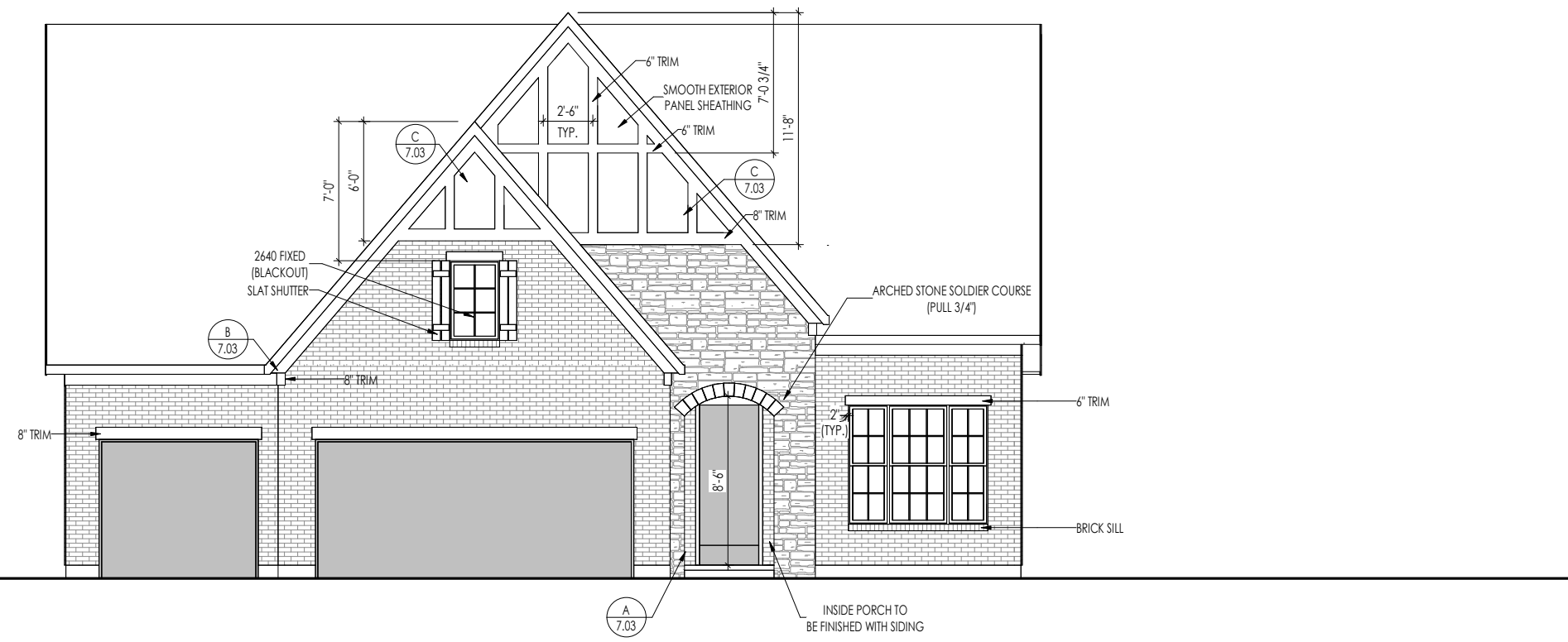
I:\Contract\MI\DWEST\INDIANAPOLIS\BIBX7\BIBX7-0043-00\BIBX7-0043-00.rvt

6/25/2025 2:27:55 PM

<b>TYPICAL TRIM:</b>
6" FASCIA/ 8" w/HARDIE SOFFIT (ALL SIDES)
8" FRIEZE (FRONT ONLY, UNLESS OTHERWISE NOTED)

- General Notes:
- REFER TO SHEET ON.1 FOR GENERAL NOTES.
  - ROOFING MATERIAL PER SELECTIONS.
  - CONTACT M&K ENGINEERING FOR HEADER SIZE/BRICK SUPPORT IF GRADE DROPS AND THE AMOUNT OF BRICK OVER GARAGE DOOR SHOWN ON CURRENT ELEVATION IS NO LONGER ACCURATE
  - REFER TO SHEET S-0 FOR STRUCTURAL DETAILS AND INFORMATION
  - FRONT AND GARAGE DOORS PER SELECTIONS

Key Notes:



**ELEVATION "C"**

Space for Architect Seal

RESIDENCE FOR:  
**MARKET HOME**  
 4964 ELAINE COURT  
 PEBBLE BROOK CROSSING

Job Number: <b>PBX7-0043-00</b>	Drawing Date: <b>6.25.2025</b>	Coord Name: <b>L. RAMLER</b>	Coord Phone: <b>8595784212</b>
House Name:			Contract Drawn By: <b>NAK</b>
Drawing Scale: 1/8" = 1'0"			Series: <b>SERIES_NM</b>
Born on Date: 08/30/19			Plan No.: <b>PLAN_NM</b>
CDs Drawn By: CLM			

**the PARKETTE**



Sheet Information

**6.01**  
 Front Elevation  
 Elevation "C"

I:\Contracts\INDWEST\INDIANAPOLIS\PEBBLEBROOK\PEBBLEBROOK\0043-00\PEBBLEBROOK.dwg

6/25/2025 2:27:55 PM