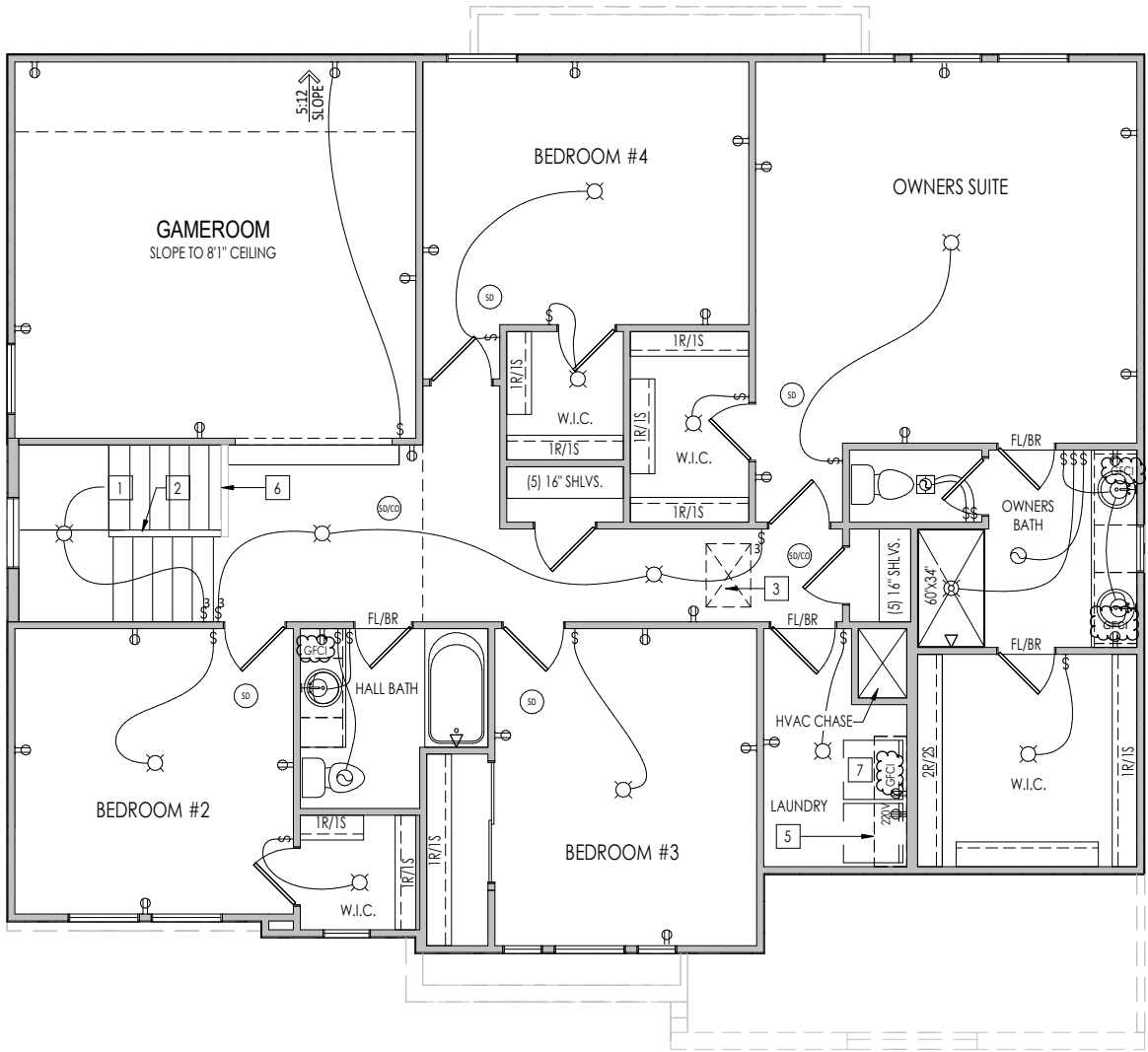




# 4.01

First Floor Mechanical  
Elevation "B"



REISSUED: 06/17/2024

General Notes:

1. REFER TO SHEET ON.1 FOR GENERAL NOTES.

Key Notes:

1

TO LIGHT OR SWITCH BELOW

2

36" HIGH WALL WITH WOOD CAP

3

22-1/2"x32" ATTIC ACCESS

4

5

5'6" SHELF @ 5'7" A.F.F.

6

42" HIGH WALL WITH WOOD CAP

7

WASHER TO LEFT OF DRYER

8

--

9

--

10

--

11

--

12

--

13

--

14

--

15

--

MECHANICAL LEGEND

◀

PHONE JACK

⊕

WALL OUTLET

⊕

WEATHERPROOF GFCI OUTLET

⊕

220 VOLT OUTLET

⊕

GFCI OUTLET

⊕

FLOOR OUTLET

⊕

CABLE TELEVISION JACK

↔

SINGLE POLE SWITCH

↔

3-WAY SWITCH

↔

4-WAY SWITCH

⊕

BLOCK, MOUNT, & SWITCH FOR FUTURE FAN/LIGHT COMBINATION (CENTER, UNLESS OTHERWISE NOTED)

⊙

CLG. MOUNTED LIGHT FIXT.

○

SURFACE MOUNT DISC LIGHT OR RECESSED CEILING LIGHT, PER SPECS.

⊙

WALL MOUNTED LIGHT FIXT.

⊙

DOUBLE SPOTLIGHT FIXT.

⊙

DIRECTIONAL CAN LIGHT

⊙

PIN LIGHT

⊙

WALL SCONCE @ 5'-6" A.F.F.

⊙

FLUORESCENT LIGHT

⊙

UNDER CABINET LIGHTING

⬆

STAIR LIGHT

+

HOSE BIB

⬆

SHOWER HEAD

⬆

GAS GAS HOOK UP

⬆

FLOOR DRAIN

⬆

SMOKE DETECTOR

⬆

CO DETECTOR

⬆

SMOKE DETECTOR/CO DETECTOR COMBINATION

⬆

EXHAUST FAN AND LIGHT COMBINATION

⬆

CLG. MTD. EXHAUST FAN

RESIDENCE FOR:

MARKET

TBD

PINE LAKES CROSSING

Job Number:

PLCE-0062-00

Drawing Date:

4/13/2023

Coord Name:

MPH

Coord Phone:

859-578-4290

House Name:

the BELLEVILLE

Drawing Scale:

1/8" = 1'0"

Contract Drawn By:

EWI

Series:

Plan No.:

Born on Date:

08.19.2013

CDs Drawn By:

BKW

Sheet Information

4.02

Second Floor Mechanical Plan

Elevation "B"

Drees

HOMES

Copyright © 2022 [ 2018 ] The Drees Company. All Rights Reserved.  
6860 West Snowville Road, Suite 105, Brecksville, OH 44141-3242  
Phone: [440] 717-9670

BRICK VENEER LINTEL SCHEDULE

SPAN	STEEL ANGLE SIZE	HEIGHT OF VENEER ABOVE LINTEL
Up to 3'-6"	L3-1/2 x3- 1/2 x1/4	20 FT. MAX
Up to 6'-0"	L5x 3- 1/2x 5/16 (LLV)	20 FT. MAX
Up to 8'-0"	L6x 3- 1/2x 3/8 (LLV)	20 FT. MAX
9'-0"	L7x 4x 3/8 (LLV)	12 FT. MAX
*16'-0"	L7x 4x 3/8 (LLV)	3 FT. MAX
*16'-0"	L8x 4x 1/2 (LLV)	4-1/2 FT. MAX

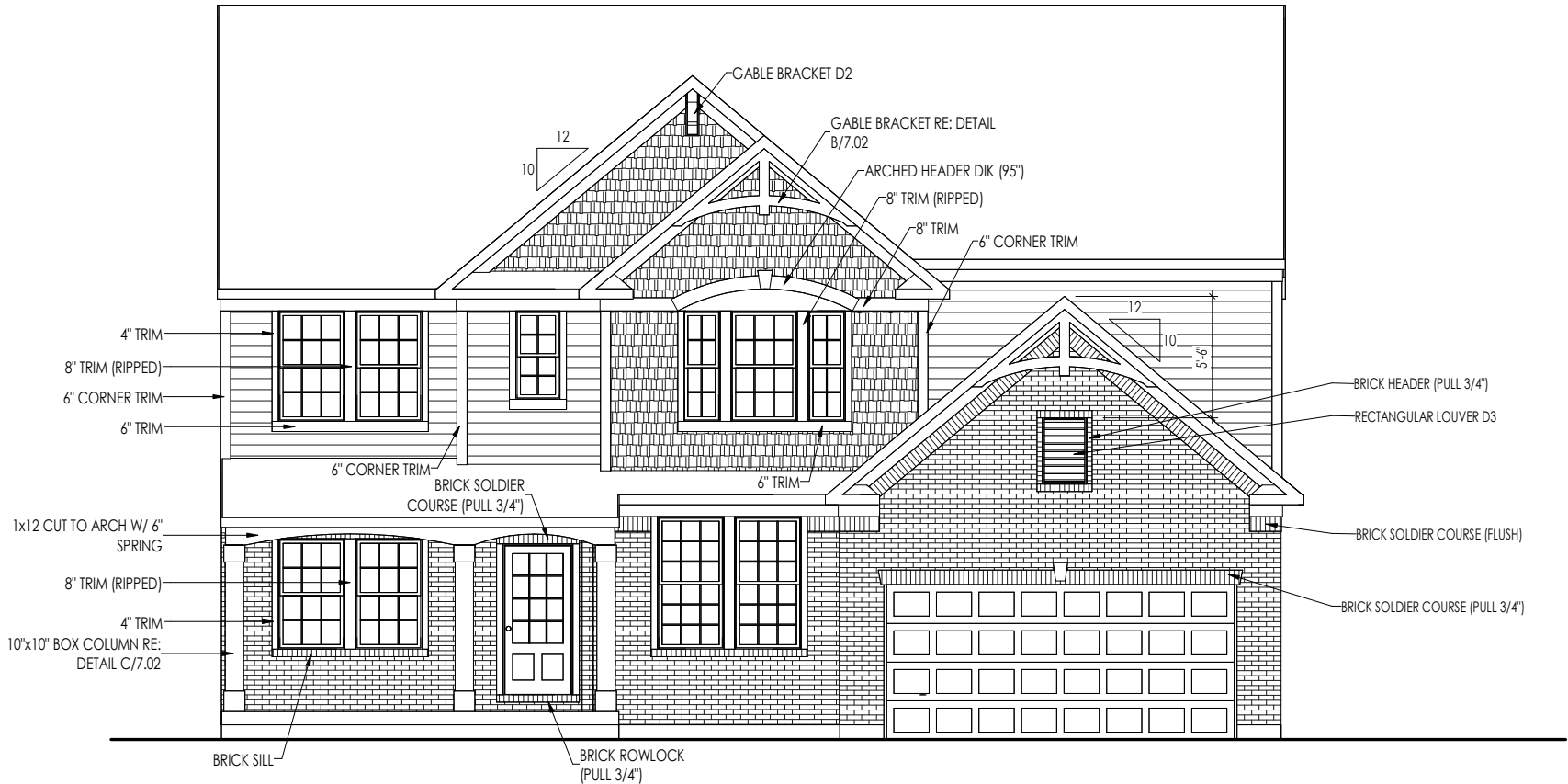
ALL LINTELS <=6' SHALL HAVE 4" MINIMUM BEARING AT EACH END.  
ALL LINTELS >=6' SHALL HAVE 8" MINIMUM BEARING AT EACH END.  
\* FASTENED TO HDR @ 1/3 SPAN POINTS THRU 1-1/2 " LONG VERTICALLY SLOTTED HOLES IN LINTEL w/ 1/2" DIA. x 3-1/2 " LONG LAG SCREWS. LOCATE LAG SCREWS @ MIDDLE OF SLOTTED HOLE & TIGHTEN SCREWS ENOUGH TO ALLOW MOVEMENT OF LINTEL.  
\*\*\*ANY LINTEL CONDITION NOT SPECIFIED ABOVE SHALL BE DESIGNED

General Notes:

1. REFER TO SHEET ON.1 FOR GENERAL NOTES.  
2. ROOFING MATERIAL PER SELECTIONS.

Key Notes:

- 1
- 2
- 3
- 4
- 5
- 6
- 7
- 8
- 9
- 10



ELEVATION B

NOTE: STONE OR BRICK TO GRADE (BRICK/STONE LEDGE) - FIELD VERIFY DROPPED LOCATIONS

REISSUED: 05/09/2024

RESIDENCE FOR:

MARKET

TBD

PINE LAKES CROSSING

Job Number: PLCE-0062-00	Drawing Date: 4/13/2023	Coord Name: MPH	Coord Phone: 859-578-4290
House Name: the BELLEVILLE			Contract Drawn By: EWT
Born on Date: 08.19.2013			Series:
CDs Drawn By: BKW			Plan No.:



Copyright © 2022 ( 2018 ) The Drees Company. All Rights Reserved.  
6860 West Snowville Road, Suite 105, Brecksville, OH 44141-3242  
Phone: (440) 717-9670

Sheet Information

6.01  
Front Elevation  
Elevation "B"