

General Notes:

1. REFER TO SHEET ON.1 FOR GENERAL NOTES.

Key Notes:

1	TO SWITCH OR LIGHT BELOW
2	TO SWITCH OR LIGHT ABOVE
3	OUTLET FOR RANGE HOOD/MICROWAVE HELD HIGH - VENT TO EXTERIOR
4	OUTLET FOR DISHWASHER & SWITCH FOR DISPOSAL LOCATED IN SINK CABINET
5	
6	
7	
8	
9	
10	

MECHANICAL LEGEND

◀ PHONE JACK	⊗ CLG. MOUNTED LIGHT FIXT.	■ STAIR LIGHT
⊕ WALL OUTLET	○ SURFACE MOUNT DISC LIGHT OR RECESSED CEILING LIGHT, PER SPECS.	+ HOSE BIB
⊖ WEATHERPROOF OUTLET	○ WALL MOUNTED LIGHT FIXT.	△ SHOWER HEAD
⊖ 220 VOLT OUTLET	⊗ DOUBLE SPOTLIGHT FIXT.	⊕ GAS GAS HOOK UP
⊖ GROUND FAULT OUTLET	⊗ DIRECTIONAL CAN LIGHT	⊕ FLOOR DRAIN
⊕ FLOOR OUTLET	⊙ PIN LIGHT	⊕ SMOKE DETECTOR
⊕ CABLE TELEVISION JACK	⊗ WALL SCONCE @ 5'-6" A.F.F.	⊕ CO DETECTOR
⊕ SINGLE POLE SWITCH	⊕ FLUORESCENT LIGHT	⊕ SMOKE DETECTOR/CO DETECTOR COMBINATION
⊕ 3-WAY SWITCH	⊕ UNDER CABINET LIGHTING	⊕ EXHAUST FAN AND LIGHT COMBINATION
⊕ 4-WAY SWITCH		⊕ CLG. MTD. EXHAUST FAN
⊕ BLOCK, MOUNT, & SWITCH FOR FUTURE FAN/LIGHT COMBINATION (CENTER, UNLESS OTHERWISE NOTED)		

Space for Architect Seal

RESIDENCE FOR:

MODEL HOME

TBD FIRETHORNE DRIVE

CLEVELAND OFFSITE

Job Number:	Drawing Date:	Coord Name:	Coord Phone:
COS-0140-00	06/26/2020	MELISSA P.	859-578-4290
House Name:	Drawing Scale: 1/8" = 1'0"	Contract Drawn By:	
the BUCHANAN		SSP	
		Series:	SERIES II
		Plan No.:	N/A
Born on Date:	08/27/2010	CDs Drawn By:	SSP

Drees

HOMES

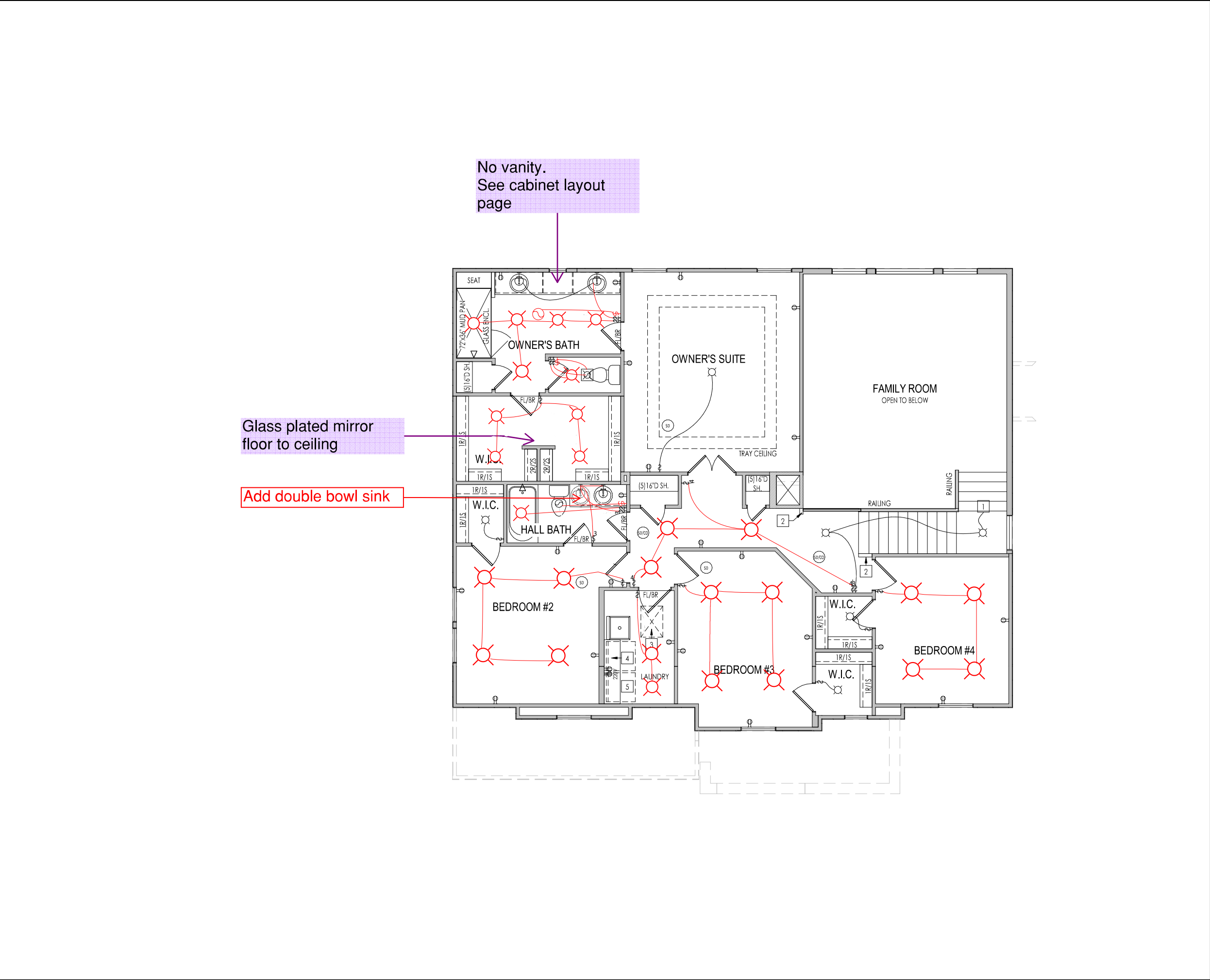
Copyright © 2010 [2019] The Drees Company. All Rights Reserved.
6860 West Snowville Road, Suite 105, Brecksville, OH 44141-3242
Phone: (440) 717-9670

Sheet Information

4.01

First Floor Mechanical Plan

Elevation "M"



General Notes:

1. REFER TO SHEET ON.1 FOR GENERAL NOTES.

Key Notes:

1

TO LIGHT OR SWITCH BELOW

2

42" HIGH WALL WITH WOOD CAP

3

22-1/2"x32" ATTIC ACCESS

4

5/8" SHELF @ 57" A.F.F.

5

WASHER TO LEFT OF DRYER

6

7

8

--

9

--

10

--

MECHANICAL LEGEND

◀

PHONE JACK

⊖

WALL OUTLET

⊖

WEATHERPROOF OUTLET

⊖

220 VOLT OUTLET

⊖

GROUND FAULT OUTLET

⊖

FLOOR OUTLET

⊖

CABLE TELEVISION JACK

⊖

SINGLE POLE SWITCH

⊖

3-WAY SWITCH

⊖

4-WAY SWITCH

⊖

BLOCK, MOUNT, & SWITCH FOR FUTURE FAN/LIGHT COMBINATION (CENTER, UNLESS OTHERWISE NOTED)

○

CLG. MOUNTED LIGHT FIXT.

○

SURFACE MOUNT DISC LIGHT OR RECESSED CEILING LIGHT, PER SPECS.

○

WALL MOUNTED LIGHT FIXT.

○

DOUBLE SPOTLIGHT FIXT.

○

DIRECTIONAL CAN LIGHT

○

PIN LIGHT

○

WALL SCONCE @ 5'-6" A.F.F.

○

FLUORESCENT LIGHT

○

UNDER CABINET LIGHTING

■

STAIR LIGHT

+

HOSE BIB

△

SHOWER HEAD

⊖

GAS HOOK UP

⊖

FLOOR DRAIN

⊖

SMOKE DETECTOR

⊖

CO DETECTOR

⊖

SMOKE DETECTOR/CO DETECTOR COMBINATION

⊖

EXHAUST FAN AND LIGHT COMBINATION

⊖

CLG. MTD. EXHAUST FAN

Space for Architect Seal

RESIDENCE FOR:
MODEL HOME
TBD FIRETHORNE DRIVE
CLEVELAND OFFSITE

Job Number:
COS-0140-00

Drawing Date:
06/26/2020

Coord Name:
MELISSA P.

Coord Phone:
859-578-4290

House Name:
the BUCHANAN

Drawing Scale: 1/8" = 1'0"

Contract Drawn By:
SSP

Series:
SERIES II

Plan No.:
N/A

Born on Date:
08/27/2010

CDs Drawn By:
SSP

Drees

HOMES

Copyright © 2010 [2019] The Drees Company. All Rights Reserved.
6860 West Snowville Road, Suite 105, Brecksville, OH 44141-3242
Phone: [440] 717-9670

Sheet Information

4.02

Second Floor Mechanical Plan
Elevation "M"

TYPICAL TRIM:
6" FASCIA (ALL SIDES)
8" FRIEZE (FRONT ONLY, UNLESS OTHERWISE NOTED)

General Notes:

1. REFER TO SHEET ON.1 FOR GENERAL NOTES.
2. ROOFING MATERIAL PER SELECTIONS.

Key Notes:

- 1 --
2 --
3 --
4 --
5 --

BRICK and STONE LINTEL SCHEDULE

	SPAN	36" HIGH	48" HIGH	LINTEL SIZE	WINDOW ABOVE
*BRICK	Up to 6'-0"	---	----	L3 1/2 x 3 1/2 x 1/4	----
	Up to 8'-3"	---	----	L5 x 3 1/2 x 5/16	----
	Up to 9'-3"	---	----	L6 x 4 x 5/16	L7 x 4 x 3/8
	Up to 16'-3"	L7 x 4 x 3/8	L8 x 4 x 1/2	L8 x 4 x 1/2	**per Design
*STONE	Up to 6'-0"	---	----	L4 x 3 1/2 x 1/4	----
	Up to 8'-3"	---	----	L5 x 3 1/2 x 5/16	----
	Up to 9'-3"	---	L6 x 4 x 3/8	L7 x 4 x 3/8	**per Design
	Up to 16'-3"	---	L8 x 4 x 1/2	**per Design	**per Design

All Lintels: 4" Minimum bearing required each end
*Brick is based on 40psf and Stone is based on 60psf
** Any Lintels not described by the above parameters shall be specifically designed.

Space for Architect Seal

RESIDENCE FOR:
MODEL HOME
TBD FIRETHORNE DRIVE
CLEVELAND OFFSITE

Job Number: COS-0140-00	Drawing Date: 06/26/2020	Coord Name: MELISSA P.	Coord Phone: 859-578-4290
House Name: the BUCHANAN			Contract Drawn By: SSP
			Series: SERIES II
Born on Date: 08/27/2010			CDs Drawn By: SSP N/A

Drees
HOMESSM

Copyright © 2010 (2019) The Drees Company. All Rights Reserved.
6860 West Snowville Road, Suite 105, Brecksville, OH 44141-3242
Phone: (440) 717-9670

Sheet Information

6.01
Front Elevation
Elevation "M"

