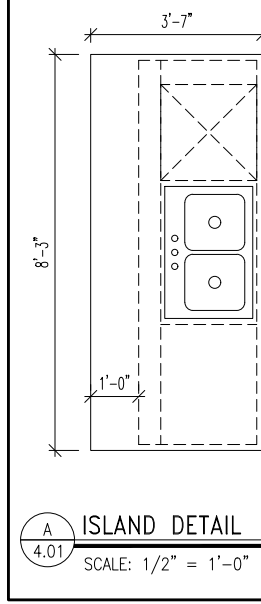
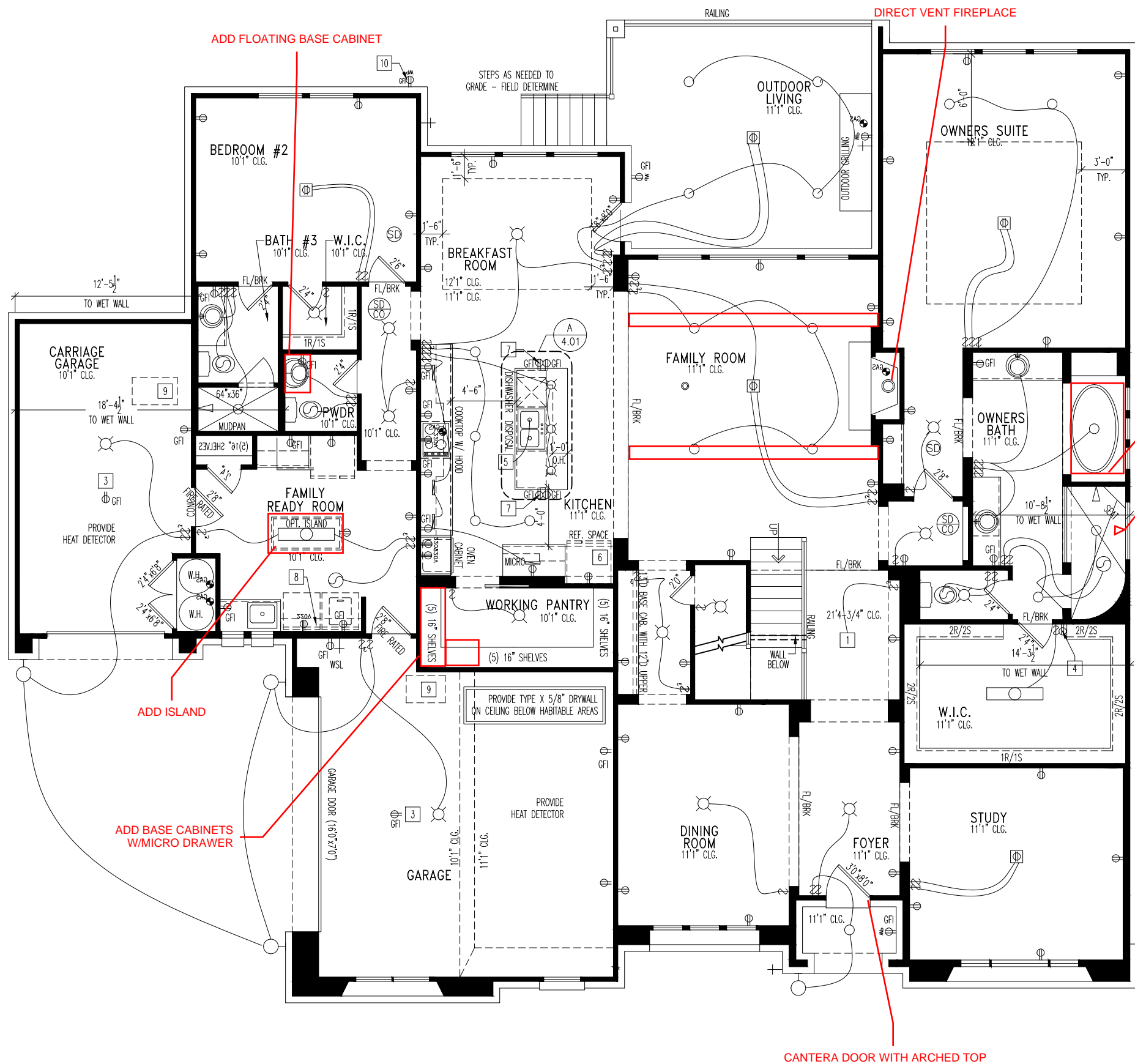


CITY OF LAKEWAY BUILDING ORDINANCE - SECTION 24.02.405

2015 INTERNATIONAL RESIDENTIAL CODE
2015 UNIFORM PLUMBING CODE
2015 UNIFORM MECHANICAL CODE
2014 NATIONAL ELECTRIC CODE
2015 INTERNATIONAL ENERGY CODE
2015 INTERNATIONAL FIRE CODE
2015 INTERNATIONAL GAS CODE





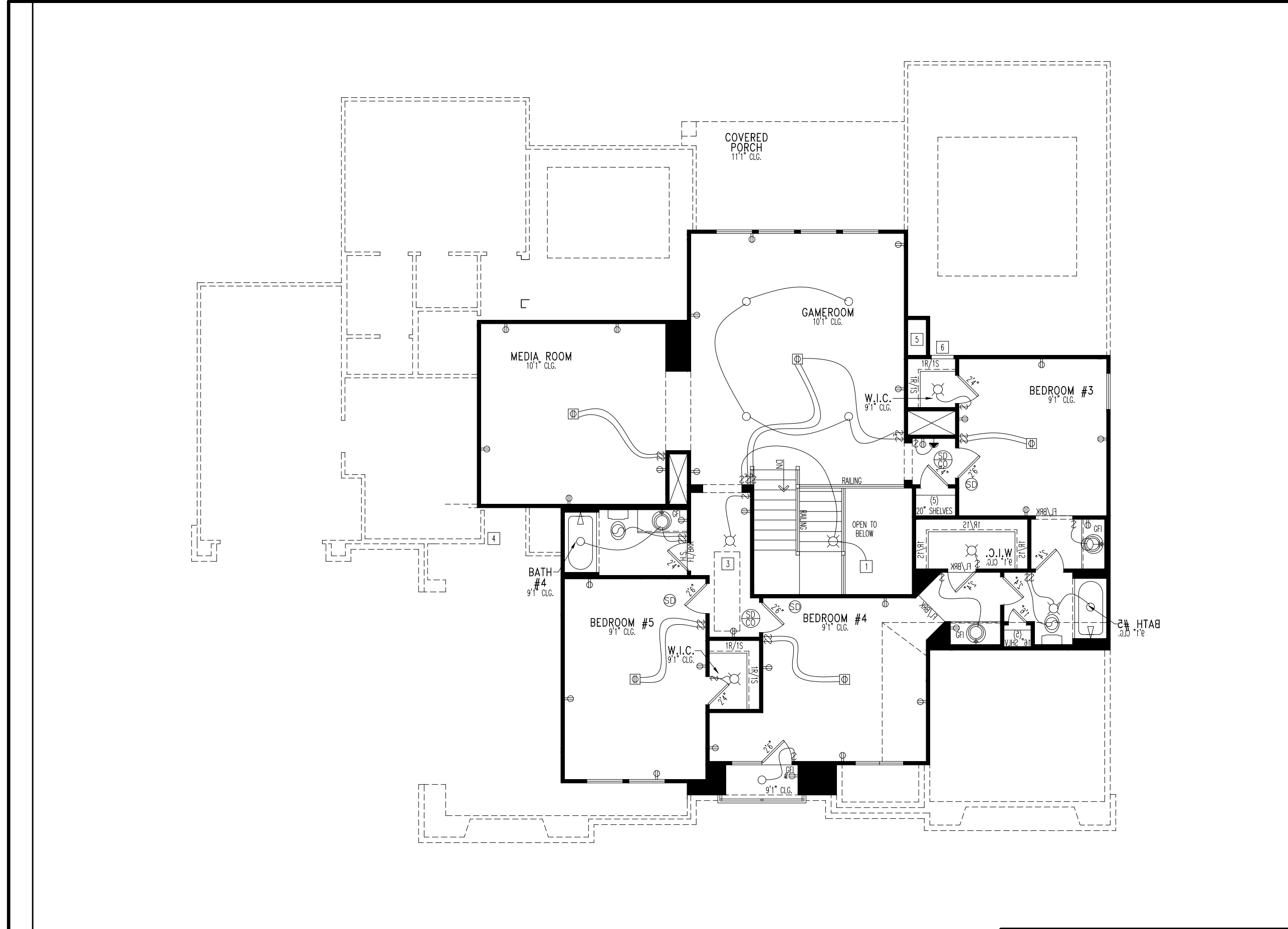
General Notes

Key Notes

Mechanical Legend

SOLID CORE DOORS AT 1ST AND 2ND FLOORS

Subdivision:	LAKEWAY HIGHLANDS	Sheet No.
Job #:	RHLB-0029-F	4.01
Customer Name:	MARKET	
Job Address:	904 BRISTOL CREEK BEND	



General Notes		
--		
Key Notes		
1 TO LIGHT OR SWITCH BELOW		
2 36" HIGH HALF WALL		
3 PULL DOWN STAIRS W/ LIGHT, SWITCH AND OUTLET (25 1/2" x 54")		
4 ATTIC ACCESS W/ LIGHT, SWITCH & OUTLET (22 1/2" x 32")		
5 CHASE FOR FIREPLACE FLUE		
6 ATTIC ACCESS WALL PANEL W/ LIGHT, SWITCH & OUTLET		
7 --		
8 --		
9 --		
10 --		
Mechanical Legend		
<div><div><div>PHONE JACK</div><div>HOME OFFICE OUTLET</div><div>DATA OUTLET</div><div>PROJECTOR ROUGH-IN</div><div>ENTERTAINMENT CENTER OUTLET</div><div>WALL OUTLET</div><div>WEATHERPROOF OUTLET</div><div>220 OUTLET</div><div>GROUND FAULT OUTLET</div><div>FLOOR OUTLET</div><div>CABLE TELEVISION JACK</div><div>SINGLE POLE SWITCH</div><div>3-WAY SWITCH</div><div>4-WAY SWITCH</div><div>BLOCK, MOUNT, & SWITCH FOR FUTURE FAN/LIGHT COMBINATION (CENTER, UNLESS OTHERWISE NOTED)</div><div>EXHAUST FAN AND LIGHT COMBINATION</div><div>FLOOR DRAIN</div></div><div><div>FLUORESCENT LIGHT</div><div>UNDER CABINET LIGHTING</div><div>CLG. MOUNTED LIGHT FIXT.</div><div>WALL MOUNTED LIGHT FIXT.</div><div>SURFACE MOUNT DISC LIGHT OR RECESSED CEILING LIGHT, PER SPECS.</div><div>DOUBLE SPOTLIGHT FIXT.</div><div>DIRECTIONAL CAN LIGHT</div><div>PIN LIGHT</div><div>WALL SCONCE @ 5'-6" A.F.F.</div><div>STAIR LIGHT</div><div>CLG. MTD. EXHAUST FAN</div><div>WALL MTD. EXHAUST FAN</div><div>SMOKE DETECTOR</div><div>HOSE BIB</div><div>SHOWER HEAD</div><div>GAS</div><div>CO DETECTOR</div><div>SMOKE DETECTOR/CO DETECTOR COMBINATION</div></div></div>		<div><div>SOLID CORE DOORS AT 1ST AND 2ND FLOORS</div></div>
Subdivision:	LAKEWAY HIGHLANDS	Sheet No.
Job #:	RHLB-0029-F	4.02
Customer Name:	MARKET	
Job Address:	904 BRISTOL CREEK BEND	



DREES CUSTOM HOMES L.P.
7300 RR 2222 BUILDING 2, SUITE 250 AUSTIN, TX 78730-3233
(512) 241-7100
Copyright © 2013, (2013) The Drees Company. All Rights Reserved. No portion of this material may be reproduced in any form or by any means, including photocopying, without the express written permission of the Drees Company. The Drees Company will vigorously prosecute any unauthorized use of this material.

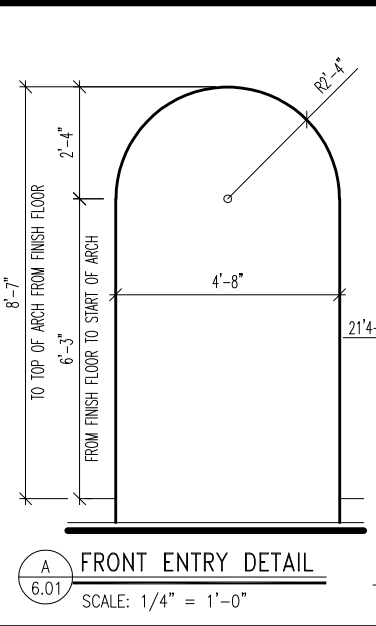
House:
COLINAS II
Series:
Plan No.:
5161

Std. Drawn By: PDKF
Std. Chk. By: ARC
Std. Date: 04/24/2013
Date of Last Rev:

Sheet Description: **SECOND FLOOR MECHANICAL PLAN ELEVATION "A"**
SCALE: 1/8" = 1'-0"

Contract Drawn By:
Phone #:
Coordinator's Name: LISA
Coordinator's Phone #: 859-578-4333
RHLB-0029-F Colinas II.dwg Jun 01, 2021 - 11:50am

Original Site Specific Dwg. & Effective Change Order Date:
12-30-20



FRONT ENTRY DETAIL
SCALE: 1/4" = 1'-0"



NOTE:
6" FASCIA
4" FRIEZE

EXTERIOR MATERIALS
60% STONE
40% STUCCO



General Notes

- ROOFING MATERIALS PER SPECIFICATIONS

Key Notes

1

18"x42" IRONWORK PER MANUFACTURER'S SPECIFICATIONS

2

STUCCO FINISH SYSTEM

3

4

STUCCO SILL

5

18"x18" IRONWORK PER MANUFACTURER'S SPECIFICATIONS

6

STUCCO D7 (RE: STUCCO SCHEDULE FOR DETAILS)

7

STUCCO D7 WITH 30" RADIUS (RE: STUCCO SCHEDULE FOR DETAILS)

8

--

9

10

11

BRICK and STONE LINTEL SCHEDULE

	SPAN	36" HIGH	48" HIGH	LINTEL SIZE	WINDOW ABOVE
*BRICK	Up to 6'-0"	---	---	L3½ x 3½ x ¼	---
	Up to 8'-3"	---	---	L5 x 3½ x ⅝	---
	Up to 9'-3"	---	---	L6 x 4 x ⅝	L7 x 4 x ⅝
	Up to 16'-3"	L7 x 4 x ⅝	L8 x 4 x ½	L8 x 4 x ½	**per Design
*STONE	Up to 6'-0"	---	---	L4 x 3½ x ¼	---
	Up to 8'-3"	---	---	L5 x 3½ x ⅝	---
	Up to 9'-3"	---	L6 x 4 x ⅝	L7 x 4 x ⅝	**per Design
	Up to 16'-3"	---	L8 x 4 x ½	**per Design	**per Design

All Lintels: 4" Minimum bearing required each end

* Brick is based on 40psf and Stone is based on 60psf

** Any lintels not described by the above parameters shall be specifically designed.

Subdivision:

LAKEWAY HIGHLANDS

Job #:

RHLB-0029-F

Customer Name:

MARKET

Job Address:

904 BRISTOL CREEK BEND

Sheet No.

6.01

Drees

CUSTOM HOMESSM

Drees Custom Homes L.P.

11305 FOUR POINTS DRIVE BUILDING 1, SUITE 150 AUSTIN, TX 78726

(512) 241-7100

Copyright © 2013, (2013) The Drees Company. All Rights Reserved. No portion of this material may be reproduced in any form or by any means, including photocopying, without the express written permission of the Drees Company. The Drees Company will vigorously prosecute any unauthorized use of this material.

House:

COLINAS II

Series:

Plan No.: 5161

Std. Drawn By: PDKF

Std. Chk. By: ARC

Std. Date: 04/24/2013

Date of Last Rev: -

Sheet Description:

FRONT & REAR ELEVATIONS
ELEVATION "A"

Contract Drawn By:

Phone #:

Coordinator's Name: LISA

Coordinator's Phone #: 859-578-4333

RHLB-0029-F Colinas II.dwg Aug 11, 2021 - 9:43am

Original Site Specific Dwg. & Effective Change Order Date:

12-30-20