

General Notes:

1. REFER TO SHEET 0N.1 FOR GENERAL NOTES.

Key Notes:

- CATTLE-RAIL AT STAIRS RE: SPECIFICATION MANUAL FOR DETAILS
-
-
-
-
-
-
-
-
-

MECHANICAL LEGEND

- | | | |
|--|--|--|
| ◀ DATA JACK | CLG. MOUNTED LIGHT FIXT. | STAIR LIGHT |
| WALL OUTLET | SURFACE MOUNT DISC LIGHT OR RECESSED CEILING LIGHT, PER SPECS. | HOSE BIB |
| WEATHERPROOF GFCI OUTLET | WALL MOUNTED LIGHT FIXT. | SHOWER HEAD |
| 220 VOLT OUTLET | DOUBLE SPOTLIGHT FIXT. | GAS HOOK UP |
| GFCI OUTLET | DIRECTIONAL CAN LIGHT | FLOOR DRAIN |
| FLOOR OUTLET | PIN LIGHT | SMOKE DETECTOR |
| CABLE TELEVISION JACK | WALL SCONCE @ 5'-6" A.F.F. | SMOKE DETECTOR/CO DETECTOR COMBINATION |
| SINGLE POLE SWITCH | FLUORESCENT LIGHT | EXHAUST FAN AND LIGHT COMBINATION |
| 3-WAY SWITCH | UNDER CABINET LIGHTING | CLG. MTD. EXHAUST FAN |
| 4-WAY SWITCH | | |
| BLOCK, MOUNT, & SWITCH FOR FUTURE FAN/LIGHT COMBINATION (CENTER, UNLESS OTHERWISE NOTED) | | |

Space for Architect Seal

RESIDENCE FOR:
Model Home
1726 LEDGESTONE WAY
RIVERS POINTE ESTATES 100

Job Number: RPEL-0124-00	Drawing Date: 02/08/24	Coord Name: L RAMLER	Coord Phone: 8595784212
House Name: the CRESTWOOD			Contract Drawn By: KEB
Born on Date: 04/08/2016			Series: III
CDs Drawn By: BLC			Plan No.: PLAN_NM

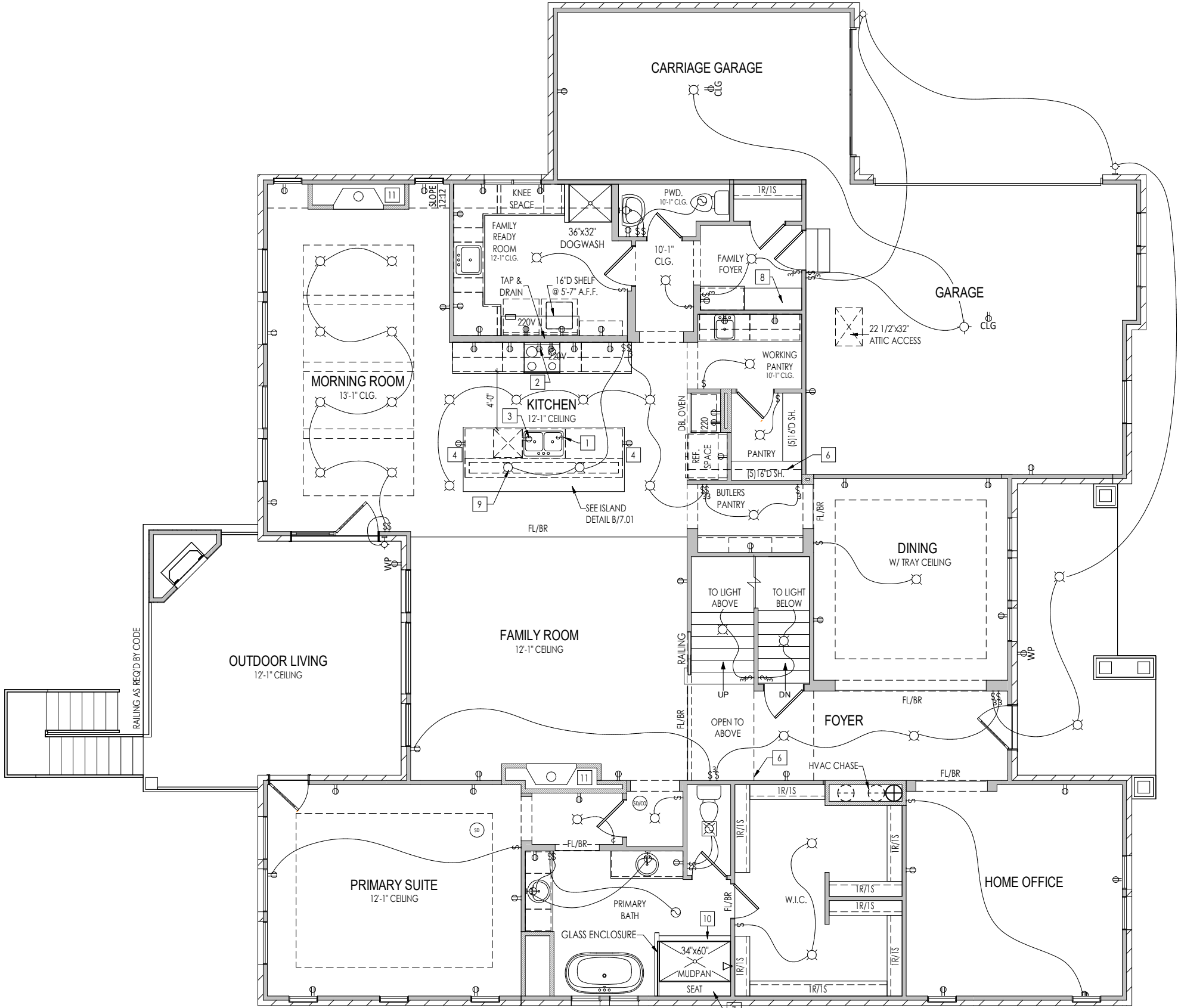
Drees
HOMESSM

Copyright © 2016 (2021) The Drees Company. All Rights Reserved.
211 Grandview Drive, Fort Mitchell, KY 41017
Phone: [859] 578-4200

Sheet Information

1.03
Lower Level Mechanical Plan
Elevation "J"

PROVIDE PASSIVE RADON
SYSTEM AND VENTTHROUGH ROOF.
OUTLET REQUIRED IN ATTIC



General Notes:

1. REFER TO SHEET ON.1 FOR GENERAL NOTES.

Key Notes:

- DISPOSAL SWITCH IN SINK CABINET
- OUTLET FOR RANGE HOOD/MICROWAVE HELD HIGH/ VENT TO EXTERIOR
- OUTLET FOR DISHWASHER LOCATED IN SINK CABINET
- HOLD OUTLET HIGH ON ISLAND
- SWITCHES FOR BLOWER UNIT WITH DIRECT VENT FIREPLACE ONLY
- OUTLINE OF SECOND FLOOR ABOVE
- TILED SHOWER SEAT SLOPED 3/4" FOR WATER RUN-OFF OVER FLEXIBLE CHLORINATED POLYETHYLENE WATERPROOF MEMBRANE (CONTINUE OVER FRONT AND BACK OF SEAT)
- BENCH SEAT: SEE STANDARD DETAIL F/D2.2 FOR MORE INFO.
- (2) PENDANT LIGHTS ABOVE KITCHEN ISLAND ON ONE SWITCH
- 4-1/2" HIGH MUDPAN CURB
- DIRECT VENT FIREPLACE - RE: SELECTION SHEET FOR MODEL AND DETAIL SHEET F-1 FOR FRAMING INFO

MECHANICAL LEGEND

- | | | |
|--|--|--|
| DATA JACK | CLG. MOUNTED LIGHT FIXT. | STAIR LIGHT |
| WALL OUTLET | SURFACE MOUNT DISC LIGHT OR RECESSED CEILING LIGHT, PER SPECS. | HOSE BIB |
| WEATHERPROOF GFCI OUTLET | WALL MOUNTED LIGHT FIXT. | SHOWER HEAD |
| 220 VOLT OUTLET | DOUBLE SPOTLIGHT FIXT. | GAS HOOK UP |
| GFCI OUTLET | DIRECTIONAL CAN LIGHT | FLOOR DRAIN |
| FLOOR OUTLET | PIN LIGHT | SMOKE DETECTOR |
| CABLE TELEVISION JACK | WALL SCONCE @ 5'-6" A.F.F. | SMOKE DETECTOR/CO DETECTOR COMBINATION |
| SINGLE POLE SWITCH | FLUORESCENT LIGHT | EXHAUST FAN AND LIGHT COMBINATION |
| 3-WAY SWITCH | UNDER CABINET LIGHTING | CLG. MTD. EXHAUST FAN |
| 4-WAY SWITCH | | |
| BLOCK, MOUNT, & SWITCH FOR FUTURE FAN/LIGHT COMBINATION (CENTER, UNLESS OTHERWISE NOTED) | | |

Space for Architect Seal

RESIDENCE FOR:
Model Home
1726 LEDGESTONE WAY
RIVERS POINTE ESTATES 100

Job Number: RPEL-0124-00	Drawing Date: 02/08/24	Coord Name: L RAMLER	Coord Phone: 8595784212
House Name: the CRESTWOOD		Contract Drawn By: KEB	
		Series: III	
Born on Date: 04/08/2016		CDs Drawn By: BLC	Plan No.: PLAN_NM

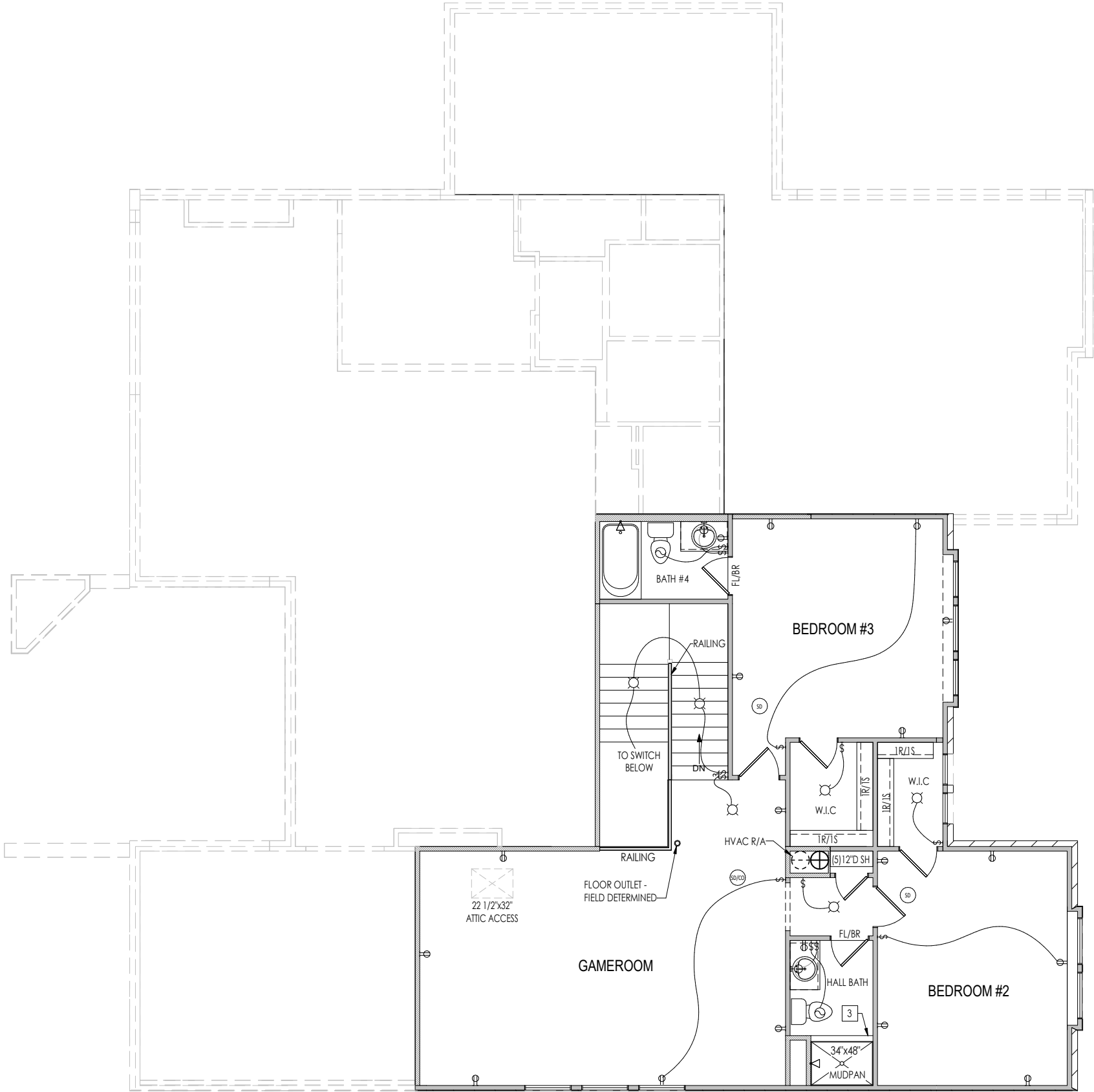
Drees
HOMESSM
Copyright © 2016 (2021) The Drees Company. All Rights Reserved.
211 Grandview Drive, Fort Mitchell, KY 41017
Phone: [859] 578-4200

Sheet Information

4.01
First Floor Mechanical Plan
Elevation "J"

2/7/2024 4:36:03 PM

PROVIDE PASSIVE RADON
SYSTEM AND VENTTHROUGH ROOF.
OUTLET REQUIRED IN ATTIC



General Notes:

1. REFER TO SHEET ON.1 FOR GENERAL NOTES.

Key Notes:

- 1
- 2 HVAC CHASE
- 3 4-1/2" HIGH MUDPAN CURB
- 4 -
- 5 -
- 6 -
- 7 -
- 8 -
- 9 -
- 10 -

MECHANICAL LEGEND

- ◀ DATA JACK

⊖ WALL OUTLET

⊖ WEATHERPROOF GFCI OUTLET

⊖ 220 VOLT OUTLET

⊖ GFCI OUTLET

⊖ FLOOR OUTLET

TV CABLE TELEVISION JACK

↔ SINGLE POLE SWITCH

↔ 3-WAY SWITCH

↔ 4-WAY SWITCH

Ⓜ BLOCK, MOUNT, & SWITCH FOR FUTURE FAN/LIGHT COMBINATION (CENTER, UNLESS OTHERWISE NOTED)
- ⊘ CLG. MOUNTED LIGHT FIXT.

○ SURFACE MOUNT DISC LIGHT OR RECESSED CBLING LIGHT, PER SPECS.

⊘ WALL MOUNTED LIGHT FIXT.

⊘ DOUBLE SPOTLIGHT FIXT.

⊘ DIRECTIONAL CAN LIGHT

⊘ PIN LIGHT

⊘ WALL SCONCE @ 5'-6" A.F.F.

⊘ FLUORESCENT LIGHT

⊘ UNDER CABINET LIGHTING
- ⬮ STAIR LIGHT

⊕ HOSE BIB

⊖ SHOWER HEAD

⊖ GAS GAS HOOK UP

⊖ FLOOR DRAIN

Ⓜ SMOKE DETECTOR

Ⓜ SMOKE DETECTOR/CO DETECTOR COMBINATION

Ⓜ EXHAUST FAN AND LIGHT COMBINATION

⌚ CLG. MTD. EXHAUST FAN

Space for Architect Seal

RESIDENCE FOR:
Model Home
1726 LEDGESTONE WAY
RIVERS POINTE ESTATES 100

Job Number: RPCL-0124-00	Drawing Date: 02/08/24	Coord Name: L RAMLER	Coord Phone: 8595784212
House Name: the CRESTWOOD			Contract Drawn By: KEB
			Series: III
Born on Date: 04/08/2016			CDs Drawn By: BLC
			Plan No.: PLAN_NM

Drees

HOMES

SM

Copyright © 2016 (2021) The Drees Company. All Rights Reserved.
900 East 96th Street, Suite 100, Indianapolis, IN 46240
Phone: [317] 347-7300

Sheet Information

4.02

Second Floor Mechanical Plan
Elevation "J"

2/7/2024 4:36:03 PM

TYPICAL TRIM:

6" FASCIA
(ALL SIDES)8" FRIEZE
(FRONT ONLY, UNLESS OTHERWISE NOTED)

General Notes:

1. REFER TO SHEET ON.1 FOR GENERAL NOTES.
2. ROOFING MATERIAL PER SELECTIONS.

Key Notes:

- 1 -
- 2 -
- 3 -
- 4 -

BRICK and STONE LINTEL SCHEDULE

	SPAN	36" HIGH	48" HIGH	LINTEL SIZE	WINDOW ABOVE
*BRICK	Up to 6'-0"	----	----	L3 1/2 x 3 1/2 x 1/4	----
	Up to 8'-3"	----	----	L5 x 3 1/2 x 5/16	----
	Up to 9'-3"	----	----	L6 x 4 x 5/16	L7 x 4 x 3/8
	Up to 16'-3"	L7 x 4 x 3/8	L8 x 4 x 1/2	L8 x 4 x 1/2	**per Design
*STONE	Up to 6'-0"	----	----	L4 x 3 1/2 x 1/4	----
	Up to 8'-3"	----	----	L5 x 3 1/2 x 5/16	----
	Up to 9'-3"	----	L6 x 4 x 3/8	L7 x 4 x 3/8	**per Design
	Up to 16'-3"	----	L8 x 4 x 1/2	**per Design	**per Design

All Lintels: 4" Minimum bearing required each end
* Brick is based on 40psf and Stone is based on 60psf
** Any lintels not described by the above parameters shall be specifically designed.

Space for Architect Seal

RESIDENCE FOR:

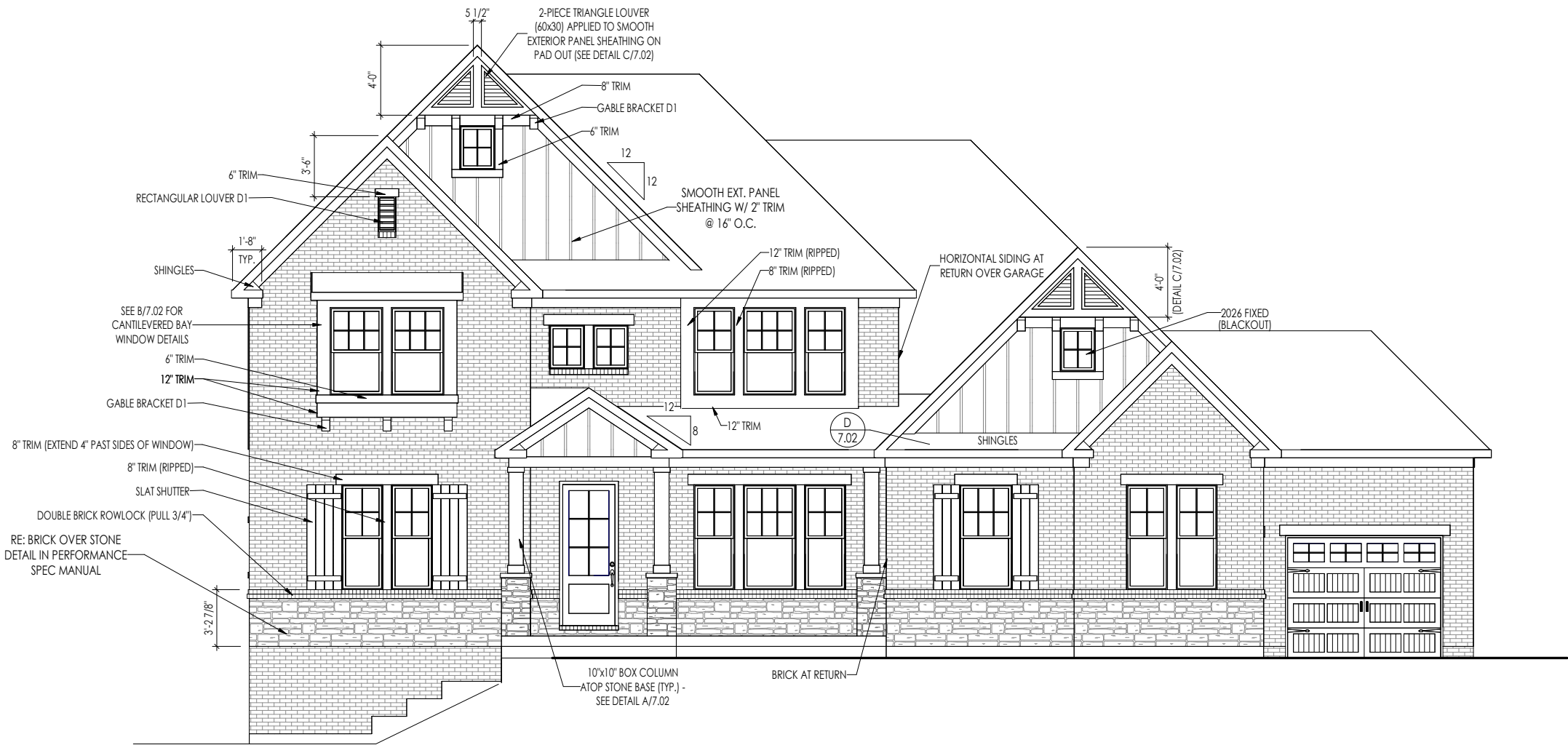
Model Home

1726 LEDGESTONE WAY
RIVERS POINTE ESTATES 100

Job Number: RPEL-0124-00	Drawing Date: 02/08/24	Coord Name: L RAMLER	Coord Phone: 8595784212
House Name: the CRESTWOOD			Contract Drawn By: KEB
Drawing Scale: 1/8" = 1'0"			Series: III
Born on Date: 04/08/2016	CDs Drawn By: BLC	Plan No.: PLAN_NM	



Sheet Information

6.01
Front Elevation
Elevation "J"

ELEVATION 'H'