

General Notes:

1. REFER TO SHEET 0N.1 FOR GENERAL NOTES.

Key Notes:

103A TO LIGHT/SWITCH ABOVE

MECHANICAL LEGEND

- | | | |
|--------------------------|--|--|
| WALL OUTLET | CLG. MOUNTED LIGHT FIXT. | HOSE BIB |
| WEATHERPROOF GFCI OUTLET | SURFACE MOUNT DISC LIGHT OR RECESSED CEILING LIGHT, PER SPECS. | SHOWER HEAD |
| 220 VOLT OUTLET | WALL MOUNTED LIGHT FIXT. | GAS GAS HOOK UP |
| GFCI OUTLET | DOUBLE SPOTLIGHT FIXT. | FLOOR DRAIN |
| FLOOR OUTLET | DIRECTIONAL CAN LIGHT | SMOKE DETECTOR |
| COUNTER POP-UP OUTLET | PIN LIGHT | SMOKE DETECTOR/CO DETECTOR COMBINATION |
| SINGLE POLE SWITCH | WALL SCONCE @ 5'-6" A.F.F. | EXHAUST FAN AND LIGHT COMBINATION |
| 3-WAY SWITCH | FLUORESCENT LIGHT | CLG. MTD. EXHAUST FAN |
| 4-WAY SWITCH | UNDER CABINET LIGHTING | DATA JACK |
| STAIR LIGHT | BLOCK, MOUNT, & SWITCH FOR FUTURE FAN/LIGHT COMBINATION (CENTER, UNLESS OTHERWISE NOTED) | CABLE TELEVISION JACK |

Space for Architect Seal

RESIDENCE FOR:
MARKET
3828 SHERBOURNE DRIVE
SHERBOURNE SUMMITS

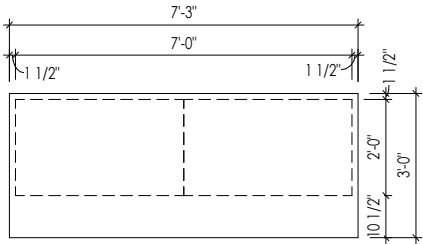
| | | | |
|------------------------------------|----------------------------------|---------------------------------|-------------------------------------|
| Job Number: SBSM-0308-00 | Drawing Date: 12/26/24 | Coord Name: L. RAMLER | Coord Phone: 859.578.4212 |
|------------------------------------|----------------------------------|---------------------------------|-------------------------------------|

| | | |
|-------------|----------------------------|----------------------------------|
| House Name: | Drawing Scale: 1/8" = 1'0" | Contract Drawn By: LJR |
|-------------|----------------------------|----------------------------------|

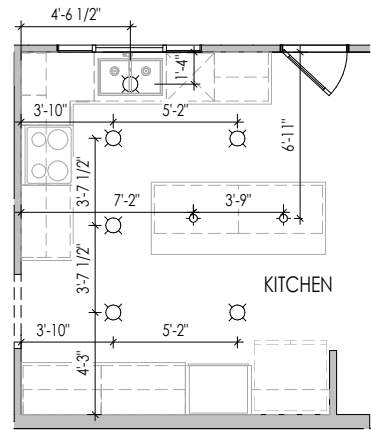
| | |
|--------------------|-----------------------------|
| the QUENTIN | Series: SERIES II |
|--------------------|-----------------------------|

| | | |
|--------------------------|-------------------|-----------------------------|
| Born on Date: 03/10/2010 | CDs Drawn By: SSP | Plan No.: PLAN_NM |
|--------------------------|-------------------|-----------------------------|

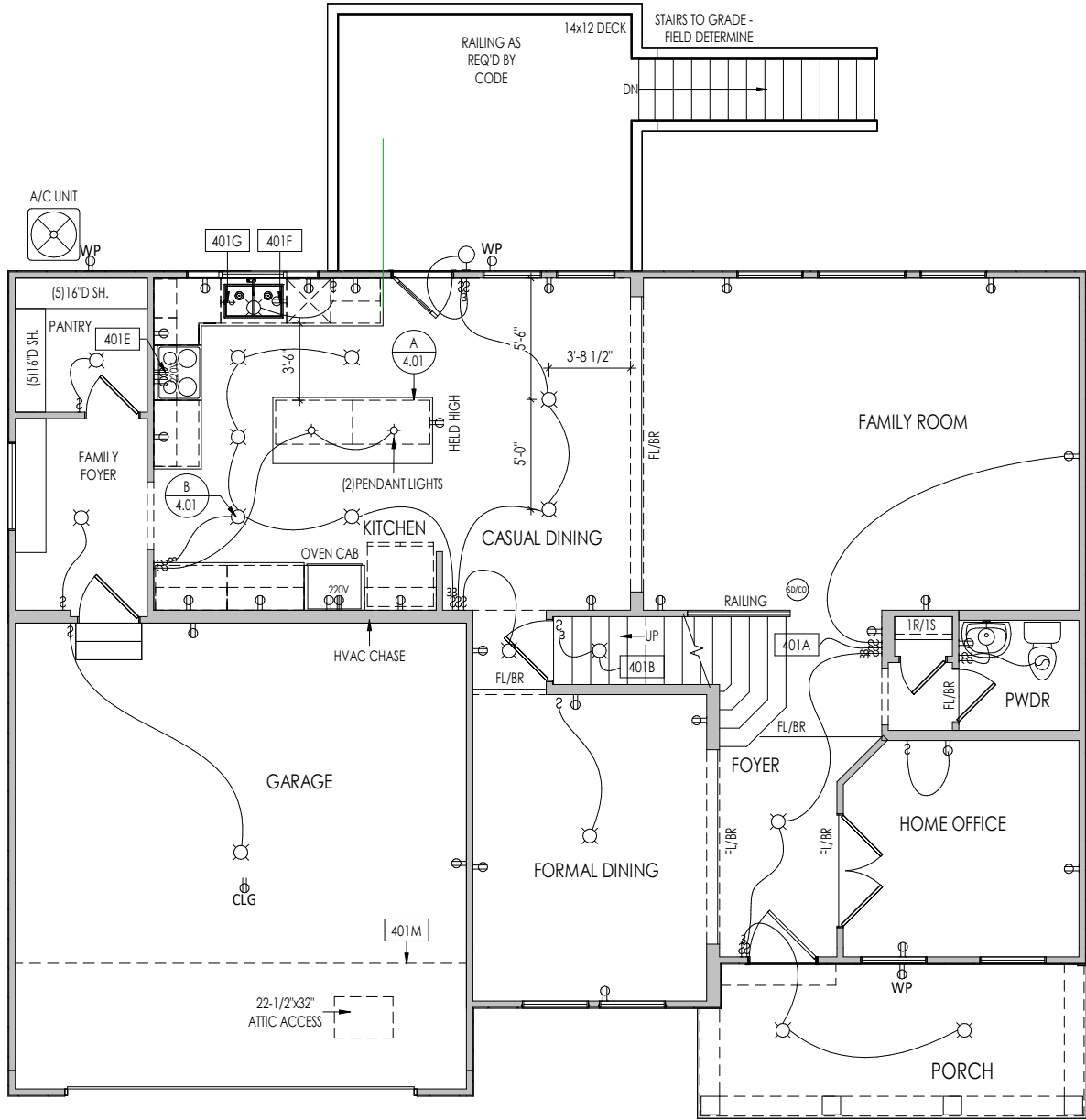
| | | |
|---|-------------------|---|
|  <p>Copyright © 2022 (2021) The Drees Company. All Rights Reserved. 211 Grandview Drive, Fort Mitchell, KY 41017 Phone: [859] 578-4200</p> | Sheet Information | 1.03 Lower Level Mechanical Plan Elevation "F" |
|---|-------------------|---|



A KITCHEN ISLAND DETAIL
4.01 1/4" = 1'-0"



B KITCHEN LIGHTING DETAIL
4.01 1/8" = 1'-0"



PROVIDE PASSIVE RADON
SYSTEM ROUGH-IN

| | |
|---|--|
| General Notes: | |
| 1. REFER TO SHEET 0N.1 FOR GENERAL NOTES. | |
| Key Notes: | |
| 401A | TO SWITCH OR LIGHT ABOVE |
| 401B | TO SWITCH OR LIGHT BELOW |
| 401E | OUTLET FOR RANGE HOOD/MICROWAVE HELD HIGH - VENT TO EXTERIOR |
| 401F | OUTLET FOR DISHWASHER LOCATED IN SINK CABINET |
| 401G | PUSH BUTTON FOR GARBAGE DISPOSAL OR SWITCH LOCATED IN SINK CABINET - REFER TO SELECTIONS |
| 401M | OUTLINE OF SECOND FLOOR ABOVE |

| | | |
|--|--|--|
| MECHANICAL LEGEND | | |
| WALL OUTLET | CLG. MOUNTED LIGHT FIXT. | HOSE BIB |
| WEATHERPROOF GFCI OUTLET | SURFACE MOUNT DISC LIGHT OR RECESSED CEILING LIGHT, PER SPECS. | SHOWER HEAD |
| 220 VOLT OUTLET | WALL MOUNTED LIGHT FIXT. | GAS GAS HOOK UP |
| GFCI OUTLET | DOUBLE SPOTLIGHT FIXT. | FLOOR DRAIN |
| FLOOR OUTLET | COUNTER POP-UP OUTLET | SMOKE DETECTOR |
| COUNTER POP-UP OUTLET | DIRECTIONAL CAN LIGHT | SMOKE DETECTOR/CO DETECTOR COMBINATION |
| SINGLE POLE SWITCH | PIN LIGHT | EXHAUST FAN AND LIGHT COMBINATION |
| 3-WAY SWITCH | WALL SCONCE @ 5'-6" A.F.F. | CLG. MTD. EXHAUST FAN |
| 4-WAY SWITCH | FLUORESCENT LIGHT | DATA JACK |
| STAIR LIGHT | UNDER CABINET LIGHTING | CABLE TELEVISION JACK |
| BLOCK, MOUNT, & SWITCH FOR FUTURE FAN/LIGHT COMBINATION (CENTER, UNLESS OTHERWISE NOTED) | | |

Space for Architect Seal

RESIDENCE FOR:
MARKET
3828 SHERBOURNE DRIVE
SHERBOURNE SUMMITS

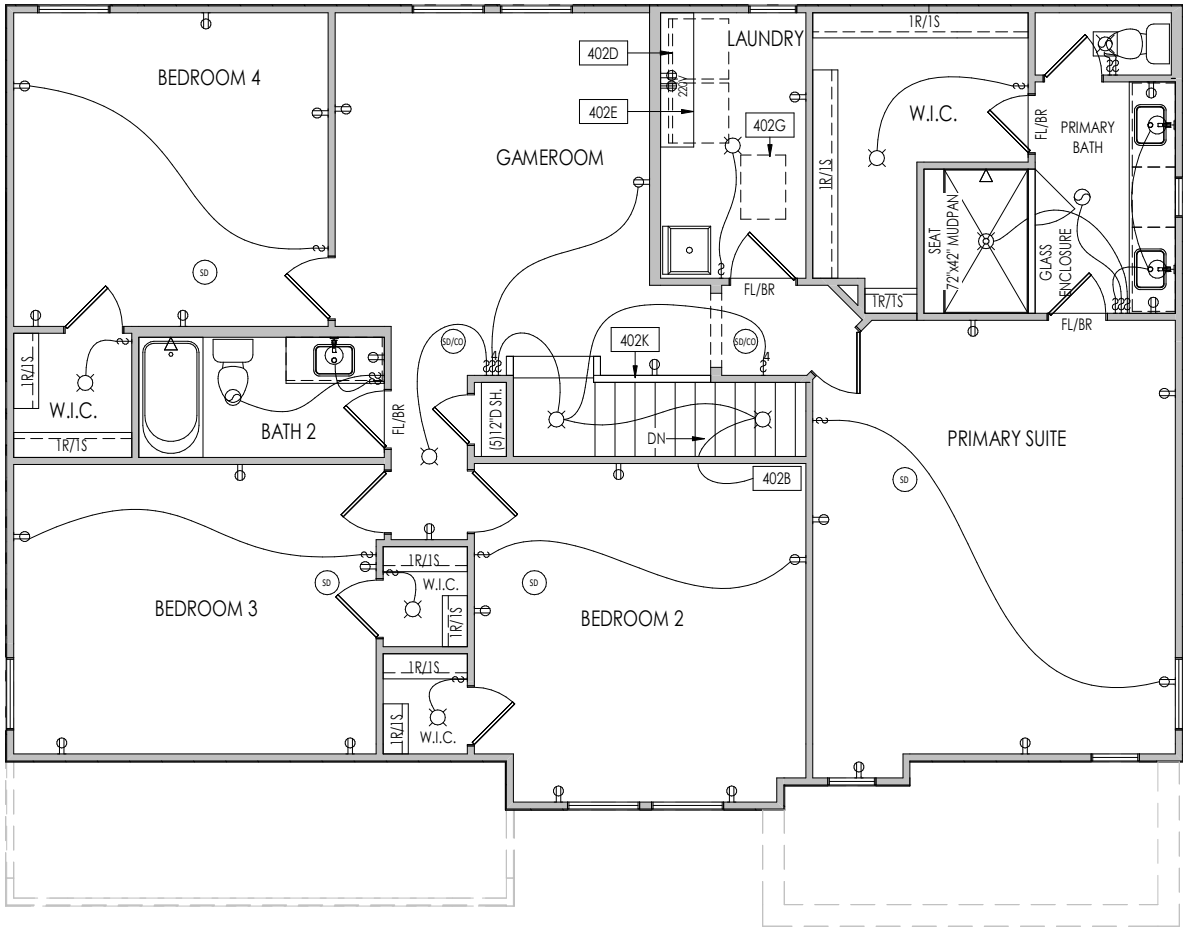
| | | | |
|------------------------------------|----------------------------------|---------------------------------|-------------------------------------|
| Job Number: SBSM-0308-00 | Drawing Date: 12/26/24 | Coord Name: L. RAMLER | Coord Phone: 859.578.4212 |
| House Name: the QUENTIN | | | Contract Drawn By: LJR |
| | | | Series: SERIES II |
| Born on Date: 03/10/2010 | | | CDs Drawn By: SSP |

Copyright © 2022 (2021) The Drees Company. All Rights Reserved.
211 Grandview Drive, Fort Mitchell, KY 41017
Phone: [859] 578-4200

Sheet Information

4.01
First Floor Mechanical Plan
Elevation "F"

PROVIDE PASSIVE RADON
SYSTEM ROUGH-IN



| | |
|---|--|
| General Notes: | |
| 1. REFER TO SHEET 0N.1 FOR GENERAL NOTES. | |
| Key Notes: | |
| 402B | TO SWITCH OR LIGHT BELOW |
| 402D | LOCATE WASHER TO LEFT OF DRYER |
| 402E | 16" DEEP x 5'-6" LONG SHELF HELD AT 5'-7" A.F.F. |
| 402G | 22-1/2" x 32" ATTIC ACCESS PANEL IN CEILING |
| 402K | HALF WALL WITH WOOD CAP |

| MECHANICAL LEGEND | | | | | |
|-------------------|--------------------------|--|--|--|--|
| | WALL OUTLET | | CLG. MOUNTED LIGHT FIXT. | | HOSE BIB |
| | WEATHERPROOF GFCI OUTLET | | SURFACE MOUNT DISC LIGHT OR RECESSED CEILING LIGHT, PER SPECS. | | SHOWER HEAD |
| | 220 VOLT OUTLET | | WALL MOUNTED LIGHT FIXT. | | GAS HOOK UP |
| | GFCI OUTLET | | DOUBLE SPOTLIGHT FIXT. | | FLOOR DRAIN |
| | FLOOR OUTLET | | DIRECTIONAL CAN LIGHT | | SMOKE DETECTOR |
| | COUNTER POP-UP OUTLET | | PIN LIGHT | | SMOKE DETECTOR/CO DETECTOR COMBINATION |
| | SINGLE POLE SWITCH | | WALL SCONCE @ 5'-6\"/> | | EXHAUST FAN AND LIGHT COMBINATION |
| | 3-WAY SWITCH | | FLUORESCENT LIGHT | | CLG. MTD. EXHAUST FAN |
| | 4-WAY SWITCH | | UNDER CABINET LIGHTING | | DATA JACK |
| | STAIR LIGHT | | BLOCK, MOUNT, & SWITCH FOR FUTURE FAN/LIGHT COMBINATION (CENTER, UNLESS OTHERWISE NOTED) | | CABLE TELEVISION JACK |

Space for Architect Seal

RESIDENCE FOR:
MARKET
3828 SHERBOURNE DRIVE
SHERBOURNE SUMMITS

| | | | |
|------------------------------------|----------------------------------|---------------------------------|-------------------------------------|
| Job Number: SBSM-0308-00 | Drawing Date: 12/26/24 | Coord Name: L. RAMLER | Coord Phone: 859.578.4212 |
| House Name: the QUENTIN | | | Contract Drawn By: LJR |
| Born on Date: 03/10/2010 | | | CDs Drawn By: SSP |

Copyright © 2022 (2021) The Drees Company. All Rights Reserved.
211 Grandview Drive, Fort Mitchell, KY 41017
Phone: [859] 578-4200

Sheet Information

4.02
Second Floor Mechanical Plan
Elevation "F"

12/26/2024 1:03:13 PM

| |
|---|
| TYPICAL TRIM: |
| 6" FASCIA (ALL SIDES) |
| 8" FRIEZE (FRONT ONLY, UNLESS OTHERWISE NOTED) |

- General Notes:
1. REFER TO SHEET 0N.1 FOR GENERAL NOTES.

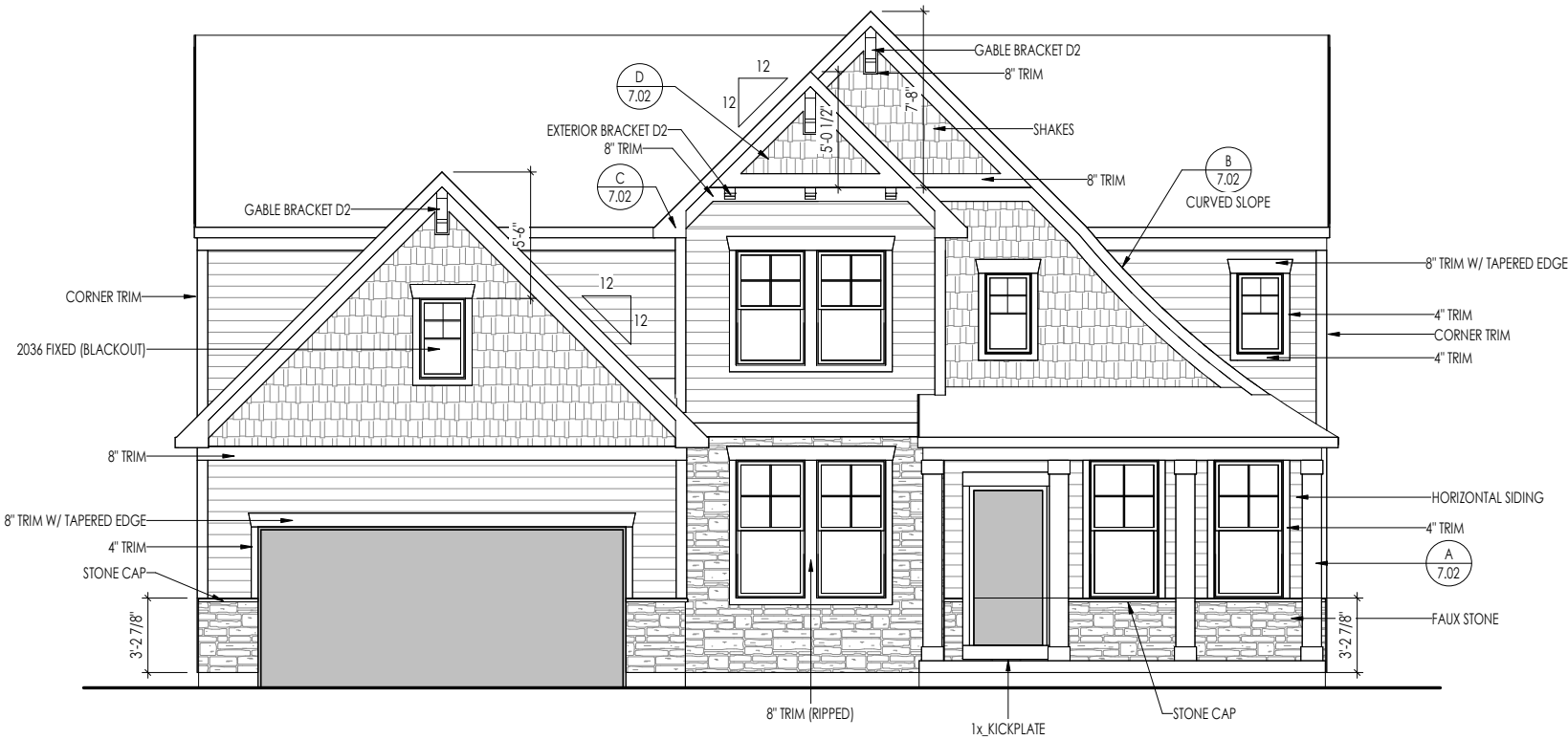
2. ROOFING MATERIAL PER SELECTIONS.

3. CONTACT M&K ENGINEERING FOR HEADER SIZE/BRICK SUPPORT IF GRADE DROPS AND THE AMOUNT OF BRICK OVER GARAGE DOOR SHOWN ON CURRENT ELEVATION IS NO LONGER ACCURATE

4. REFER TO LINTEL SCHEDULE AS NEEDED ON SHEET S-0

Key Notes:

Space for Architect Seal



ELEVATION "F"

RESIDENCE FOR:
MARKET
3828 SHERBOURNE DRIVE
SHERBOURNE SUMMITS

| | | | |
|------------------------------------|----------------------------------|---------------------------------|-------------------------------------|
| Job Number: SBSM-0308-00 | Drawing Date: 12/26/24 | Coord Name: L. RAMLER | Coord Phone: 859.578.4212 |
| House Name: the QUENTIN | | | Contract Drawn By: LJR |
| | | | Series: SERIES II |
| Born on Date: 03/10/2010 | | | CDs Drawn By: SSP PLAN_NM |



Copyright © 2022 (2021) The Drees Company. All Rights Reserved.
211 Grandview Drive, Fort Mitchell, KY 41017
Phone: [859] 578-4200

Sheet Information

6.01

Front Elevation
Elevation "F"