

General Notes

1. REFER TO SHEET ON.1 FOR GENERAL NOTES.

Key Notes

- 1
2 TO SWITCH ABOVE.
3 OUTLET IN JOIST SPACE
4 APPROXIMATE LOCATION OF PLUMBING STACK. LOCATE AS SHOWN TO KEEP OUT OF FINISHED OR FUTURE FINISHED AREA HOLD TIGHT TO FOOTING & FOUNDATION.
5 --
6 --
7 --
8 --
9 --
10 --
11 --
12 --
13 --

Mechanical Legend

◀ PHONE JACK	○ FLUORESCENT LIGHT
⬆ HOME OFFICE OUTLET	⎓ UNDER CABINET LIGHTING
Ⓛ DATA OUTLET	⊗ CLG. MOUNTED LIGHT FIXT.
Ⓟ PROJECTOR ROUGH-IN	○ WALL MOUNTED LIGHT FIXT.
Ⓢ ENTERTAINMENT CENTER OUTLET	○ SURFACE MOUNT DOWN-LIGHT OR RECESSED CEILING LIGHT, PER SPECS.
Ⓢ WALL OUTLET	⊗ DOUBLE SPOTLIGHT FIXT.
Ⓢ WEATHERPROOF OUTLET	⊗ DIRECTIONAL CAN LIGHT
Ⓢ 220 OUTLET	⊗ PIN LIGHT
Ⓢ GROUND FAULT OUTLET	⊗ WALL SCONCE @ 5'-6" A.F.F.
Ⓢ FLOOR OUTLET	⊗ STAIR LIGHT
Ⓢ CABLE TELEVISION JACK	⊗ CLG. MTD. EXHAUST FAN
Ⓢ SINGLE POLE SWITCH	⊗ WALL MTD. EXHAUST FAN
Ⓢ 3-WAY SWITCH	⊗ SMOKE DETECTOR
Ⓢ 4-WAY SWITCH	⊗ HOSE BIB
Ⓢ BLOCK, MOUNT, & SWITCH FOR FUTURE FAN/LIGHT COMBINATION (CENTER, UNLESS OTHERWISE NOTED)	⊗ SHOWER HEAD
⊗ EXHAUST FAN AND LIGHT COMBINATION	⊗ GAS
⊗ FLOOR DRAIN	⊗ GAS HOOK UP
	⊗ CO DETECTOR
	⊗ SMOKE DETECTOR/CO DETECTOR COMBINATION

RESIDENCE FOR:

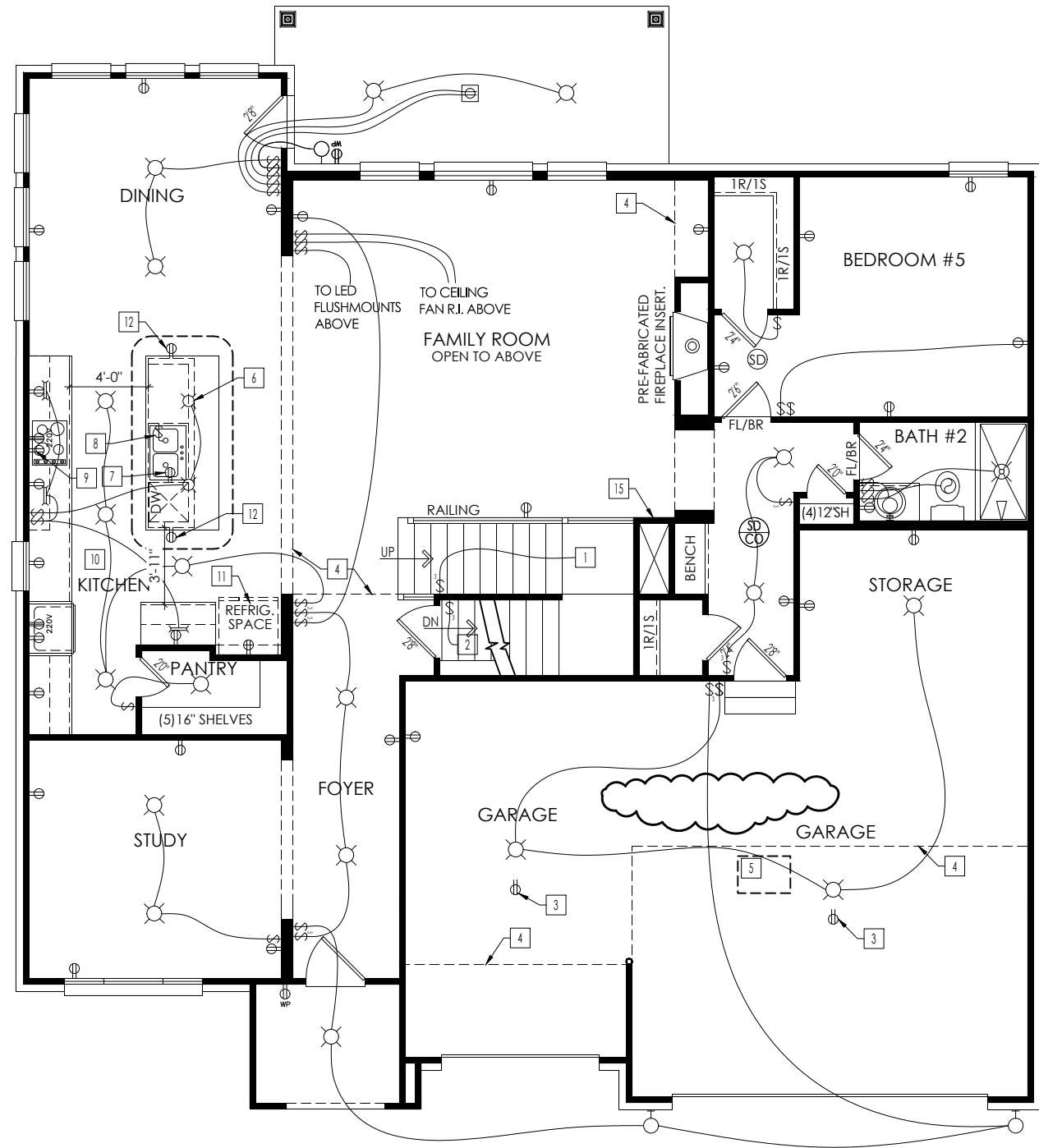
MODEL

TBD_AD
SHANNON RIDGE

Job Number:	Drawing Date:	Coord Name:	Coord Phone:
SHNR-0021-00	06/28/18	MELISSA PINGEL-HYATT	859-578-4290

House Name:	Drawing Scale: 1/8" = 1'-0"	Series:
the BENNETT		STERLING
		Plan No.:

 Copyright © 2017, (2017) The Drees Company, All Rights Reserved. 211 GRANDVIEW DRIVE, FORT MITCHELL, KY 41017 PHONE: (859) 578-4200	Sheet Information	1.03 LOWER LEVEL MECHANICAL PLAN ELEVATION "B"
--	-------------------	--



Mechanical Legend	
PHONE JACK	FLUORESCENT LIGHT
HOME OFFICE OUTLET	UNDER CABINET LIGHTING
DATA OUTLET	CLG. MOUNTED LIGHT FIXT.
PROJECTOR ROUGH-IN	WALL MOUNTED LIGHT FIXT.
ENTERTAINMENT CENTER OUTLET	SURFACE MOUNT DISC LIGHT OR RECESSED CEILING LIGHT, PER SPECS.
WALL OUTLET	DOUBLE SPOTLIGHT FIXT.
WEATHERPROOF OUTLET	DIRECTIONAL CAN LIGHT
220 OUTLET	PIN LIGHT
GROUND FAULT OUTLET	WALL SCONCE @ 5'-6" A.F.F.
FLOOR OUTLET	STAIR LIGHT
CABLE TELEVISION JACK	CLG. MTD. EXHAUST FAN
SINGLE POLE SWITCH	WALL MTD. EXHAUST FAN
3-WAY SWITCH	SMOKE DETECTOR
4-WAY SWITCH	HOSE BIB
BLOCK, MOUNT, & SWITCH FOR FUTURE FAN/LIGHT COMBINATION (CENTER, UNLESS OTHERWISE NOTED)	SHOWER HEAD
EXHAUST FAN AND LIGHT COMBINATION	GAS HOOK UP
FLOOR DRAIN	CO DETECTOR
	SMOKE DETECTOR/CO DETECTOR COMBINATION

General Notes

1. REFER TO SHEET ON.1 FOR GENERAL NOTES.

Key Notes

- 1 TO SWITCH OR LIGHT ABOVE.
- 2 TO SWITCH OR LIGHT BELOW.
- 3 OUTLET IN CEILING.
- 4 OUTLINE OF SECOND FLOOR ABOVE.
- 5 22-1/2"x 32" ATTIC ACCESS PANEL, HOLD MINIMUM 9'-6" BACK FROM GARAGE DOOR.
- 6 (2) PENDANT LIGHTS OVER KITCHEN ISLAND WITH SWITCH
- 7 OUTLET IN SINK CABINET FOR DISHWASHER DISCONNECT
- 8 GARBAGE DISPOSAL SWITCH INSIDE KITCHEN ISLAND BASE CABINET
- 9 OUTLET FOR VENTHOOD/MICROWAVE HELD HIGH - VENT TO EXTERIOR
- 10 REFER TO JOBDQC ON DREESBUILD FOR FINAL KITCHEN CABINET LAYOUT
- 11 PROVIDE 3'-3" MIN. FOR CABINET ABOVE REFRIGERATOR SPACE.
- 12 HOLD OUTLET HIGH
- 13
- 14
- 15 HVAC CHASE
- 16 --
- 17 --
- 18 --
- 19 --
- 20 --

RESIDENCE FOR:

MODEL

TBD_AD
SHANNON RIDGE

Job Number:	Drawing Date:	Coord Name:	Coord Phone:
SHNR-0021-00	06/28/18	MELISSA PINGEL-HYATT	859-578-4290

House Name:	Drawing Scale: 1/8" = 1'-0"	Series:
the BENNETT		STERLING
		Plan No.:

 Copyright © 2017, (2017) The Drees Company, All Rights Reserved. 211 GRANDVIEW DRIVE, FORT MITCHELL, KY 41017 PHONE: (859) 578-4200	Sheet Information	4.01 1ST FLOOR MECHANICAL PLAN ELEVATION "B"
--	-------------------	--



General Notes

1. REFER TO SHEET ON.1 FOR GENERAL NOTES.

Key Notes

- 1 TO LIGHT OR SWITCH BELOW
- 2 --
- 3 36" HALF WALL WITH WOOD CAP PER SPECIFICATION MANUAL. OPTIONAL RAIL.
- 4 42" HALF WALL WITH WOOD CAP PER SPECIFICATION MANUAL. OPTIONAL RAIL.
- 5 22-1/2" x 32" ATTIC ACCESS.
- 6 16" DEEP SHELF AT 5'-7" A.F.F.
- 7 LOCATE WASHER TO THE LEFT OF THE DRYER.
- 8 HVAC CHASE
- 9 TILED SEAT SLOPED 3/4" FOR WATER RUN-OFF OVER FLEXIBLE CHLORINATED POLYETHYLENE WATERPROOF MEMBRANE (CONTINUE OVER FRONT AND BACK OF SEAT)."
- 10 GLASS SHOWER DOOR AND ENCLOSURE
- 11 SHOWER CONTROL VALVE UNDER SHOWER HEAD
- 12 --
- 13 --

Mechanical Legend

◀ PHONE JACK	○ FLUORESCENT LIGHT
▲ HOME OFFICE OUTLET	— UNDER CABINET LIGHTING
□ DATA OUTLET	⊗ CLG. MOUNTED LIGHT FIXT.
▢ PROJECTOR ROUGH-IN	○ WALL MOUNTED LIGHT FIXT.
⬢ ENTERTAINMENT CENTER OUTLET	○ SURFACE MOUNT DOWN-LIGHT OR RECESSED CEILING LIGHT, PER SPECS.
⊖ WALL OUTLET	⊗ DOUBLE SPOTLIGHT FIXT.
⊖ WEATHERPROOF OUTLET	⊗ DIRECTIONAL CAN LIGHT
⊖ 220 OUTLET	⊗ PIN LIGHT
⊖ GROUND FAULT OUTLET	⊗ WALL SCONCE @ 5'-6" A.F.F.
⊖ FLOOR OUTLET	⊗ STAIR LIGHT
⊗ CABLE TELEVISION JACK	⊗ CLG. MTD. EXHAUST FAN
⚡ SINGLE POLE SWITCH	⊗ WALL MTD. EXHAUST FAN
⚡ 3-WAY SWITCH	⊗ SMOKE DETECTOR
⚡ 4-WAY SWITCH	⊗ HOSE BIB
⊗ BLOCK, MOUNT, & SWITCH FOR FUTURE FAN/LIGHT COMBINATION (CENTER, UNLESS OTHERWISE NOTED)	⊗ SHOWER HEAD
⊗ EXHAUST FAN AND LIGHT COMBINATION	⊗ GAS
⊗ FLOOR DRAIN	⊗ GAS HOOK UP
	⊗ CO DETECTOR
	⊗ SMOKE DETECTOR/CO DETECTOR COMBINATION

RESIDENCE FOR:

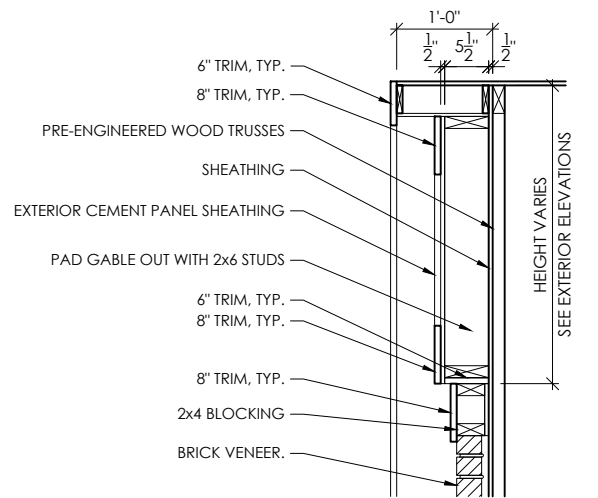
MODEL

TBD_AD
SHANNON RIDGE

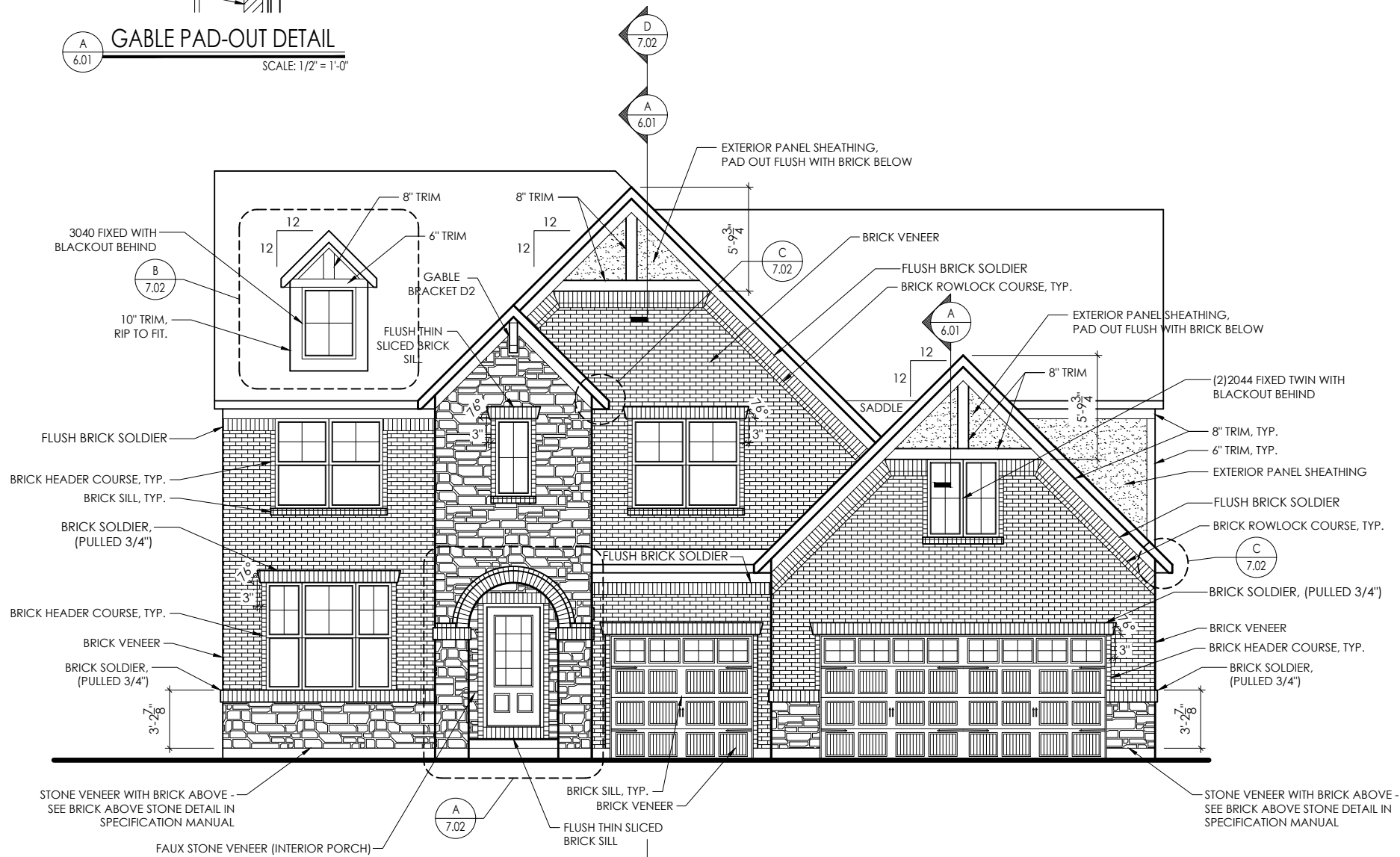
Job Number:	Drawing Date:	Coord Name:	Coord Phone:
SHNR-0021-00	06/28/18	MELISSA PINGEL-HYATT	859-578-4290

House Name:	Drawing Scale: 1/8" = 1'-0"	Series:
the BENNETT		STERLING
		Plan No.:

 Copyright © 2017, (2017) The Drees Company, All Rights Reserved. 211 GRANDVIEW DRIVE, FORT MITCHELL, KY 41017 PHONE: (859) 578-4200	Sheet Information	4.02 2ND FLOOR MECHANICAL PLAN ELEVATION "B"
--	-------------------	--



A 6.01 GABLE PAD-OUT DETAIL
SCALE: 1/2" = 1'-0"



FRONT ELEVATION
SCALE: 1/8" = 1'-0"

TYPICAL TRIM:

6" FASCIA
(ALL SIDES)

8" FRIEZE
(FRONT ONLY, UNLESS OTHERWISE NOTED)

General Notes

- REFER TO SHEET 0N.1 FOR GENERAL NOTES.
- REFER TO SELECTIONS/SPECIFICATIONS FOR ROOFING MATERIAL.

Key Notes

-
-
-
-
-
-
-
-
-
-
-
-
-
-
-
-
-
-
-

BRICK VENEER LINTEL SCHEDULE

SPAN	STEEL ANGLE SIZE	HEIGHT OF VENEER ABOVE LINTEL
Up to 3'-6"	L3-1/2 x3-1/2 x1/4	20 FT. MAX
Up to 6'-0"	L5x 3-1/2x 5/16 (LLV)	20 FT. MAX
Up to 8'-0"	L6x 3-1/2x 3/8 (LLV)	20 FT. MAX
9'-0"	L7x 4x 3/8 (LLV)	12 FT. MAX
*16'-0"	L7x 4x 3/8 (LLV)	3 FT. MAX
*16'-0"	L8x 4x 1/2 (LLV)	4-1/2 FT. MAX

ALL LINTELS <=6' SHALL HAVE 4" MINIMUM BEARING AT EACH END.
ALL LINTELS >=6' SHALL HAVE 8" MINIMUM BEARING AT EACH END.
* FASTENED TO HDR @ 1/3 SPAN POINTS THRU 1-1/2" LONG VERTICALLY SLOTTED HOLES IN LINTEL W/ 1/2" DIA. x 3-1/2" LONG LAG SCREWS. LOCATE LAG SCREWS @ MIDDLE OF SLOTTED HOLE & TIGHTEN SCREWS ENOUGH TO ALLOW MOVEMENT OF LINTEL.
***ANY LINTEL CONDITION NOT SPECIFIED ABOVE SHALL BE DESIGNED

RESIDENCE FOR:

MODEL

TBD_AD
SHANNON RIDGE

Job Number:	Drawing Date:	Coord Name:	Coord Phone:
SHNR-0021-00	06/28/18	MELISSA PINGEL-HYATT	859-578-4290

House Name:	Drawing Scale: 1/8" = 1'-0"	Series:
the BENNETT		STERLING
		Plan No.:

Copyright © 2017, (2017) The Drees Company. All Rights Reserved.
211 GRANDVIEW DRIVE, FORT MITCHELL, KY 41017
PHONE: (859) 578-4200

Sheet Information

6.01
FRONT & REAR ELEVATIONS
ELEVATION "B"