

General Notes:

- REFER TO SHEET ON.1 FOR GENERAL NOTES.

Key Notes:

401A	TO SWITCH OR LIGHT ABOVE
401D	HOLD OUTLET HIGH ON ISLAND
401F	OUTLET FOR DISHWASHER LOCATED IN SINK CABINET
401G	PUSH BUTTON FOR GARBAGE DISPOSAL OR SWITCH LOCATED IN SINK CABINET - REFER TO SELECTIONS
401H	LOCATE WASHER TO LEFT OF DRYER
401J	UPPER WALL CABINETS OR 16" DEEP x 5'-6" LONG SHELF HELD AT 5'-7" A.F.F. - REFER TO SELECTIONS
401L	*choose city* (RAL) PRE-FABRICATED FIREPLACE INSERT -OR- (NSH) PRE-FABRICATED FIREPLACE INSERT SEE DETAIL F-XXX-X FOR SURROUND
401M	22-1/2" x 32" ATTIC ACCESS PANEL IN CEILING
401U	GLASS SHOWER PANEL/ENCLOSURE

MECHANICAL LEGEND

⊖	WALL OUTLET	⊙	CLG. MOUNTED LIGHT FIXT.	+	HOSE BIB
⊖	WEATHERPROOF GFCI OUTLET	⊙	SURFACE MOUNT DISC LIGHT OR RECESSED CEILING LIGHT, PER SPECS.	⊖	SHOWER HEAD
⊖	220 VOLT OUTLET	⊙	WALL MOUNTED LIGHT FIXT.	⊖	GAS HOOK UP
⊖	GFCI OUTLET	⊙	DOUBLE SPOTLIGHT FIXT.	⊖	FLOOR DRAIN
⊖	FLOOR OUTLET	⊙	DIRECTIONAL CAN LIGHT	⊖	SMOKE DETECTOR
⊖	COUNTER POP-UP OUTLET	⊙	PIN LIGHT	⊖	SMOKE DETECTOR/CO DETECTOR COMBINATION
⊖	SINGLE POLE SWITCH	⊙	WALL SCONCE @ 5'-6" A.F.F.	⊖	EXHAUST FAN AND LIGHT COMBINATION
⊖	3-WAY SWITCH	⊙	FLUORESCENT LIGHT	⊖	CLG. MTD. EXHAUST FAN
⊖	4-WAY SWITCH	⊙	UNDER CABINET LIGHTING	⊖	DATA JACK
⊖	STAIR LIGHT	⊙	BLOCK, MOUNT, & SWITCH FOR FUTURE FAN/LIGHT COMBINATION (CENTER, UNLESS OTHERWISE NOTED)	⊖	CABLE TELEVISION JACK

Space for Architect Seal

**RESIDENCE FOR:
MARKET
TBD
TUPELO JUNCTION**

Job Number: TUPJ-0168-00	Drawing Date: 10/2/2025	Coord Name: GREG PIEPER	Coord Phone: 859.578.4355
House Name: the ALTON			Contract Drawn By: EWT
Born on Date: 10/24/24			CDs Drawn By: CM
Series: PREMIER			Plan No.: PLAN_NM

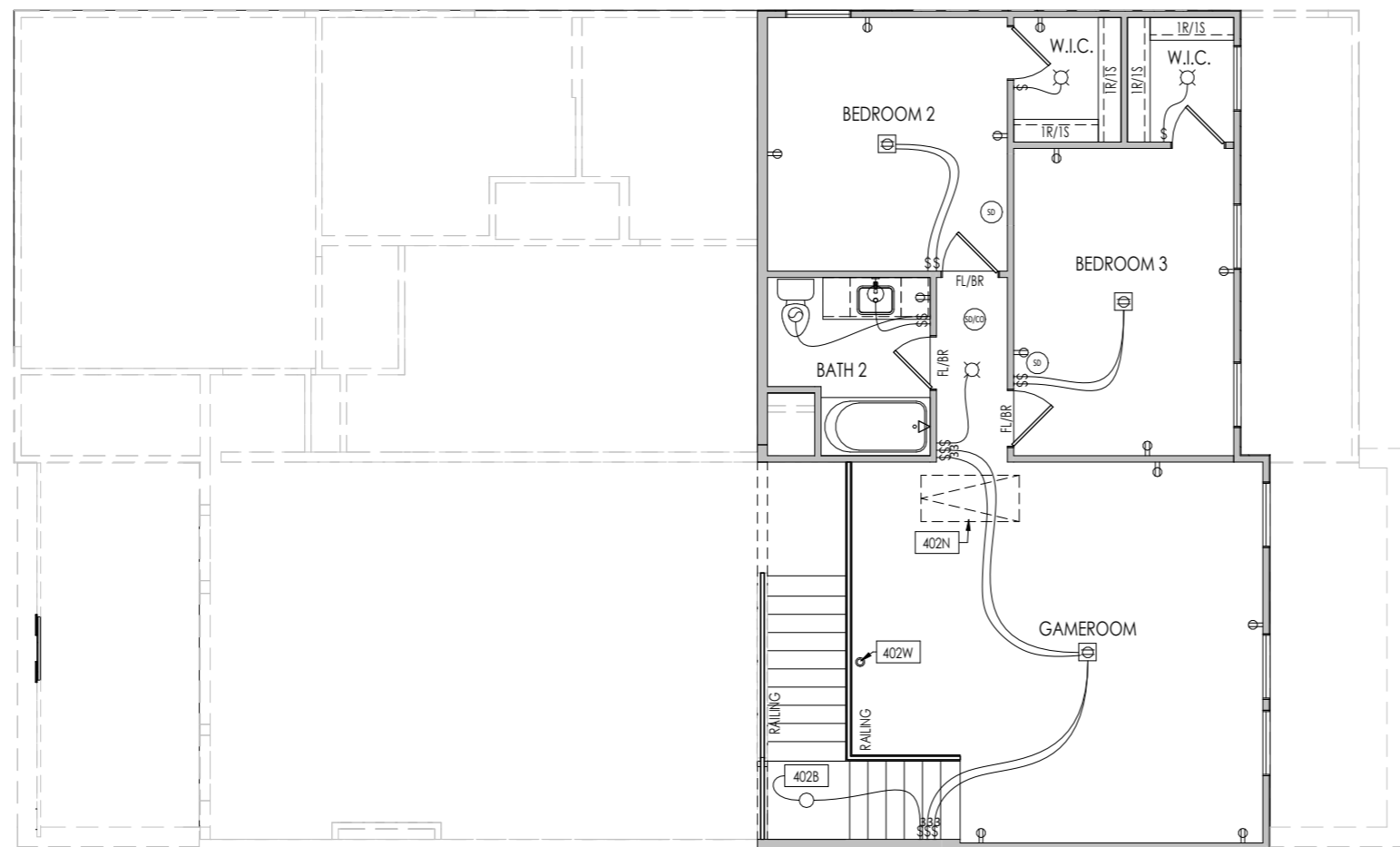
4.01

**First Floor Mechanical Plan
Elevation "A"**

Copyright © 2023 (2024) The Drees Company. All Rights Reserved.
8521 Six Forks Road, Suite 500, Raleigh, NC 27615
Phone: [919] 844-9288

I:\Contrasts\SouthEast\TRAIL\EGH\TUPJ\TUPJ-0168-00\TUPJ-0168-00.rvt

1/7/2025 1:12:10 PM



General Notes:

1. REFER TO SHEET ON.1 FOR GENERAL NOTES.

Key Notes:

402B	TO SWITCH OR LIGHT BELOW
402N	PULL DOWN ATTIC ACCESS STAIRS (25-1/2" x 54") WITH LIGHT AND OUTLET
402W	FLOOR OUTLET - EXACT LOCATION TO BE FIELD DETERMINED

MECHANICAL LEGEND

⊖ WALL OUTLET	⊙ CLG. MOUNTED LIGHT FIXT.	+ HOSE BIB
⊖ WEATHERPROOF GFCI OUTLET	⊙ SURFACE MOUNT DISC LIGHT OR RECESSED CEILING LIGHT, PER SPECS.	⊖ SHOWER HEAD
⊖ 220 VOLT OUTLET	⊙ WALL MOUNTED LIGHT FIXT.	⊖ GAS HOOK UP
⊖ GFCI OUTLET	⊙ DOUBLE SPOTLIGHT FIXT.	⊖ FLOOR DRAIN
⊖ FLOOR OUTLET	⊙ DIRECTIONAL CAN LIGHT	⊖ SMOKE DETECTOR
⊖ COUNTER POP-UP OUTLET	⊙ PIN LIGHT	⊖ SMOKE DETECTOR/CO DETECTOR COMBINATION
⊖ SINGLE POLE SWITCH	⊖ WALL SCONCE @ 5'-6" A.F.F.	⊖ EXHAUST FAN AND LIGHT COMBINATION
⊖ 3-WAY SWITCH	⊖ FLUORESCENT LIGHT	⊖ CLG. MTD. EXHAUST FAN
⊖ 4-WAY SWITCH	⊖ UNDER CABINET LIGHTING	⊖ DATA JACK
⊖ STAIR LIGHT	⊖ BLOCK, MOUNT, & SWITCH FOR FUTURE FAN/LIGHT COMBINATION (CENTER, UNLESS OTHERWISE NOTED)	⊖ CABLE TELEVISION JACK

Space for Architect Seal

RESIDENCE FOR:
MARKET
TBD
TUPELO JUNCTION

Job Number: TUPJ-0168-00	Drawing Date: 10/2/2025	Coord Name: GREG PIEPER	Coord Phone: 859.578.4355
------------------------------------	-----------------------------------	-----------------------------------	-------------------------------------

House Name: the ALTON	Drawing Scale: 1/8" = 1'0"	Contract Drawn By: EWT
---------------------------------	----------------------------	----------------------------------

Series: PREMIER

Plan No.: PLAN_NM

Born on Date: 10/24/24	CDs Drawn By: CM
------------------------	------------------

Sheet Information

4.02
Second Floor Mechanical Plan
Elevation "A"

1/7/2025 1:12:10 PM

C:\Contrats\SOUTHEAST\RALEIGH\TUPJ\TUPJ-0168-00\TUPJ-0168-00.rvt

TYPICAL TRIM:
6" FASCIA (ALL SIDES)
8" FRIEZE (FRONT ONLY, UNLESS OTHERWISE NOTED)

- General Notes:**
- REFER TO SHEET ON.1 FOR GENERAL NOTES.
 - ROOFING MATERIAL PER SELECTIONS.
 - REFER TO SHEET S-0 FOR LINTEL SCHEDULE.
 - CONTACT M&K ENGINEERING FOR HEADER SIZE/BRICK SUPPORT IF GRADE DROPS AND THE AMOUNT OF BRICK OVER GARAGE DOOR SHOWN ON CURRENT ELEVATION IS NO LONGER ACCURATE (IF APPLICABLE).
 - FRONT AND GARAGE DOORS PER SELECTIONS.

Key Notes:



Space for Architect Seal

RESIDENCE FOR:
MARKET
TBD
TUPELO JUNCTION

Job Number: TUPJ-0168-00	Drawing Date: 10/2/2025	Coord Name: GREG PIEPER	Coord Phone: 859.578.4355
House Name: the ALTON			Contract Drawn By: EWT
Born on Date: 10/24/24			Series: PREMIER
CDs Drawn By: CM			Plan No.: PLAN_NM

<p>Drees HOMES SM</p> <p><small>Copyright © 2023 (2024) The Drees Company. All Rights Reserved. 8521 Six Forks Road, Suite 500, Raleigh, NC 27615 Phone: [919] 844-9288</small></p>	<p>Sheet Information</p>	<p>6.01</p> <p>Front Elevation Elevation "A"</p>