

General Notes:

1. REFER TO SHEET ON.1 FOR GENERAL NOTES.

Key Notes:

103A TO LIGHT/SWITCH ABOVE

MECHANICAL LEGEND

WALL OUTLET	CLG. MOUNTED LIGHT FIXT.	HOSE BIB
WEATHERPROOF GFCI OUTLET	SURFACE MOUNT DISC LIGHT OR RECESSED CEILING LIGHT, PER SPECS.	SHOWER HEAD
220 VOLT OUTLET	WALL MOUNTED LIGHT FIXT.	GAS GAS HOOK UP
GFCI OUTLET	DOUBLE SPOTLIGHT FIXT.	FLOOR DRAIN
FLOOR OUTLET	DIRECTIONAL CAN LIGHT	SMOKE DETECTOR
COUNTER POP-UP OUTLET	PIN LIGHT	SMOKE DETECTOR/CO DETECTOR COMBINATION
SINGLE POLE SWITCH	WALL SCONCE @ 5'-6" A.F.F.	EXHAUST FAN AND LIGHT COMBINATION
3-WAY SWITCH	FLUORESCENT LIGHT	CLG. MTD. EXHAUST FAN
4-WAY SWITCH	UNDER CABINET LIGHTING	DATA JACK
STAIR LIGHT	BLOCK, MOUNT, & SWITCH FOR FUTURE FAN/LIGHT COMBINATION (CENTER, UNLESS OTHERWISE NOTED)	CABLE TELEVISION JACK

Space for Architect Seal

RESIDENCE FOR:
MARKET
10468 FAIRBOURNE DRIVE
VILLAGES OF DECOURSEY

Job Number: VDY-0050-00	Drawing Date: 02.19.2025	Coord Name: L.RAMLER	Coord Phone: 859.578.4212
-----------------------------------	------------------------------------	--------------------------------	-------------------------------------

House Name:	Drawing Scale: 1/8" = 1'0"	Contract Drawn By: IES
-------------	----------------------------	----------------------------------

the GARRETT

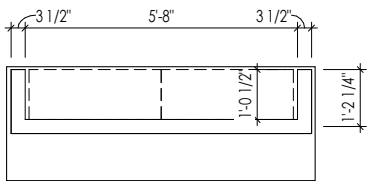
Born on Date:	02/01/2022	CDs Drawn By:	WAB	Plan No.:
---------------	------------	---------------	-----	-----------



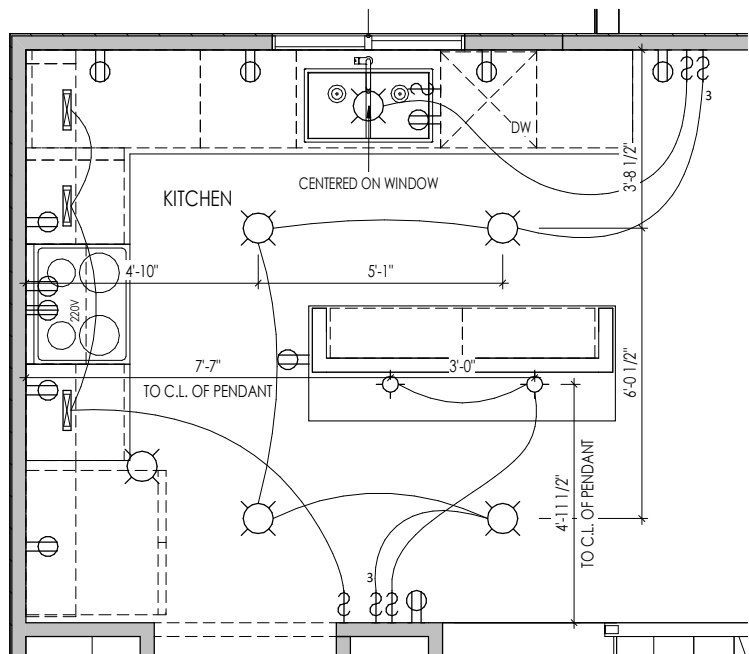
Copyright © 2021 (2022) The Drees Company. All Rights Reserved.
211 Grandview Drive, Fort Mitchell, KY 41017
Phone: [859] 578-4200

Sheet Information

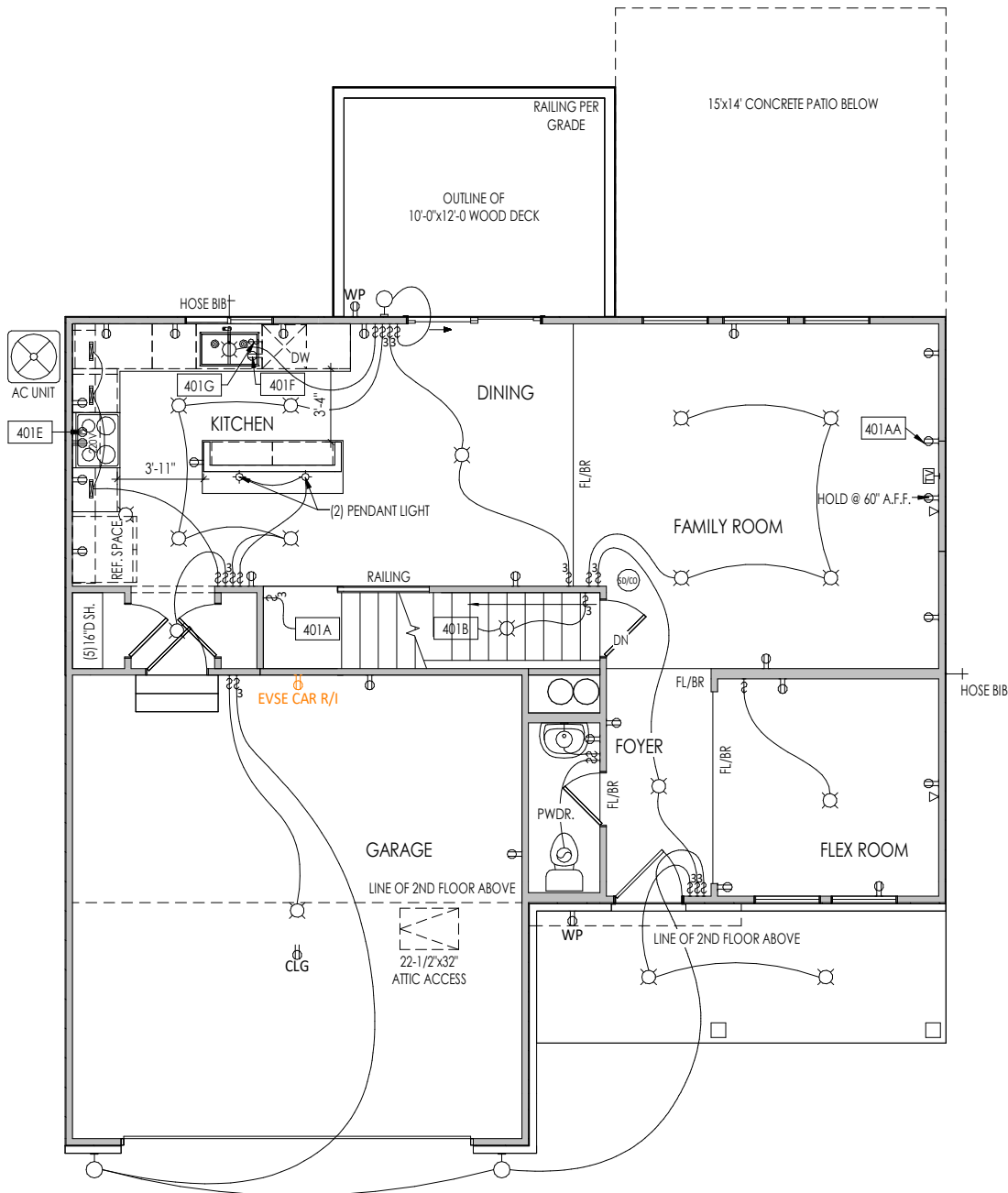
1.03
Lower Level Mechanical Plan
Elevation "B"



A
4.01 Kitchen Island Detail
1/4" = 1'-0"



(S) 1/6" D SH.
B
4.01 Kitchen Lighting Plan
1/4" = 1'-0"



General Notes:

1. REFER TO SHEET ON.1 FOR GENERAL NOTES.

Key Notes:

401A	TO SWITCH OR LIGHT ABOVE
401AA	STANDARD HEIGHT OUTLET HELD OFF CENTER TO THE RIGHT 30"-36" FOR OPTIONAL FIREPLACE
401B	TO SWITCH OR LIGHT BELOW
401E	OUTLET FOR RANGE HOOD/MICROWAVE HELD HIGH, VENT TO EXTERIOR
401F	OUTLET FOR DISHWASHER LOCATED IN SINK CABINET
401G	PUSH BUTTON OR SWITCH LOCATED FOR GARBAGE DISPOSAL IN SINK CABINET - REFER TO SELECTIONS

MECHANICAL LEGEND

⊖ WALL OUTLET	⊖ CLG. MOUNTED LIGHT FIXT.	⊖ HOSE BIB
⊖ WEATHERPROOF GFCI OUTLET	⊖ SURFACE MOUNT DISC LIGHT OR RECESSED CEILING LIGHT, PER SPECS.	⊖ SHOWER HEAD
⊖ 220 VOLT OUTLET	⊖ WALL MOUNTED LIGHT FIXT.	⊖ GAS HOOK UP
⊖ GFCI OUTLET	⊖ DOUBLE SPOTLIGHT FIXT.	⊖ FLOOR DRAIN
⊖ FLOOR OUTLET	⊖ DIRECTIONAL CAN LIGHT	⊖ SMOKE DETECTOR
⊖ COUNTER POP-UP OUTLET	⊖ PIN LIGHT	⊖ SMOKE DETECTOR/CO DETECTOR COMBINATION
⊖ SINGLE POLE SWITCH	⊖ WALL SCONCE @ 5'-6" A.F.F.	⊖ EXHAUST FAN AND LIGHT COMBINATION
⊖ 3-WAY SWITCH	⊖ FLUORESCENT LIGHT	⊖ CLG. MTD. EXHAUST FAN
⊖ 4-WAY SWITCH	⊖ UNDER CABINET LIGHTING	⊖ DATA JACK
⊖ STAIR LIGHT	⊖ BLOCK, MOUNT, & SWITCH FOR FUTURE FAN/LIGHT COMBINATION (CENTER, UNLESS OTHERWISE NOTED)	⊖ CABLE TELEVISION JACK

Space for Architect Seal

RESIDENCE FOR:
MARKET
10468 FAIRBOURNE DRIVE
VILLAGES OF DECOURSEY

Job Number: VDY-0050-00	Drawing Date: 02.19.2025	Coord Name: L.RAMLER	Coord Phone: 859.578.4212
-----------------------------------	------------------------------------	--------------------------------	-------------------------------------

House Name:	Drawing Scale: 1/8" = 1'-0"	Contract Drawn By: IES
-------------	-----------------------------	----------------------------------

the GARRETT	Series: CLASSIC
--------------------	---------------------------

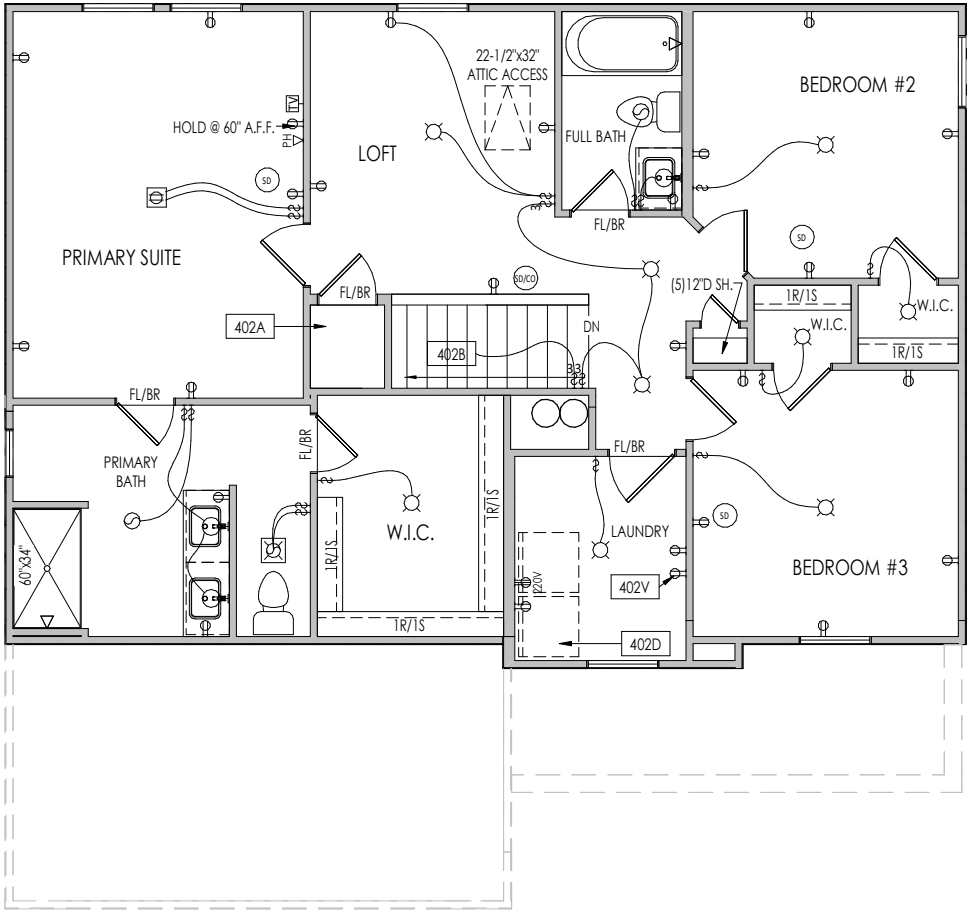
Born on Date: 02/01/2022	CDs Drawn By: WAB	Plan No.:
--------------------------	-------------------	-----------

Drees HOMES
SM
Copyright © 2021 (2022) The Drees Company. All Rights Reserved.
211 Grandview Drive, Fort Mitchell, KY 41017
Phone: [859] 578-4200

Sheet Information

4.01
First Floor Mechanical Plan
Elevation "B"

2/19/2025 4:20:57 PM



General Notes:	
1. REFER TO SHEET ON.1 FOR GENERAL NOTES.	
Key Notes:	
402A	2'-6" RAISED PLATFORM - FINISH w/ PLATFORM w/ DRYWALL, TOP AND FRONT SIDE
402B	TO SWITCH OR LIGHT BELOW
402D	LOCATE WASHER TO LEFT OF DRYER
402V	STRUCTURED WIRE ENCLOSURE LOCATED PER PLAN W/ BASE @ 40" A.F.F., ELECTRICIAN TO RUN WHIP AT ROUGH TO 36", LEAVE 24" OF WIRE AND ADD OUTLET INSIDE BOX AT FINAL

MECHANICAL LEGEND					
	WALL OUTLET		CLG. MOUNTED LIGHT FIXT.		HOSE BIB
	WEATHERPROOF GFCI OUTLET		SURFACE MOUNT DISC LIGHT OR RECESSED CEILING LIGHT, PER SPECS.		SHOWER HEAD
	220 VOLT OUTLET		WALL MOUNTED LIGHT FIXT.		GAS HOOK UP
	GFCI OUTLET		DOUBLE SPOTLIGHT FIXT.		FLOOR DRAIN
	FLOOR OUTLET		DIRECTIONAL CAN LIGHT		SMOKE DETECTOR
	COUNTER POP-UP OUTLET		PIN LIGHT		SMOKE DETECTOR/ CO DETECTOR COMBINATION
	SINGLE POLE SWITCH		WALL SCONCE @ 5'-6\" A.F.F.		EXHAUST FAN AND LIGHT COMBINATION
	3-WAY SWITCH		FLUORESCENT LIGHT		CLG. MTD. EXHAUST FAN
	4-WAY SWITCH		UNDER CABINET LIGHTING		DATA JACK
	STAIR LIGHT				CABLE TELEVISION JACK
	BLOCK, MOUNT, & SWITCH FOR FUTURE FAN/LIGHT COMBINATION (CENTER, UNLESS OTHERWISE NOTED)				

Space for Architect Seal

RESIDENCE FOR:
MARKET
10468 FAIRBOURNE DRIVE
VILLAGES OF DECOURSEY

Job Number: VDY-0050-00	Drawing Date: 02.19.2025	Coord Name: L.RAMLER	Coord Phone: 859.578.4212
House Name: the GARRETT			Contract Drawn By: IES
			Series: CLASSIC
Born on Date: 02/01/2022			CDs Drawn By: WAB

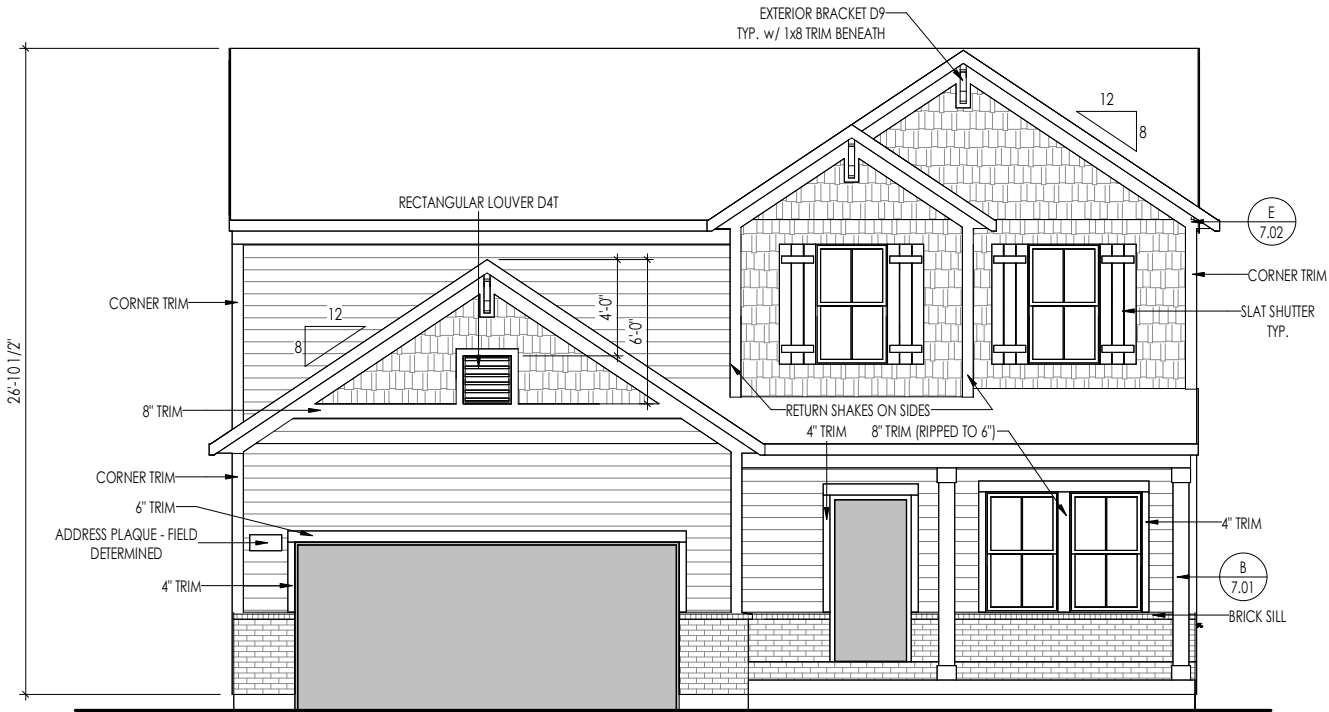
Copyright © 2021 (2022) The Drees Company. All Rights Reserved.
211 Grandview Drive, Fort Mitchell, KY 41017
Phone: [859] 578-4200

Sheet Information

4.02
Second Floor Mechanical Plan
Elevation "B"

I:\Cortado\16\WESTNORTH\K1\VD1\VDY-0050-00\VDY-0050-00.rvt

TYPICAL TRIM:
6" FASCIA (ALL SIDES)
8" FRIEZE (FRONT ONLY, UNLESS OTHERWISE NOTED)



ELEVATION 'B'

General Notes:

1. REFER TO SHEET ON.1 FOR GENERAL NOTES.
2. ROOFING MATERIAL PER SELECTIONS.
3. CONTACT M&K ENGINEERING FOR HEADER SIZE/BRICK SUPPORT IF GRADE DROPS AND THE AMOUNT OF BRICK OVER GARAGE DOOR SHOWN ON CURRENT ELEVATION IS NO LONGER ACCURATE
4. FRONT AND GARAGE DOORS PER SELECTIONS

Key Notes:

BRICK and STONE LINTEL SCHEDULE

	SPAN	36" HIGH	48" HIGH	LINTEL SIZE	WINDOW ABOVE
*BRICK	Up to 6'-0"	----	----	L3 1/2 x 3 1/2 x 1/4	----
	Up to 8'-3"	----	----	L5 x 3 1/2 x 5/16	----
	Up to 9'-3"	----	----	L6 x 4 x 5/16	L7 x 4 x 3/8
	Up to 16'-3"	L7 x 4 x 3/8	L8 x 4 x 1/2	L8 x 4 x 1/2	**per Design
*STONE	Up to 6'-0"	----	----	L4 x 3 1/2 x 1/4	----
	Up to 8'-3"	----	----	L5 x 3 1/2 x 5/16	----
	Up to 9'-3"	----	L6 x 4 x 3/8	L7 x 4 x 3/8	**per Design
	Up to 16'-3"	----	L8 x 4 x 1/2	**per Design	**per Design

All Lintels: 4" Minimum bearing required each end
*Brick is based on 40psf and Stone is based on 60psf
** Any lintels not described by the above parameters shall be specifically designed.

Space for Architect Seal

RESIDENCE FOR:

MARKET

10468 FAIRBOURNE DRIVE

VILLAGES OF DECOURSEY

Job Number: <div>VDY-0050-00</div>	Drawing Date: <div>02.19.2025</div>	Coord Name: <div>L.RAMLER</div>	Coord Phone: <div>859.578.4212</div>
House Name: <div>the GARRETT</div>			Contract Drawn By: <div>IES</div>
Born on Date: <div>02/01/2022</div>			CDs Drawn By: <div>WAB</div>

Drees

HOMESSM

Copyright © 2021 (2022) The Drees Company. All Rights Reserved.
211 Grandview Drive, Fort Mitchell, KY 41017
Phone: [859] 578-4200

Sheet Information

6.01

Front Elevation
Elevation "B"