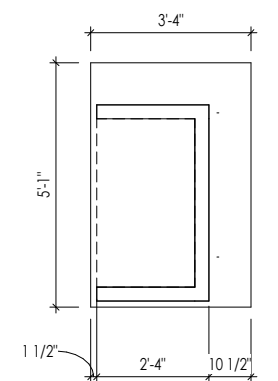
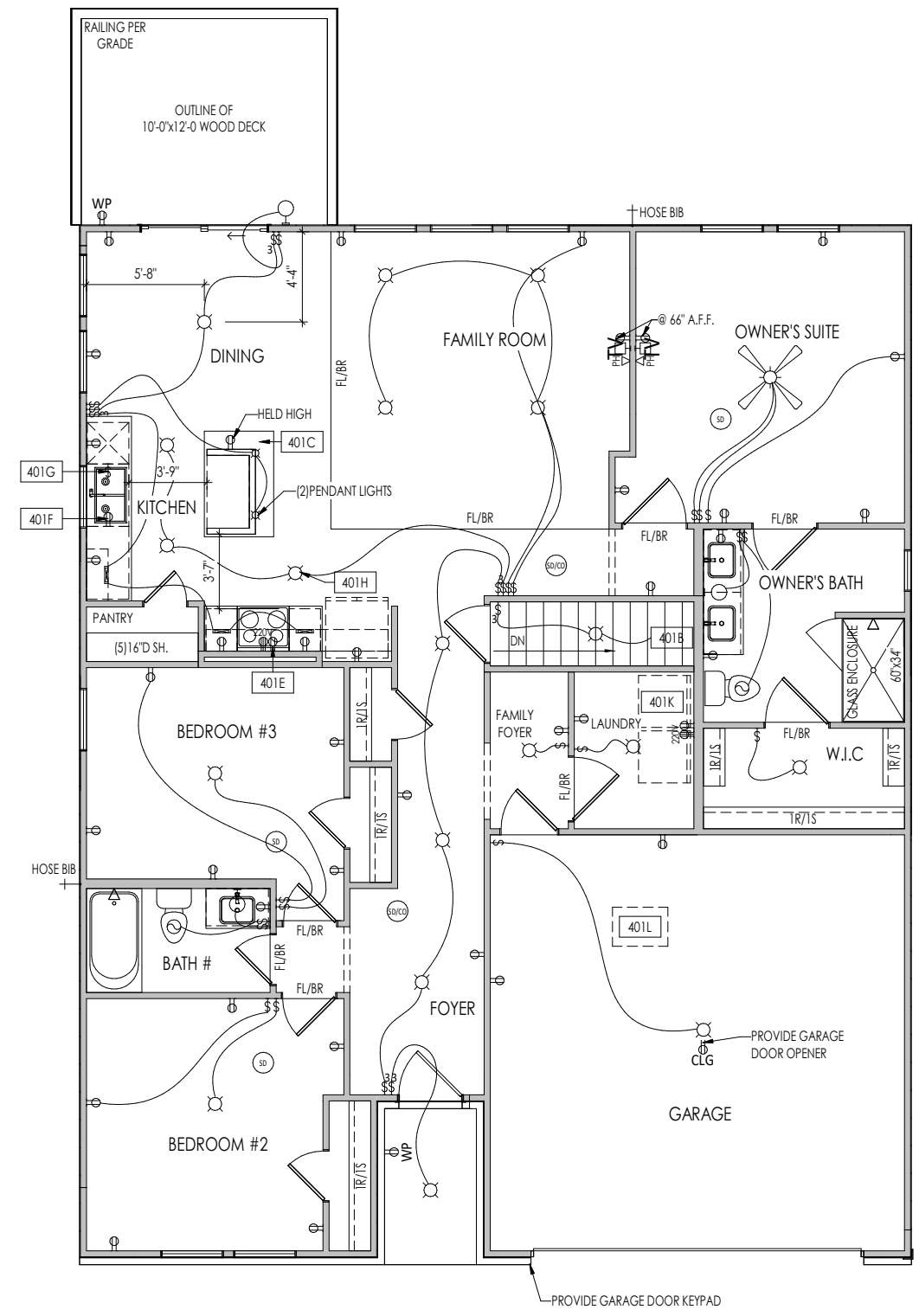


A KITCHEN LIGHTING DETAIL
4.01 1/4" = 1'-0"



B KITCHEN ISLAND DETAIL
4.01 1/4" = 1'-0"



- General Notes:**
- REFER TO SHEET ON.1 FOR GENERAL NOTES.
- Key Notes:**
- 401B TO SWITCH OR LIGHT BELOW
 - 401C SEE DETAIL B/4.01 FOR KITCHEN ISLAND COUNTERTOP DIMENSIONS
 - 401E OUTLET FOR RANGE HOOD/MICROWAVE HELD HIGH
 - 401F OUTLET FOR DISHWASHER LOCATED IN SINK CABINET
 - 401G PUSH BUTTON FOR GARBAGE DISPOSAL OR SWITCH LOCATED IN SINK CABINET - REFER TO SELECTIONS
 - 401H SEE DETAIL A/4.01 FOR KITCHEN LIGHTING DIMENSIONS
 - 401K LOCATE WASHER TO LEFT OF DRYER
 - 401L 22-1/2" x 32" ATTIC ACCESS PANEL IN CEILING

MECHANICAL LEGEND

◀ DATA JACK	○ CLG. MOUNTED LIGHT FIXT.	■ STAIR LIGHT
⊖ WALL OUTLET	○ SURFACE MOUNT DISC LIGHT OR RECESSED CEILING LIGHT, PER SPECS.	+ HOSE BIB
⊖ WEATHERPROOF GFCI OUTLET	○ WALL MOUNTED LIGHT FIXT.	△ SHOWER HEAD
⊖ 220 VOLT OUTLET	○ DOUBLE SPOTLIGHT FIXT.	⊖ GAS GAS HOOK UP
⊖ GFCI OUTLET	○ DIRECTIONAL CAN LIGHT	⊖ FLOOR DRAIN
⊖ FLOOR OUTLET	○ PIN LIGHT	⊖ SMOKE DETECTOR
⊖ CABLE TELEVISION JACK	○ WALL SCONCE @ 5'-6" A.F.F.	⊖ SMOKE DETECTOR/CO DETECTOR COMBINATION
⊖ SINGLE POLE SWITCH	○ FLUORESCENT LIGHT	⊖ EXHAUST FAN AND LIGHT COMBINATION
⊖ 3-WAY SWITCH	○ UNDER CABINET LIGHTING	⊖ CLG. MTD. EXHAUST FAN
⊖ 4-WAY SWITCH		
⊖ BLOCK, MOUNT, & SWITCH FOR FUTURE FAN/LIGHT COMBINATION (CENTER, UNLESS OTHERWISE NOTED)		

Space for Architect Seal

**RESIDENCE FOR:
MARKET**
3111 BELLEGLADE DRIVE
VILLAGES OF DECOURSEY

Job Number: VDY-0100-00	Drawing Date: 9/6/23	Coord Name: L. RAMLER	Coord Phone: 859.578.4212
House Name: the TRENT			Contract Drawn By: LJR
Born on Date: 06/08/2022			CDs Drawn By: SSP
Series: PURESTYLE			Plan No.: PLAN_NM

<p>Drees HOMES SM</p> <p><small>Copyright © 2022 2021 The Drees Company. All Rights Reserved. 211 Grandview Drive, Fort Mitchell, KY 41017 Phone: [859] 578-4200</small></p>	<p>Sheet Information</p> <p style="font-size: 2em; font-weight: bold;">4.01</p> <p>First Floor Mechanical Plan Elevation "B"</p>
---	--

TYPICAL TRIM:
6" FASCIA (ALL SIDES)
8" FRIEZE (FRONT ONLY, UNLESS OTHERWISE NOTED)

General Notes:

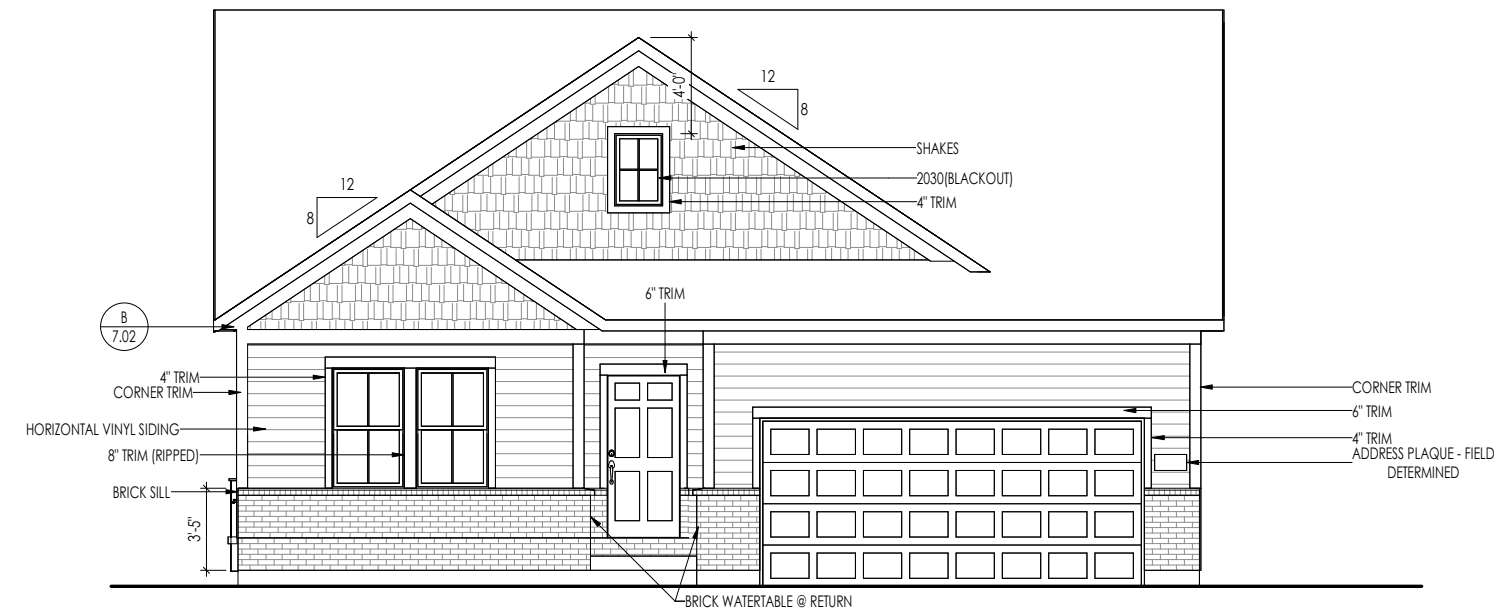
- REFER TO SHEET 0N.1 FOR GENERAL NOTES.
- ROOFING MATERIAL PER SELECTIONS.
- CONTACT M&K ENGINEERING FOR HEADER SIZE/BRICK SUPPORT IF GRADE DROPS AND THE AMOUNT OF BRICK OVER GARAGE DOOR SHOWN ON CURRENT ELEVATION IS NO LONGER ACCURATE

Key Notes:

BRICK VENEER LINTEL SCHEDULE		
SPAN	STEEL ANGLE SIZE	HEIGHT OF VENEER ABOVE LINTEL
Up to 3'-6"	L3-1/2 x3-1/2 x1/4	20 FT. MAX
Up to 6'-0"	L5x 3- 1/2x 5/16 (LLV)	20 FT. MAX
Up to 8'-0"	L6x 3- 1/2x 3/8 (LLV)	20 FT. MAX
9'-0"	L7x 4x 3/8 (LLV)	12 FT. MAX
*16'-0"	L7x 4x 3/8 (LLV)	3 FT. MAX
*16'-0"	L8x 4x 1/2 (LLV)	4-1/2 FT. MAX

ALL LINTELS <=6' SHALL HAVE 4" MINIMUM BEARING AT EACH END.
 ALL LINTELS >=6' SHALL HAVE 8" MINIMUM BEARING AT EACH END.
 * FASTENED TO HDR @ 1/3 SPAN POINTS THRU 1-1/2" LONG VERTICALLY SLOTTED HOLES IN LINTEL w/ 1/2" DIA. x 3-1/2" LONG LAG SCREWS. LOCATE LAG SCREWS @ MIDDLE OF SLOTTED HOLE & TIGHTEN SCREWS ENOUGH TO ALLOW MOVEMENT OF LINTEL.
 ***ANY LINTEL CONDITION NOT SPECIFIED ABOVE SHALL BE DESIGNED

Space for Architect Seal



ELEVATION 'B'

RESIDENCE FOR:
MARKET
 3111 BELLEGLADE DRIVE
 VILLAGES OF DECOURSEY

Job Number: VDY-0100-00	Drawing Date: 9/6/23	Coord Name: L. RAMLER	Coord Phone: 859.578.4212
House Name: the TRENT			Contract Drawn By: LJR
Born on Date: 06/08/2022			CDs Drawn By: SSP
Series: PURESTYLE			Plan No.: PLAN_NM

<p>Drees HOMES <small>Copyright © 2022 (2021) The Drees Company. All Rights Reserved. 211 Grandview Drive, Fort Mitchell, KY 41017 Phone: [859] 578-4200</small></p>	Sheet Information	6.01
		Front Elevation Elevation "B"