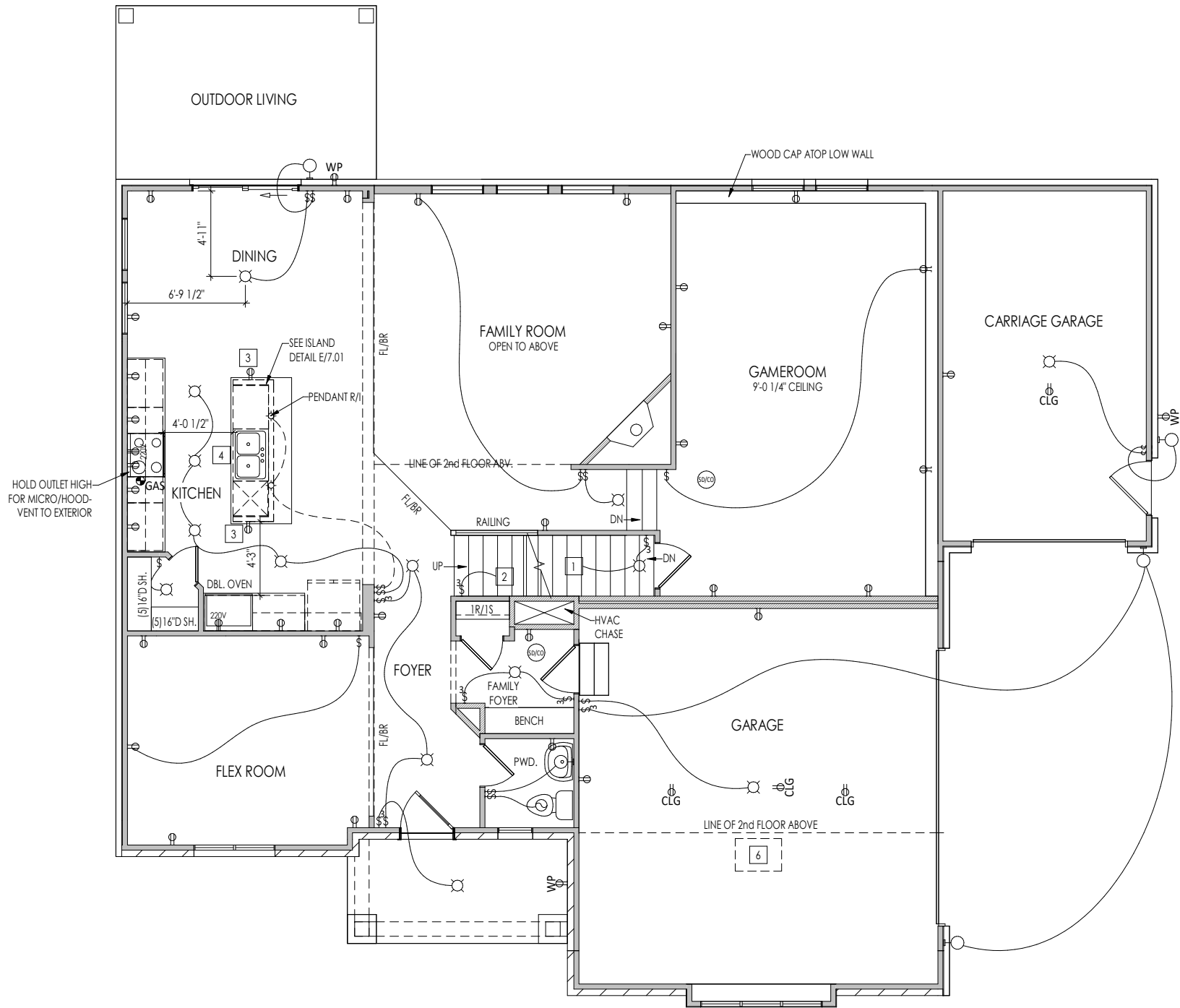


I:\Contracted\MD\WEST\INDIANAPOLIS\VPEN\VPEN-029-00\VPEN-029-00-Adj.dwg



General Notes:

1. REFER TO SHEET ON.1 FOR GENERAL NOTES.

Key Notes:

- 1
- TO SWITCH OR LIGHT BELOW

2

3

4

5

6

7

8

9

10

MECHANICAL LEGEND

- ◀ PHONE JACK
- ⊕ WALL OUTLET
- ⊕ WEATHERPROOF OUTLET
- ⊕ 220 VOLT OUTLET
- ⊕ GROUND FAULT OUTLET
- ⊕ FLOOR OUTLET
- TV CABLE TELEVISION JACK
- ↔ SINGLE POLE SWITCH
- ↔ 3-WAY SWITCH
- ↔ 4-WAY SWITCH
- ⊕ BLOCK, MOUNT, & SWITCH FOR FUTURE FAN/LIGHT COMBINATION (CENTER, UNLESS OTHERWISE NOTED)
- ⊕ CLG. MOUNTED LIGHT FIXT.
- SURFACE MOUNT DOWN-LIGHT OR RECESSED CEILING LIGHT, PER SPECS.
- ⊕ WALL MOUNTED LIGHT FIXT.
- ⊕ DOUBLE SPOTLIGHT FIXT.
- ⊕ DIRECTIONAL CAN LIGHT
- ⊕ PIN LIGHT
- ⊕ WALL SCONCE @ 5'-6" A.F.F.
- ⊕ FLUORESCENT LIGHT
- ⊕ UNDER CABINET LIGHTING
- ⊕ STAIR LIGHT
- ⊕ HOSE BIB
- ⊕ SHOWER HEAD
- ⊕ GAS GAS HOOK UP
- ⊕ FLOOR DRAIN
- ⊕ SMOKE DETECTOR
- ⊕ CO DETECTOR
- ⊕ SMOKE DETECTOR/CO DETECTOR COMBINATION
- ⊕ EXHAUST FAN AND LIGHT COMBINATION
- ⊕ CLG. MTD. EXHAUST FAN

Space for Architect Seal

RESIDENCE FOR:  
**MARKET**  
9196 COOPERS LANE  
VINTNERS PARK ESTATES

Job Number: <b>VPE9-0029-00</b>	Drawing Date: <b>5/22/23</b>	Coord Name: <b>L. RAMLER</b>	Coord Phone: <b>859.578.4290</b>
------------------------------------	---------------------------------	---------------------------------	-------------------------------------

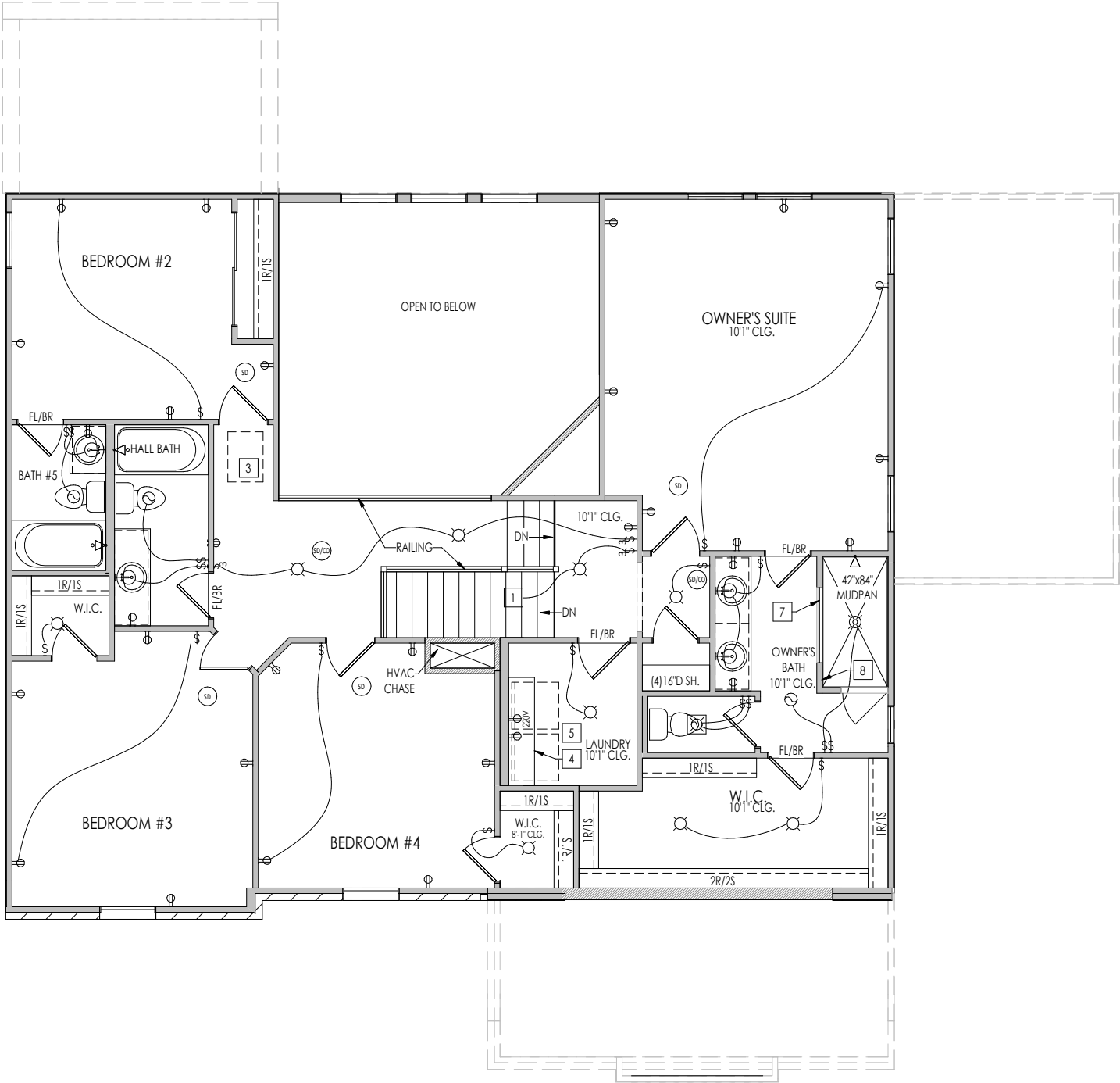
House Name:	Drawing Scale: 1/8" = 1' 0"	Contract Drawn By: <b>LJR</b>
-------------	-----------------------------	----------------------------------

<b>ALDEN</b>	Series: <b>SERIES_NM</b>
--------------	-----------------------------

Plan No.: <b>PLAN_NM</b>
-----------------------------

<div><div><div></div><div><b>Drees</b></div><div>HOMES<sup>SM</sup></div></div><div><div>Copyright © 2018 ( 2022 ) The Drees Company. All Rights Reserved. 900 East 96th Street, Suite 100, Indianapolis, IN 46240 Phone: [317] 347-7300</div></div></div>	Sheet Information	<div><div><b>4.01</b></div><div>First Floor Mechanical Plan Elevation "F"</div></div>
--	-------------------	---

5/22/2023 4:31:02 PM



General Notes:

1. REFER TO SHEET 0N.1 FOR GENERAL NOTES.

Key Notes:

- 1 TO LIGHT OR SWITCH BELOW
- 2 36" HIGH WALL W/ WOOD CAP
- 3 22-1/2"x32" ATTIC ACCESS
- 4 5/8" SHELF @ 57" A.F.F.
- 5 WASHER TO LEFT OF DRYER
- 6 --
- 7 8' TALL PIECE OF GLASS
- 8 LOCATE SHOWER CONTROLS HERE
- 9 --
- 10 --

MECHANICAL LEGEND

- |  |   |  |
|--|---|--|
| ◀ PHONE JACK   | CLG. MOUNTED LIGHT FIXT.                                      | STAIR LIGHT                            |
| WALL OUTLET  | SURFACE MOUNT DOWN-LIGHT OR RECESSED CBLING LIGHT, PER SPECS. | HOSE BIB                               |
| WEATHERPROOF OUTLET  | WALL MOUNTED LIGHT FIXT.                                      | SHOWER HEAD                            |
| 220 VOLT OUTLET  | DOUBLE SPOTLIGHT FIXT.  | GAS GAS HOOK UP                        |
| GROUND FAULT OUTLET  | DIRECTIONAL CAN LIGHT   | FLOOR DRAIN                            |
| FLOOR OUTLET   | PIN LIGHT   | SMOKE DETECTOR                         |
| CABLE TELEVISION JACK  | WALL SCONCE @ 5'-6" A.F.F.                                    | CO DETECTOR                            |
| SINGLE POLE SWITCH   | FLUORESCENT LIGHT   | SMOKE DETECTOR/CO DETECTOR COMBINATION |
| 3-WAY SWITCH   | UNDER CABINET LIGHTING  | EXHAUST FAN AND LIGHT COMBINATION      |
| 4-WAY SWITCH   |   | CLG. MTD. EXHAUST FAN                  |
| BLOCK, MOUNT, & SWITCH FOR FUTURE FAN/LIGHT COMBINATION (CENTER, UNLESS OTHERWISE NOTED) |   |  |

Space for Architect Seal

RESIDENCE FOR:  
**MARKET**  
9196 COOPERS LANE  
VINTNERS PARK ESTATES

Job Number: <b>VPE9-0029-00</b>	Drawing Date: <b>5/22/23</b>	Coord Name: <b>L. RAMLER</b>	Coord Phone: <b>859.578.4290</b>
House Name: <b>ALDEN</b>			Contract Drawn By: <b>LJR</b>
			Series: <b>SERIES_NM</b>
Born on Date: 08.28.18			CDs Drawn By: BLC
			Plan No.: <b>PLAN_NM</b>

**Drees**  
HOMES<sup>SM</sup>

Copyright © 2018 ( 2022 ) The Drees Company. All Rights Reserved.  
900 East 96th Street, Suite 100, Indianapolis, IN 46240  
Phone: [317] 347-7300

Sheet Information

**4.02**  
Second Floor Mechanical Plan  
Elevation "F"

5/22/2023 1:01:02 PM

<b>TYPICAL TRIM:</b>
<b>6" FASCIA</b> (ALL SIDES)
<b>8" FRIEZE</b> (FRONT ONLY, UNLESS OTHERWISE NOTED)

General Notes:

1. REFER TO SHEET ON.1 FOR GENERAL NOTES.  
2. ROOFING MATERIAL PER SELECTIONS.

Key Notes:

- 1  
2  
3 --  
4 --  
5 --

BRICK and STONE LINTEL SCHEDULE

	SPAN	36" HIGH	48" HIGH	LINTEL SIZE	WINDOW ABOVE
*BRICK	Up to 6'-0"	----	----	L3 1/2 x 3 1/2 x 1/4	----
	Up to 8'-3"	----	----	L5 x 3 1/2 x 5/16	----
	Up to 9'-3"	----	----	L6 x 4 x 5/16	L7 x 4 x 3/8
	Up to 16'-3"	L7 x 4 x 3/8	L8 x 4 x 1/2	L8 x 4 x 1/2	**per Design
*STONE	Up to 6'-0"	----	----	L4 x 3 1/2 x 1/4	----
	Up to 8'-3"	----	----	L5 x 3 1/2 x 5/16	----
	Up to 9'-3"	----	L6 x 4 x 3/8	L7 x 4 x 3/8	**per Design
	Up to 16'-3"	----	L8 x 4 x 1/2	**per Design	**per Design

All Lintels: 4" Minimum bearing required each end  
\* Brick is based on 40psf and Stone is based on 60psf  
\*\* Any lintels not described by the above parameters shall be specifically designed.

Space for Architect Seal

RESIDENCE FOR:  
**MARKET**  
9196 COOPERS LANE  
VINTNERS PARK ESTATES

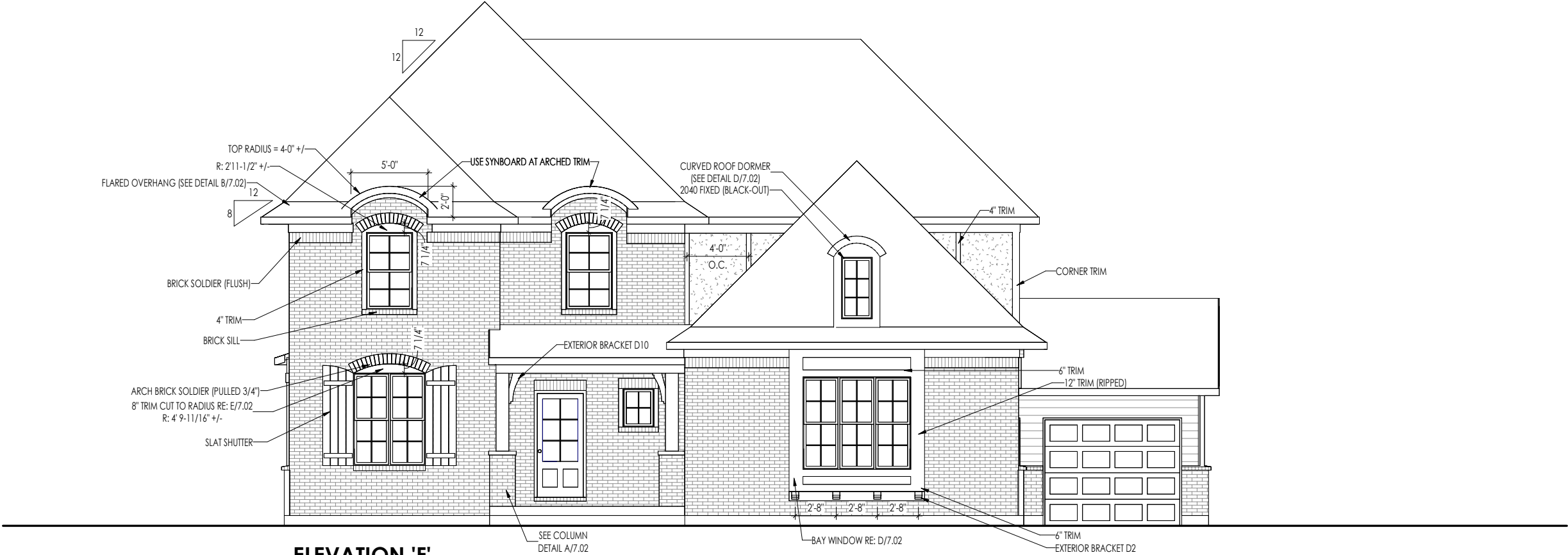
Job Number: <b>VPE9-0029-00</b>	Drawing Date: <b>5/22/23</b>	Coord Name: <b>L. RAMLER</b>	Coord Phone: <b>859.578.4290</b>
House Name: <b>ALDEN</b>			Contract Drawn By: <b>LJR</b>
			Series: <b>SERIES_NM</b>
Born on Date: 08.28.18			Plan No.: <b>PLAN_NM</b>

**Drees**  
HOMES<sup>SM</sup>

Copyright © 2018 ( 2022 ) The Drees Company. All Rights Reserved.  
900 East 96th Street, Suite 100, Indianapolis, IN 46240  
Phone: [317] 347-7300

Sheet Information

**6.01**  
Front Elevation  
Elevation "F"



**ELEVATION 'F'**