

General Notes:

1. REFER TO SHEET ON.1 FOR GENERAL NOTES.

Key Notes:

- 1 TO SWITCH ABOVE
- 2 -
- 3 -
- 4 -
- 5 ROUGH-IN WET BAR: STUB PLUMBING THRU FLOOR ONLY - NO FIXTURES OR SUPPLY LINES
- 6 -
- 7 -
- 8 -
- 9 -
- 10 -

MECHANICAL LEGEND

- | | | |
|--|--|--|
| ◀ DATA JACK | CLG. MOUNTED LIGHT FIXT. | STAIR LIGHT |
| WALL OUTLET | SURFACE MOUNT DISC LIGHT OR RECESSED CEILING LIGHT, PER SPECS. | HOSE BIB |
| WEATHERPROOF OUTLET | WALL MOUNTED LIGHT FIXT. | SHOWER HEAD |
| 220 VOLT OUTLET | DOUBLE SPOTLIGHT FIXT. | GAS HOOK UP |
| GROUND FAULT OUTLET | DIRECTIONAL CAN LIGHT | FLOOR DRAIN |
| FLOOR OUTLET | PIN LIGHT | SMOKE DETECTOR |
| CABLE TELEVISION JACK | WALL SCONCE @ 5'-6" A.F.F. | CO DETECTOR |
| SINGLE POLE SWITCH | FLUORESCENT LIGHT | SMOKE DETECTOR/CO DETECTOR COMBINATION |
| 3-WAY SWITCH | UNDER CABINET LIGHTING | EXHAUST FAN AND LIGHT COMBINATION |
| 4-WAY SWITCH | | CLG. MTD. EXHAUST FAN |
| BLOCK, MOUNT, & SWITCH FOR FUTURE FAN/LIGHT COMBINATION (CENTER, UNLESS OTHERWISE NOTED) | | |

Space for Architect Seal

RESIDENCE FOR:

Model

9061 Vintners Park Boulevard

Vintner's Park Estates, McCordsville IN

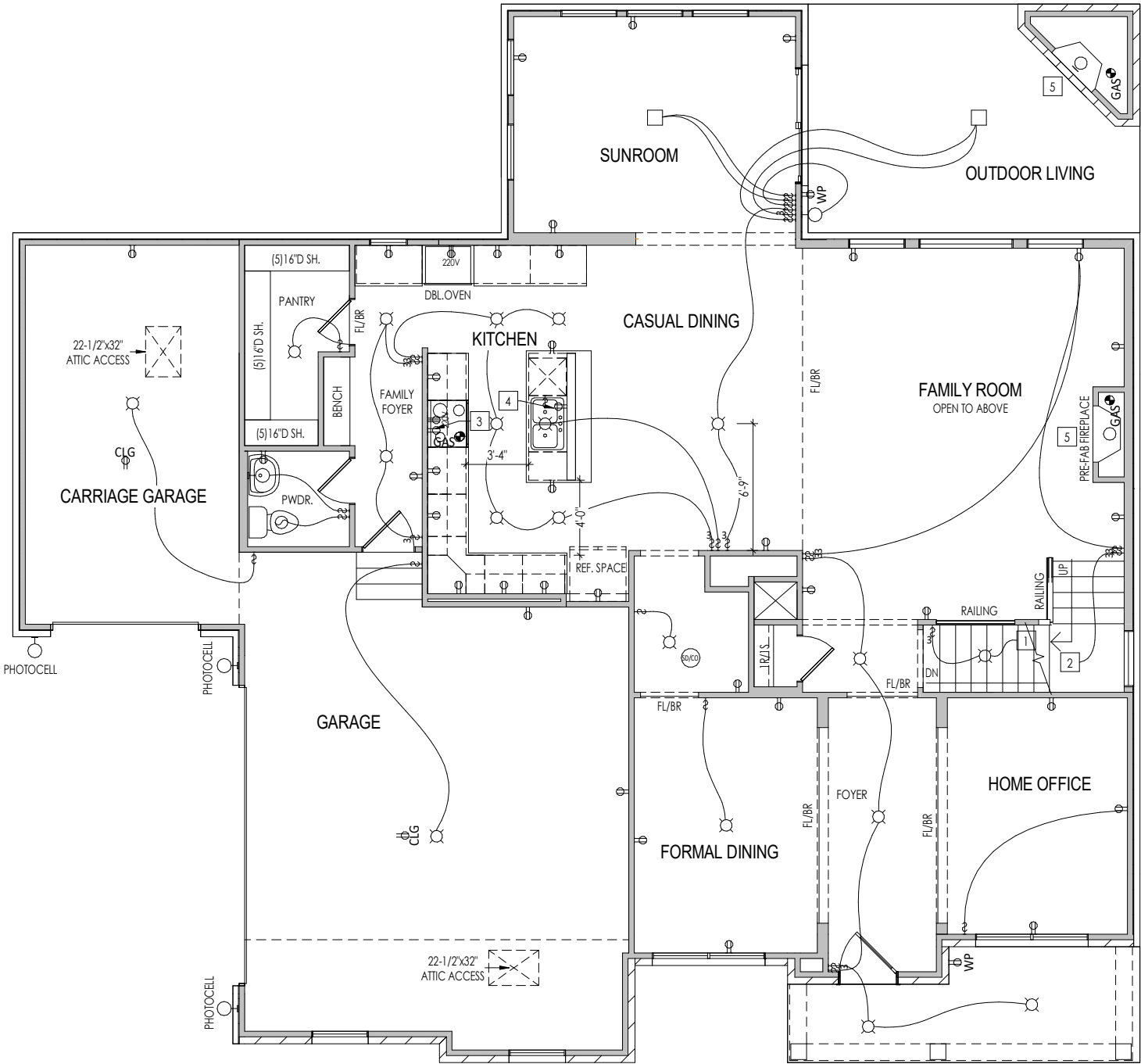
Job Number:	Drawing Date:	Coord Name:	Coord Phone:
VPE9-0055-00	12/07/23	Luke R.	859 578-4212

House Name:	Drawing Scale: 1/8" = 1'0"	Contract Drawn By:
		Brian W.

the BUCHANAN	Series:
	N/A

Born on Date:	08/27/2010	CDs Drawn By:	SSP	Plan No.:
				N/A

 Copyright © 2010 (2019) The Drees Company. All Rights Reserved. 900 East 96th Street, Suite 100, Indianapolis, IN 46240 Phone: [317] 347-7300	Sheet Information	1.03 Lower Level Mechanical Plan Elevation "Q"
--	-------------------	--



General Notes:

1. REFER TO SHEET ON.1 FOR GENERAL NOTES.

Key Notes:

- 1 TO SWITCH OR LIGHT BELOW
- 2 TO SWITCH OR LIGHT ABOVE
- 3 OUTLET FOR RANGE HOOD/MICROWAVE HELD HIGH - VENT TO EXTERIOR
- 4 OUTLET FOR DISHWASHER & SWITCH FOR DISPOSAL LOCATED IN SINK CABINET
- 5 DIRECT VENT FIREPLACE - REFER TO SELECTION SHEET FOR MODEL AND FIREPLACE DETAIL SHEET F-1 FOR FRAMING INFORMATION
- 6 -
- 7 -
- 8 -
- 9 -
- 10 -

MECHANICAL LEGEND

- DATA JACK
- WALL OUTLET
- WEATHERPROOF OUTLET
- 220 VOLT OUTLET
- GROUND FAULT OUTLET
- FLOOR OUTLET
- CABLE TELEVISION JACK
- SINGLE POLE SWITCH
- 3-WAY SWITCH
- 4-WAY SWITCH
- BLOCK, MOUNT, & SWITCH FOR FUTURE FAN/LIGHT COMBINATION (CENTER, UNLESS OTHERWISE NOTED)
- CLG. MOUNTED LIGHT FIXT.
- SURFACE MOUNT DISC LIGHT OR RECESSED CEILING LIGHT, PER SPECS.
- WALL MOUNTED LIGHT FIXT.
- DOUBLE SPOTLIGHT FIXT.
- DIRECTIONAL CAN LIGHT
- PIN LIGHT
- WALL SCONCE @ 5'-6" A.F.F.
- FLUORESCENT LIGHT
- UNDER CABINET LIGHTING
- STAIR LIGHT
- HOSE BIB
- SHOWER HEAD
- GAS HOOK UP
- FLOOR DRAIN
- SMOKE DETECTOR
- CO DETECTOR
- SMOKE DETECTOR/CO DETECTOR COMBINATION
- EXHAUST FAN AND LIGHT COMBINATION
- CLG. MTD. EXHAUST FAN

Space for Architect Seal

RESIDENCE FOR:

Model

9061 Vintners Park Boulevard
Vintner's Park Estates, McCordsville IN

Job Number: VPE9-0055-00	Drawing Date: 12/07/23	Coord Name: Luke R.	Coord Phone: 859 578-4212
House Name: the BUCHANAN			Contract Drawn By: Brian W.
			Series: N/A
Born on Date: 08/27/2010			CDs Drawn By: SSP
			Plan No.: N/A

Drees

HOMES

Copyright © 2010 (2019) The Drees Company. All Rights Reserved.

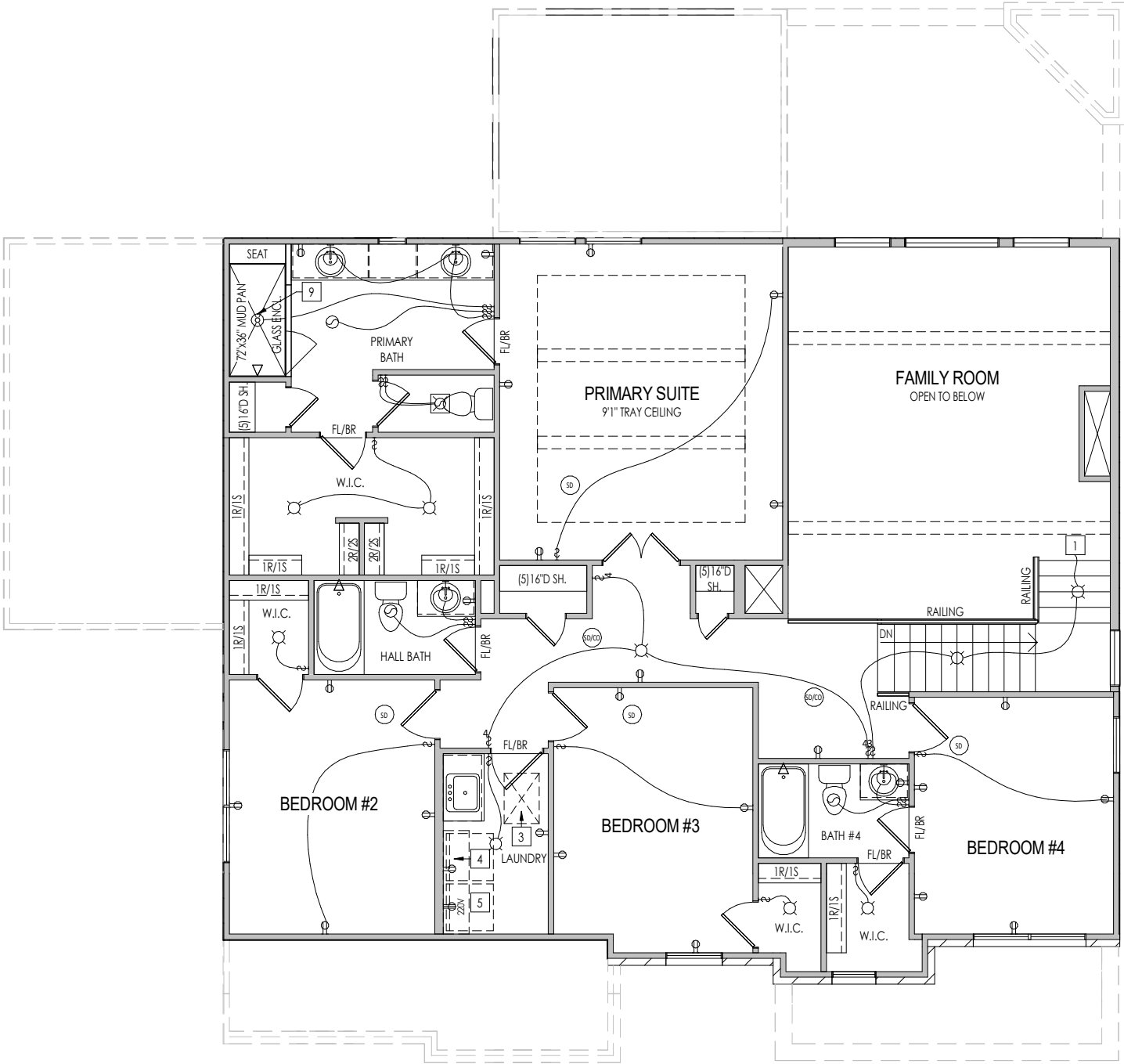
900 East 96th Street, Suite 100, Indianapolis, IN 46240

Phone: [317] 347-7300

Sheet Information

4.01

First Floor Mechanical Plan
Elevation "Q"



General Notes:

1. REFER TO SHEET ON.1 FOR GENERAL NOTES.

Key Notes:

1

TO LIGHT OR SWITCH BELOW

2

--

3

22-1/2"x32" ATTIC ACCESS

4

5/8" SHELF @ 57" A.F.F.

5

WASHER TO LEFT OF DRYER

6

--

7

--

8

44" HIGH WALL

9

RAIN CAN SHOWER HEAD

10

--

MECHANICAL LEGEND

◀

DATA JACK

⊖

WALL OUTLET

⊖

WEATHERPROOF OUTLET

⊖

220 VOLT OUTLET

⊖

GROUND FAULT OUTLET

⊖

FLOOR OUTLET

⊖

CABLE TELEVISION JACK

↔

SINGLE POLE SWITCH

↔

3-WAY SWITCH

↔

4-WAY SWITCH

Ⓜ

BLOCK, MOUNT, & SWITCH FOR FUTURE FAN/LIGHT COMBINATION (CENTER, UNLESS OTHERWISE NOTED)

◯

CLG. MOUNTED LIGHT FIXT.

◯

SURFACE MOUNT DISC LIGHT OR RECESSED CEILING LIGHT, PER SPECS.

◯

WALL MOUNTED LIGHT FIXT.

⊕

DOUBLE SPOTLIGHT FIXT.

◐

DIRECTIONAL CAN LIGHT

●

PIN LIGHT

◯

WALL SCONCE @ 5'-6" A.F.F.

◯

FLUORESCENT LIGHT

—

UNDER CABINET LIGHTING

■

STAIR LIGHT

+

HOSE BIB

◁

SHOWER HEAD

⊕

GAS GAS HOOK UP

⊕

FLOOR DRAIN

Ⓜ

SMOKE DETECTOR

Ⓜ

CO DETECTOR

Ⓜ

SMOKE DETECTOR/CO DETECTOR COMBINATION

Ⓜ

EXHAUST FAN AND LIGHT COMBINATION

⌚

CLG. MTD. EXHAUST FAN

Space for Architect Seal

RESIDENCE FOR:

Model

9061 Vintners Park Boulevard

Vintner's Park Estates, McCordsville IN

Job Number:

VPE9-0055-00

Drawing Date:

12/07/23

Coord Name:

Luke R.

Coord Phone:

859 578-4212

House Name:

the BUCHANAN

Drawing Scale:

1/8" = 1'0"

Contract Drawn By:

Brian W.

Series:

N/A

Plan No.:

N/A

Born on Date:

08/27/2010

CDs Drawn By:

SSP

SSP

Drees

HOMESSM

Copyright © 2010 (2019) The Drees Company. All Rights Reserved.
900 East 96th Street, Suite 100, Indianapolis, IN 46240
Phone: [317] 347-7300

Sheet Information

4.02

Second Floor Mechanical Plan
Elevation "Q"

TYPICAL TRIM:

6" FASCIA
(ALL SIDES)

8" FRIEZE
(FRONT ONLY, UNLESS OTHERWISE NOTED)

General Notes:

1. REFER TO SHEET ON.1 FOR GENERAL NOTES.
2. ROOFING MATERIAL PER SELECTIONS.

Key Notes:

- 1 --
2 --
3 --
4 --
5 --

BRICK VENEER LINTEL SCHEDULE

SPAN	STEEL ANGLE SIZE	HEIGHT OF VENEER ABOVE LINTEL
Up to 3'-6"	L3- 1/2 x3- 1/2 x1/4	20 FT. MAX
Up to 6'-0"	L5x 3- 1/2x 5/16 (LLV)	20 FT. MAX
Up to 8'-0"	L6x 3- 1/2x 3/8 (LLV)	20 FT. MAX
9'-0"	L7x 4x 3/8 (LLV)	12 FT. MAX
*16'-0"	L7x 4x 3/8 (LLV)	3 FT. MAX
*16'-0"	L8x 4x 1/2 (LLV)	4-1/2 FT. MAX

ALL LINTELS <=6' SHALL HAVE 4" MINIMUM BEARING AT EACH END.
ALL LINTELS >=6' SHALL HAVE 8" MINIMUM BEARING AT EACH END.
* FASTENED TO HDR @ 1/3 SPAN POINTS THRU 1-1/2 " LONG VERTICALLY SLOTTED HOLES IN LINTEL w/ 1/2" DIA. x 3-1/2 " LONG LAG SCREWS. LOCATE LAG SCREWS @ MIDDLE OF SLOTTED HOLE & TIGHTEN SCREWS ENOUGH TO ALLOW MOVEMENT OF LINTEL.
***ANY LINTEL CONDITION NOT SPECIFIED ABOVE SHALL BE DESIGNED

Space for Architect Seal

RESIDENCE FOR:

Model

9061 Vintners Park Boulevard
Vintner's Park Estates, McCordsville IN

Job Number: VPE9-0055-00	Drawing Date: 12/07/23	Coord Name: Luke R.	Coord Phone: 859 578-4212
House Name: the BUCHANAN			Contract Drawn By: Brian W.
			Series: N/A
Born on Date: 08/27/2010			Plan No.: N/A

Drees
HOMESSM
Copyright © 2010 (2019) The Drees Company. All Rights Reserved.
900 East 96th Street, Suite 100, Indianapolis, IN 46240
Phone: [317] 347-7300

Sheet Information

6.01
Front Elevation
Elevation "Q"



DROPPED BRICK TO GRADE
- FIELD DETERMINE