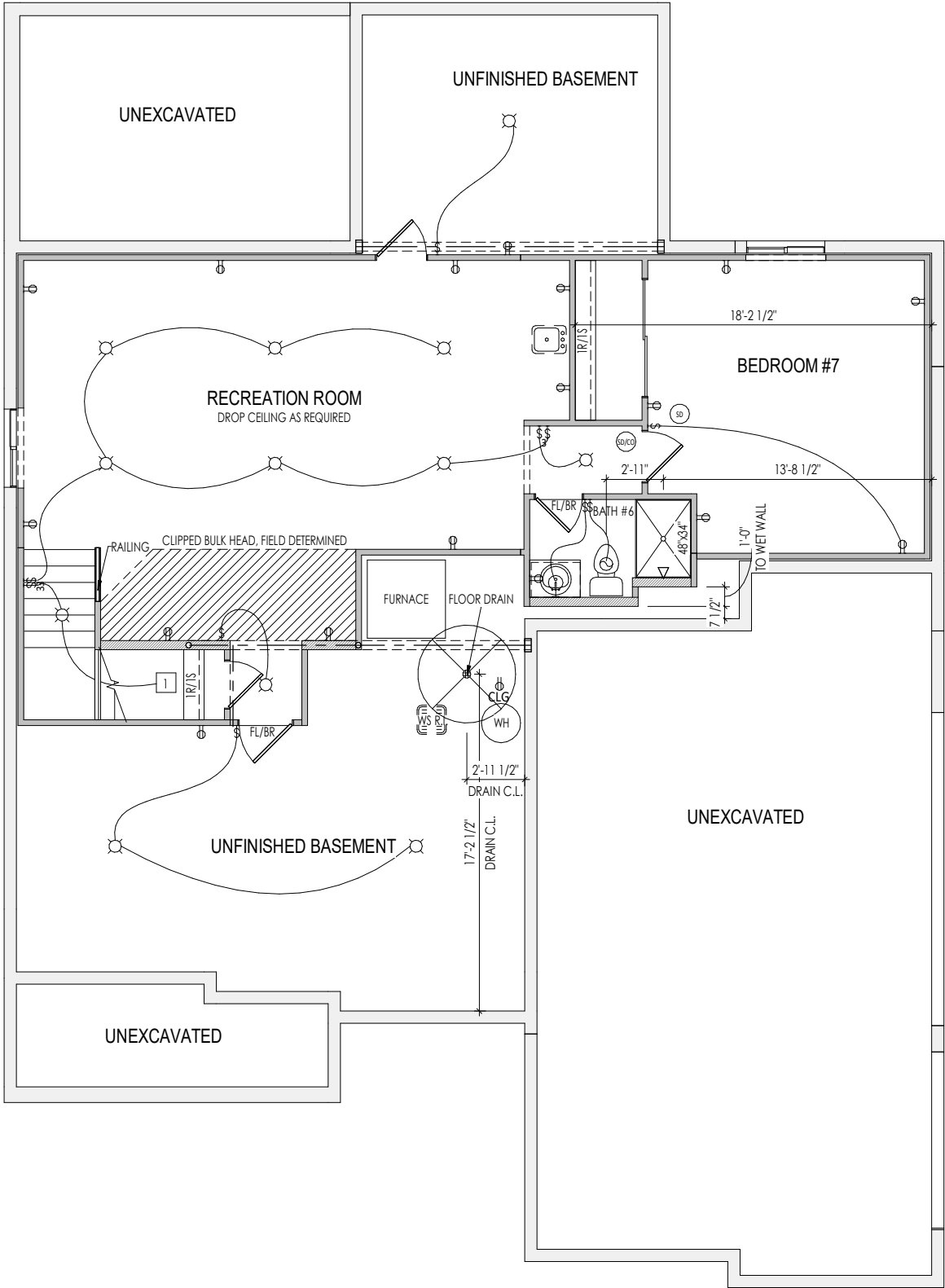


PROVIDE PASSIVE RADON
SYSTEM ROUGH-IN



General Notes:

1. REFER TO SHEET ON.1 FOR GENERAL NOTES.

Key Notes:

- 1
- TO SWITCH ABOVE

2

3

4

5

6

7

8

9

10

MECHANICAL LEGEND

- WALL OUTLET

WEATHERPROOF GFCI OUTLET

220 VOLT OUTLET

GFCI OUTLET

FLOOR OUTLET

COUNTER POP-UP OUTLET

SINGLE POLE SWITCH

3-WAY SWITCH

4-WAY SWITCH

STAIR LIGHT

BLOCK, MOUNT, & SWITCH FOR FUTURE FAN/LIGHT COMBINATION (CENTER, UNLESS OTHERWISE NOTED)
- CLG. MOUNTED LIGHT FIXT.

SURFACE MOUNT DISC LIGHT OR RECESSED CEILING LIGHT, PER SPECS.

WALL MOUNTED LIGHT FIXT.

DOUBLE SPOTLIGHT FIXT.

DIRECTIONAL CAN LIGHT

PIN LIGHT

WALL SCONCE @ 5'-6" A.F.F.

FLUORESCENT LIGHT

UNDER CABINET LIGHTING
- HOSE BIB

SHOWER HEAD

GAS GAS HOOK UP

FLOOR DRAIN

SMOKE DETECTOR

SMOKE DETECTOR/CO DETECTOR COMBINATION

EXHAUST FAN AND LIGHT COMBINATION

CLG. MTD. EXHAUST FAN

DATA JACK

CABLE TELEVISION JACK

Space for Architect Seal

RESIDENCE FOR:
MARKET
1919 DELP COURT
WHITE OAK ESTATES

Job Number: WHOE-0003-00	Drawing Date: 2/11/25	Coord Name: LUKE RAMLER	Coord Phone: 859-578-4212
------------------------------------	---------------------------------	-----------------------------------	-------------------------------------

House Name:	Drawing Scale: 1/8" = 1'0"	Contract Drawn By: HMA
-------------	----------------------------	----------------------------------

the BUCHANAN

Born on Date: 08/27/2010	CDs Drawn By: SSP	Plan No.:
-----------------------------	----------------------	-----------

Drees

HOMES

SM

Copyright © 2010 (2019) The Drees Company. All Rights Reserved.

900 East 96th Street, Suite 100, Indianapolis, IN 46240

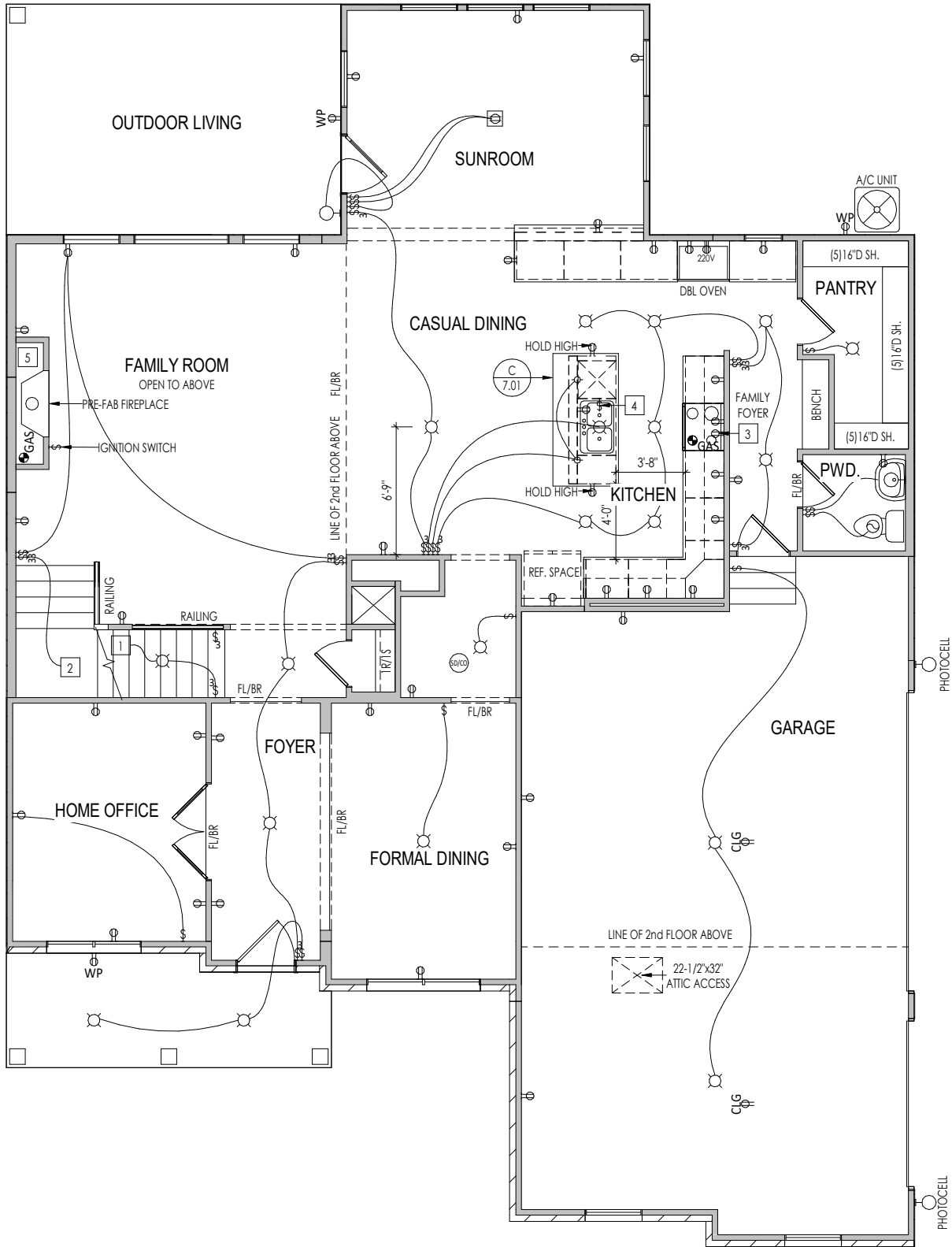
Phone: [317] 347-7300

Sheet Information

1.03
Lower Level Mechanical Plan
Elevation "U"

2/20/2025 10:44:25 AM

PROVIDE PASSIVE RADON
SYSTEM ROUGH-IN



General Notes:

1. REFER TO SHEET ON.1 FOR GENERAL NOTES.

Key Notes:

- 1
- TO SWITCH OR LIGHT BELOW
- 2
- TO SWITCH OR LIGHT ABOVE
- 3
- OUTLET FOR RANGE HOOD/MICROWAVE HELD HIGH - VENT TO EXTERIOR
- 4
- OUTLET FOR DISHWASHER & SWITCH FOR DISPOSAL LOCATED IN SINK CABINET
- 5
- REFER TO SELECTION SHEET FOR MODEL AND FIREPLACE DETAIL SHEET F-1 FOR FRAMING INFORMATION
- 6
-
- 7
-
- 8
-
- 9
-
- 10
-

MECHANICAL LEGEND

- WALL OUTLET
- WEATHERPROOF GFCI OUTLET
- 220 VOLT OUTLET
- GFCI OUTLET
- FLOOR OUTLET
- COUNTER POP-UP OUTLET
- SINGLE POLE SWITCH
- 3-WAY SWITCH
- 4-WAY SWITCH
- STAIR LIGHT
- BLOCK, MOUNT, & SWITCH FOR FUTURE FAN/LIGHT COMBINATION (CENTER, UNLESS OTHERWISE NOTED)
- CLG. MOUNTED LIGHT FIXT.
- SURFACE MOUNT DISC LIGHT OR RECESSED CEILING LIGHT, PER SPECS.
- WALL MOUNTED LIGHT FIXT.
- DOUBLE SPOTLIGHT FIXT.
- DIRECTIONAL CAN LIGHT
- PIN LIGHT
- WALL SCONCE @ 5'-6" A.F.F.
- FLUORESCENT LIGHT
- UNDER CABINET LIGHTING
- HOSE BIB
- SHOWER HEAD
- GAS HOOK UP
- FLOOR DRAIN
- SMOKE DETECTOR
- SMOKE DETECTOR/CO DETECTOR COMBINATION
- EXHAUST FAN AND LIGHT COMBINATION
- CLG. MTD. EXHAUST FAN
- DATA JACK
- CABLE TELEVISION JACK

Space for Architect Seal

RESIDENCE FOR:
MARKET
1919 DELP COURT
WHITE OAK ESTATES

Job Number: WHOE-0003-00	Drawing Date: 2/11/25	Coord Name: LUKE RAMLER	Coord Phone: 859-578-4212
------------------------------------	---------------------------------	-----------------------------------	-------------------------------------

House Name:	Drawing Scale: 1/8" = 1'0"	Contract Drawn By: HMA
-------------	----------------------------	----------------------------------

the BUCHANAN	Series: II
---------------------	----------------------

Born on Date: 08/27/2010	CDs Drawn By: SSP	Plan No.:
--------------------------	-------------------	-----------

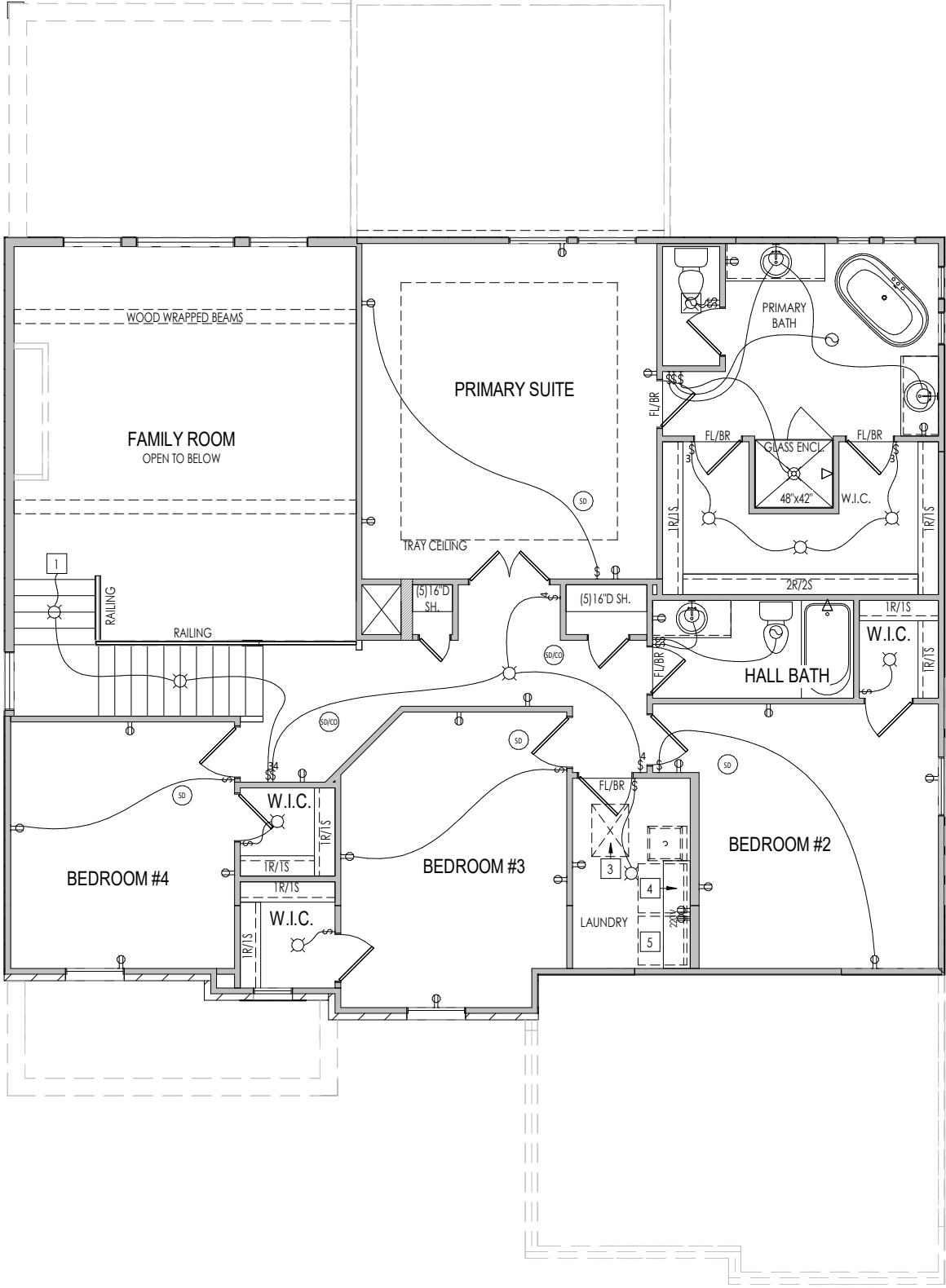
Copyright © 2010 (2019) The Drees Company. All Rights Reserved.
900 East 96th Street, Suite 100, Indianapolis, IN 46240
Phone: [317] 347-7300

Sheet Information

4.01

First Floor Mechanical Plan
Elevation "U"

PROVIDE PASSIVE RADON
SYSTEM ROUGH-IN



General Notes:

1. REFER TO SHEET ON.1 FOR GENERAL NOTES

Key Notes:

- | | |
|----|--------------------------|
| 1 | TO LIGHT OR SWITCH BELOW |
| 2 | |
| 3 | 22-1/2"x32" ATTIC ACCESS |
| 4 | 5'6" SHELF @ 57" A.F.F. |
| 5 | WASHER TO LEFT OF DRYER |
| 6 | |
| 7 | |
| 8 | |
| 9 | -- |
| 10 | -- |

MECHANICAL LEGEND

○ WALL OUTLET	⊗ CLG. MOUNTED LIGHT FIXT.	+ HOSE BIB
⊗ WEATHERPROOF GFCI OUTLET	○ SURFACE MOUNT DISC LIGHT OR RECESSED CEILING LIGHT, PER SPECS.	▽ SHOWER HEAD
⊗ 220 VOLT OUTLET	○ WALL MOUNTED LIGHT FIXT.	⊗ GAS GAS HOOK UP
⊗ GFCI OUTLET	⊗ DOUBLE SPOTLIGHT FIXT.	⊗ FLOOR DRAIN
⊗ FLOOR OUTLET	⊗ DIRECTIONAL CAN LIGHT	⊗ SMOKE DETECTOR
⊗ COUNTER POP-UP OUTLET	⊗ PIN LIGHT	⊗ SMOKE DETECTOR/CO DETECTOR COMBINATION
↔ SINGLE POLE SWITCH	⊗ WALL SCONCE @ 5'-6" A.F.F.	⊗ EXHAUST FAN AND LIGHT COMBINATION
↔ 3-WAY SWITCH	▬ FLUORESCENT LIGHT	⊗ CLG. MTD. EXHAUST FAN
↔ 4-WAY SWITCH	▬ UNDER CABINET LIGHTING	⊗ DATA JACK
■ STAIR LIGHT		⊗ CABLE TELEVISION JACK
⊗ BLOCK, MOUNT, & SWITCH FOR FUTURE FAN/LIGHT COMBINATION (CENTER, UNLESS OTHERWISE NOTED)		

Space for Architect Seal

RESIDENCE FOR:
MARKET
1919 DELP COURT
WHITE OAK ESTATES

Job Number:	Drawing Date:	Coord Name:	Coord Phone:
WHOE-0003-00	2/11/25	LUKE RAMLER	859-578-421

House Name:	Drawing Scale: 1/8" = 1'0"	Contract Drawn By:
-------------	----------------------------	--------------------

the BUCHANAN

Contract Drawn By
HMA
Series:

Born on Date:	08/27/2010	CDs Drawn By:	SSP
---------------	------------	---------------	-----



Heat Information

4.02

